



66 Springbank Gardens, Lymm, WA13 9GR

£160,000





## 66 Springbank Gardens, Lymm, WA13 9GR

£160,000

This delightful ground floor apartment boasts a private front door entrance, providing a sense of exclusivity and privacy. Upon entering the apartment there is a hallway with large storage cupboard, and access to a modern bathroom, two double bedrooms and an open plan livingroom and kitchen.

One of the added benefits of this property is the parking provision having two allocated parking spaces to the rear of the building. Additionally, being close to walkways across the fields and the Trans Pennine Trail, nature lovers will appreciate the easy access to outdoor spaces for leisurely walks or cycling.

The property is conveniently located to local amenities

Don't miss out on the opportunity to make this modern apartment in Springbank Gardens your new home. Contact us today to arrange a viewing.

## Description



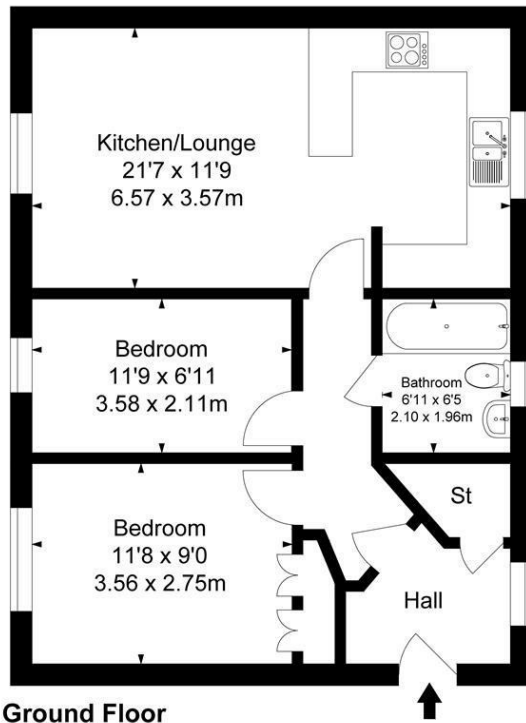
null  
Council Tax Band: C  
Available:



## Floor Plans

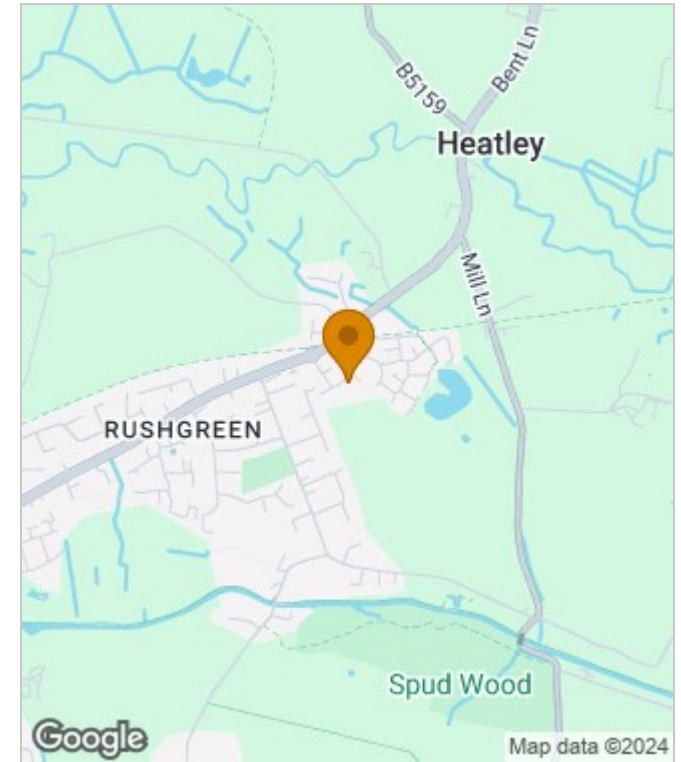
### Spring Bank Gardens, Lymm

Approximate Gross Internal Area :-  
57.35 sq m / 617 sq ft

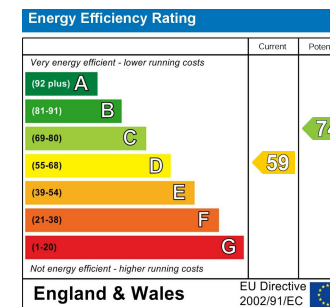


Surveyed and drawn by Lens Media for illustrative purposes only. Not to scale. Whilst every attempt was made to ensure the accuracy of the floor plan, all measurements are approximate and no responsibility is taken for any error.

## Area Map



## Energy Performance Graph



These particulars, whilst believed to be accurate are set out as a general outline only for guidance and do not constitute any part of an offer or contract. Intending purchasers should not rely on them as statements of representation of fact, but must satisfy themselves by inspection or otherwise as to their accuracy. No person in this firm's employment has the authority to make or give any representation or warranty in respect of the property.