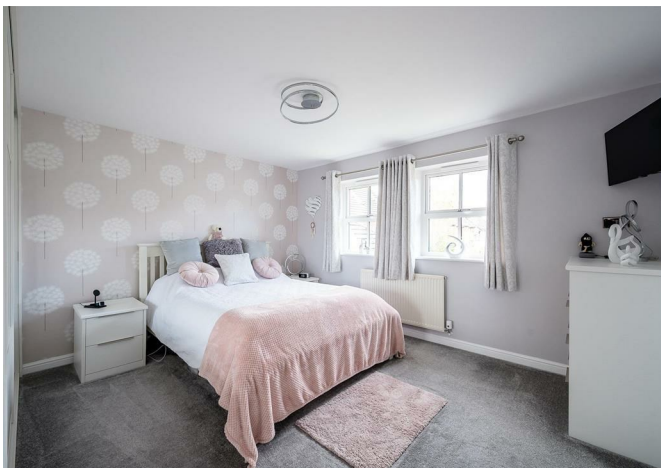




11 Masefield Drive, Winwick, Warrington, WA2 8XH

**£625,000**



11 Masefield Drive, Winwick, Warrington, WA2 8XH

£625,000

STUNNING RECENTLY DECORATED AND UPGRADED DOUBLE FRONTED DETACHED HOUSE SITUATED ON THE PERIPHERY OF THIS VERY POPULAR DEVELOPMENT. The property is approached over a sweeping double driveway leading to the detached double garage. New front door leads through to the hallway, cloakroom/wc, study to the front elevation, front to back lounge with bay window to the front and french doors to the rear. Refitted kitchen with useful utility room with floor to ceiling cupboards and dining room overlooking the rear garden. A galleried landing gives access to the master bedroom with fitted furniture and ensuite with his and her vanity unit, a further double bedroom with modern ensuite and two more double bedrooms and a refitted family bathroom. The property has views across Green Belt fields to the front and an enclosed rear garden with entertaining areas, lawn and mature borders. Excellent broadband speed ideal for working from home.

## Description

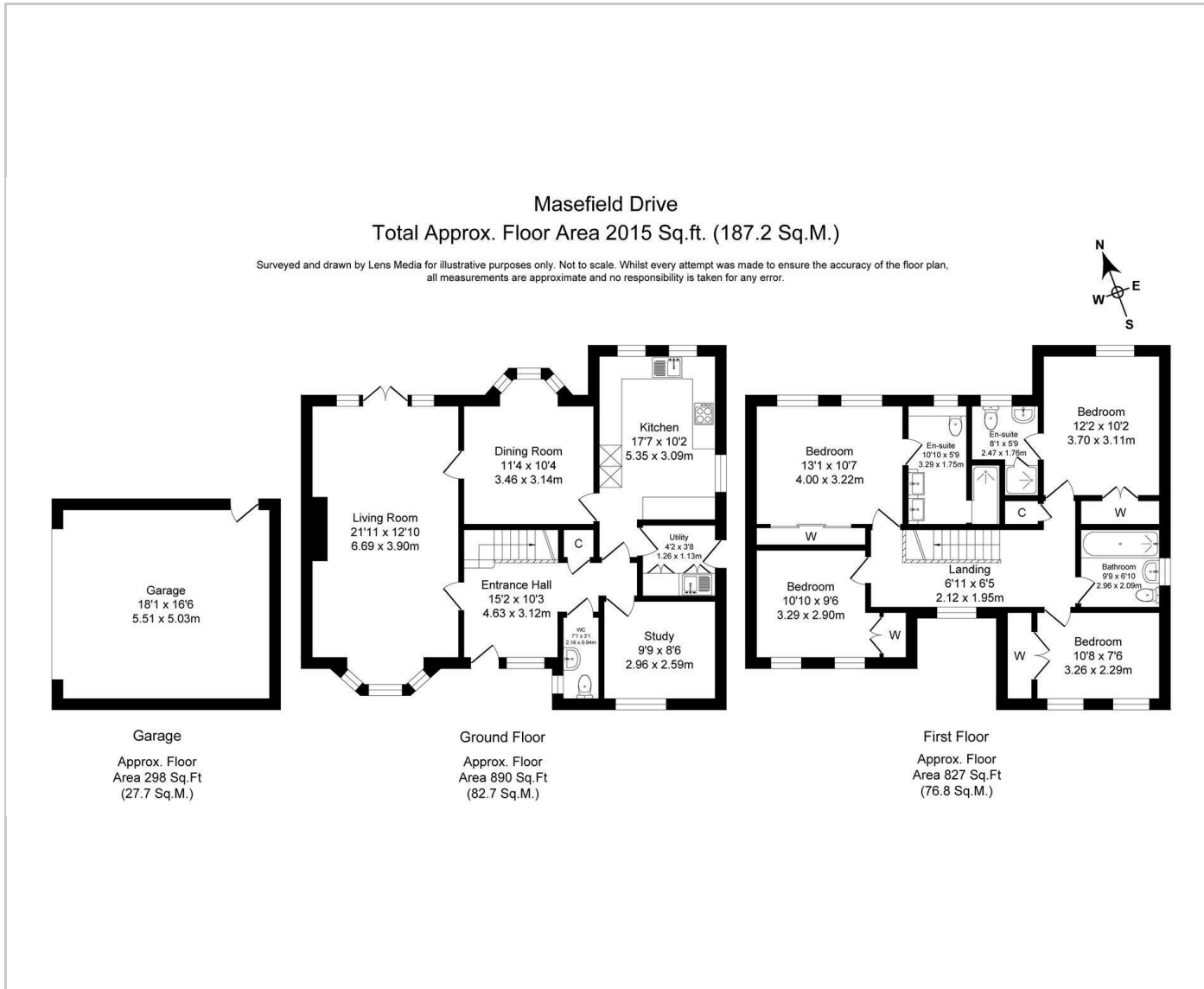


## Situation

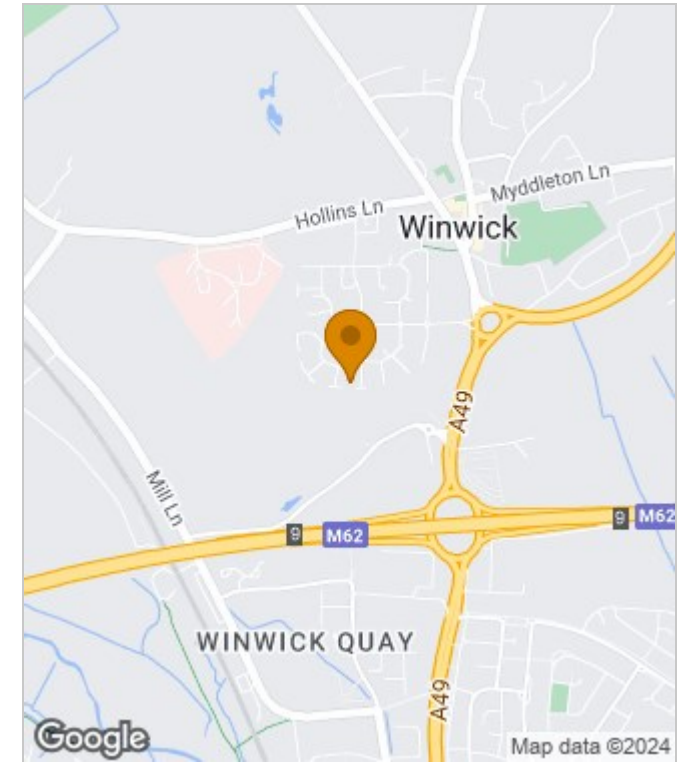
null  
Council Tax Band: F  
Available:



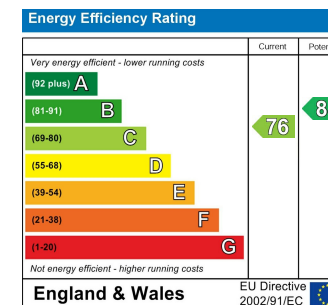
## Floor Plans



## Area Map



## Energy Performance Graph



These particulars, whilst believed to be accurate are set out as a general outline only for guidance and do not constitute any part of an offer or contract. Intending purchasers should not rely on them as statements of representation of fact, but must satisfy themselves by inspection or otherwise as to their accuracy. No person in this firm's employment has the authority to make or give any representation or warranty in respect of the property.