



34 Myddleton Lane, Winwick, Warrington, Cheshire, WA2 8NJ

£280,000



34 Myddleton Lane, Winwick, Warrington, Cheshire, WA2 8NJ

£280,000

Description



Situation



null

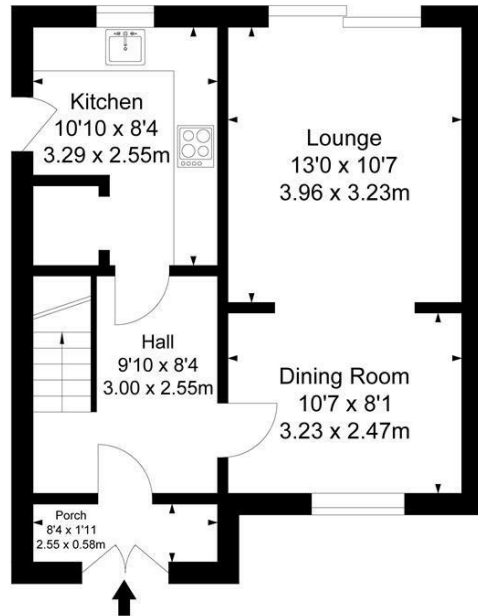
Council Tax Band: C

Available:

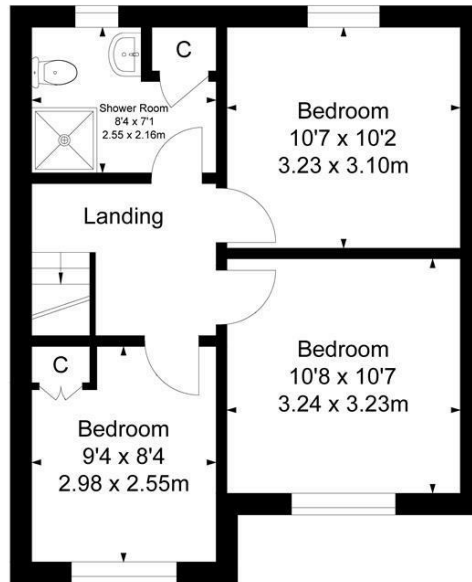
Floor Plans

Myddleton Lane

Approximate Gross Internal Area :-
 Ground Floor :- 40.61 sq m / 437 sq ft
 First Floor :- 40.61 sq m / 437 sq ft
 Total :- 81.22 sq m / 874 sq ft



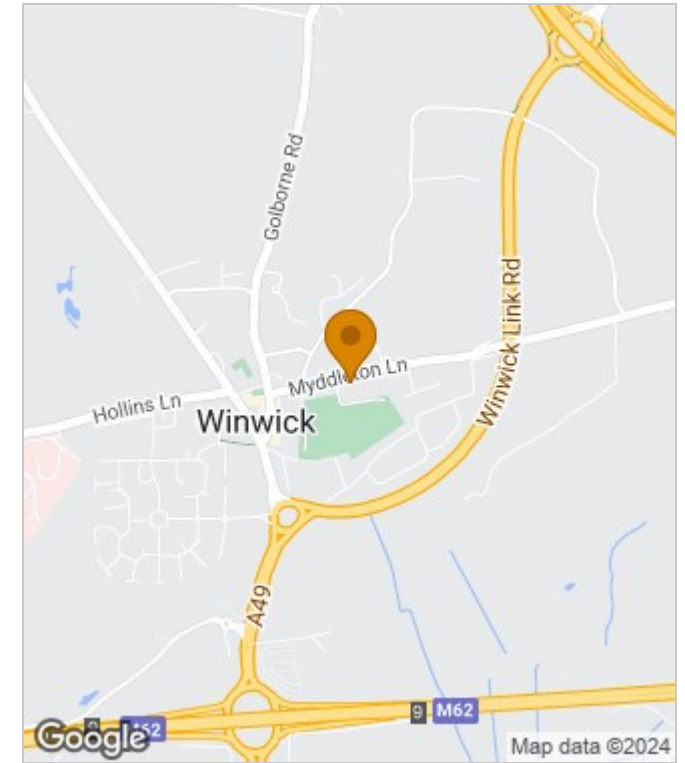
Ground Floor



First Floor

Surveyed and drawn by Lens Media for illustrative purposes only. Not to scale. Whilst every attempt was made to ensure the accuracy of the floor plan, all measurements are approximate and no responsibility is taken for any error.

Area Map



Energy Performance Graph

| Energy Efficiency Rating | | Current | Potential |
|---|--|-------------------------|-----------|
| Very energy efficient - lower running costs | | | |
| (92 plus) A | | | |
| (81-91) B | | | 85 |
| (69-80) C | | 71 | |
| (55-68) D | | | |
| (39-54) E | | | |
| (21-38) F | | | |
| (1-20) G | | | |
| Not energy efficient - higher running costs | | | |
| England & Wales | | EU Directive 2002/91/EC | |

These particulars, whilst believed to be accurate are set out as a general outline only for guidance and do not constitute any part of an offer or contract. Intending purchasers should not rely on them as statements of representation of fact, but must satisfy themselves by inspection or otherwise as to their accuracy. No person in this firm's employment has the authority to make or give any representation or warranty in respect of the property.