



26 Oulton Court, Grappenhall, Warrington, Cheshire, WA4 2NT

£75,000



26 Oulton Court, Grappenhall, Warrington, Cheshire, WA4 2NT

£75,000

This is a lovely example of a cozy retirement apartment in this popular development. There are fabulous communal gardens with sitting areas, communal reception areas with separate kitchen, wc and laundry rooms. This particular apartment is situated on the first floor

Description



null

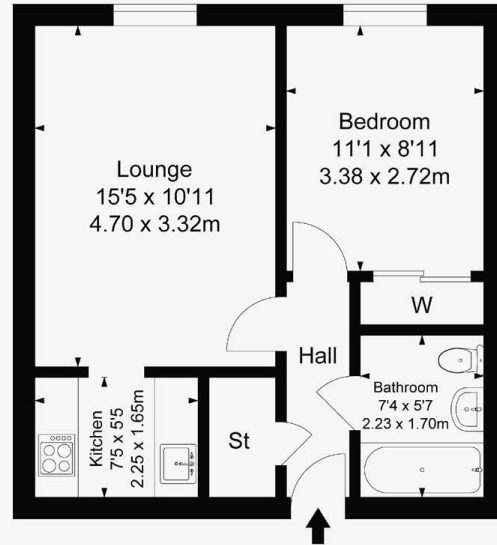
Council Tax Band: B

Available:

Floor Plans

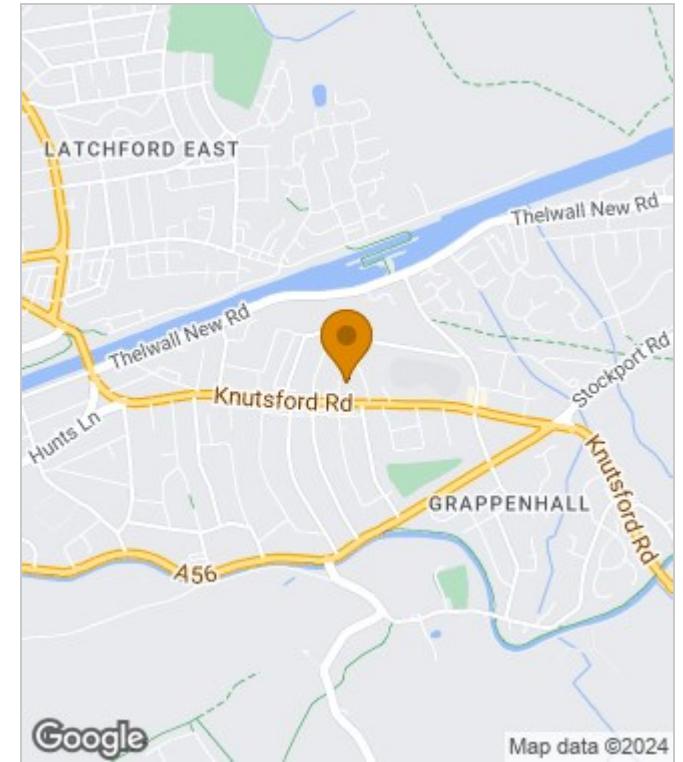
Oulton Court

Approximate Gross Internal Area :-
40.23 sq m / 433 sq ft



Surveyed and drawn by Lens Media for illustrative purposes only. Not to scale. Whilst every attempt was made to ensure the accuracy of the floor plan, all measurements are approximate and no responsibility is taken for any error.

Area Map



Energy Performance Graph

Energy Efficiency Rating		Current	Potential
Very energy efficient - lower running costs			
(92 plus) A			
(81-91) B			
(69-80) C			
(55-68) D			
(39-54) E			
(21-38) F			
(1-20) G			
Not energy efficient - higher running costs			
England & Wales	EU Directive 2002/91/EC		

These particulars, whilst believed to be accurate are set out as a general outline only for guidance and do not constitute any part of an offer or contract. Intending purchasers should not rely on them as statements of representation of fact, but must satisfy themselves by inspection or otherwise as to their accuracy. No person in this firm's employment has the authority to make or give any representation or warranty in respect of the property.