

Mileway

Mayne House, Juniper Park, Fenton Way, Basildon, SS15 6RZ

BASILDON

Juniper Park

Refurbished & flexible office space from
1,000 sq ft to 16,725 sq ft

Available to let

Logistics real estate urbanised

[mileway.com](https://www.mileway.com)

Juniper Park



Available To Let
 Refurbished & flexible office space
 1,000 sq ft to 16,725 sq ft

This headquarters style building is undergoing comprehensive refurbishment to deliver high-quality, modern offices in a popular business location close to the M25 and Laindon station.

Each occupier will benefit from high-specification space designed for a comfortable and efficient working environment with air conditioning, 24-hour security and generous parking.

*data collated from West London Alliance

- Basildon is the largest economy in Essex and a significant driver of regional and national growth.
- The borough is home to 7,725 thriving businesses, particularly in the Digital, Creative and ICT sectors.
- 17.5% of employment is in administrative occupations, which is 7.5% higher than the national average.

- 24/ security
- Lift access
- Revamped reception

- Open-plan offices
- Wi-fi
- Suspended ceilings

- Comfort cooling
- On-site parking

Accommodation

Juniper Park comprises a five storey HQ office building on a secure site benefiting from 24/7 manned security. The communal reception, entrance and vacant offices are currently being refurbished. High-quality offices capable of subdivision are available on the ground, second and fourth floors.

Floor	Sq Ft	Sq M
Ground Floor	16,725	1,553.75
Second Floor	4,1475	385.26
Fourth Floor	4,096	380.52
Total	24,968	2,319.53

Approximate net internal areas. A measured survey will be provided on completion of landlords works.

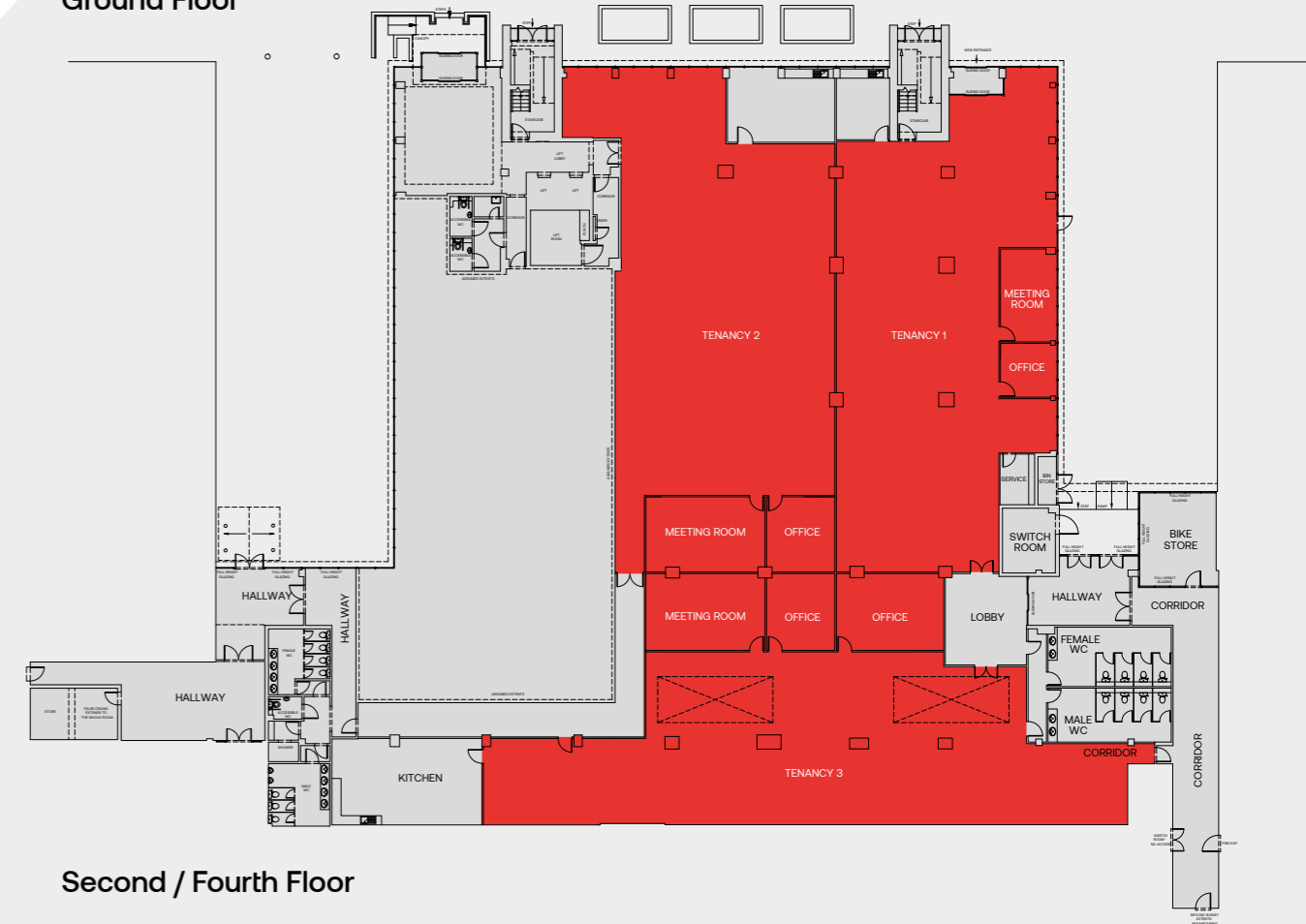
Key Features

- Natural light
- Male & female WCs
- Secure storage
- Two ten-person passenger lifts
- 4 pipe fan coil air condition system
- Double glazing
- Suspended ceilings/LED lighting
- 24 hour manned estate security

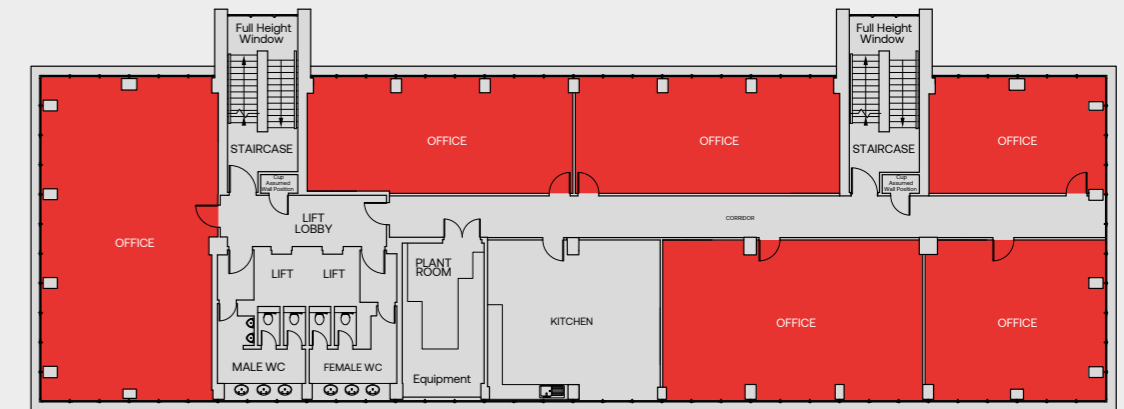
Target Ratings

- BREEAM 'xx'
- Energy Performance Certificate available on request

Ground Floor



Second / Fourth Floor



*indicative floorplan

Juniper Park

Mayne House, Juniper Park, Fenton Way, Basildon, SS15 6RZ

Terms

The offices are available to let on new effective Full Repairing and Insuring leases for terms to be agreed.

Viewing / Further Information



Jim O'Connell
M +44 (0) 7768 070 248
j.oconnell@glenny.co.uk

Dan Wink
M +44 (0) 7717 545 532
d.wink@glenny.co.uk



Mike Storrs
T +44 (0) 1245 293 228
mstorrs@savills.com

Mileway

Location

Your new space will ease your commute with on-site parking and exceptional transport links connecting you to the South East, Central London and beyond.

Juniper Park is situated at the entrance of Juniper Park on Southfields Business Park, an established and popular location where you will be in good company. Local occupiers include DB Schenker, Bosch, Ford Dunton Research Centre and DG International.

By Rail

Laindon Station offers regular and direct services in and out of central London with a journey time to London Fenchurch Street of approximately 30 minutes. 1.1 miles from Juniper Park 22 minute walk

By Road

The A127 is within a mile to the north and connects with the A12 and the M25 (Junction 29) for easy access to central London and the national motorway network. A127 1 mile from Juniper Park 3 minute drive

By Bus

There are two bus stops within a one minute walk.

By Air

London Stansted, one of the UK's busiest airports with over 140 direct flights. 28 miles from Juniper Park 28 minute drive



The Agents for themselves and for the vendors or lessors of the property whose agents they give notice that, (i) these particulars are given without responsibility of The Agents or the vendors or lessors as a general outline only, for the guidance of prospective purchasers or tenants, and do not constitute the whole or any part of an offer or contract; (ii) The Agents cannot guarantee the accuracy of any description, dimension, references to condition, necessary permissions for use and occupation and other details contained therein and any prospective purchasers or tenants should not rely on them as statements or representations of fact but must satisfy themselves by inspection or otherwise as to the accuracy of each of them; (iii) no employee of The Agents has any authority to make or give any representation or enter into any contract whatsoever in relation to the property; (iv) VAT may be payable on the purchase price and / or rent, all figures are exclusive of VAT, intending purchasers or lessees must satisfy themselves as to the applicable VAT position, if necessary by taking appropriate professional advice; (v) The Agents will not be liable, in negligence or otherwise for any loss arising from the use of these particulars. July 2021. Cormack - cormackadvertising.com