



Besant Close, Blackburn, BB1 2RG

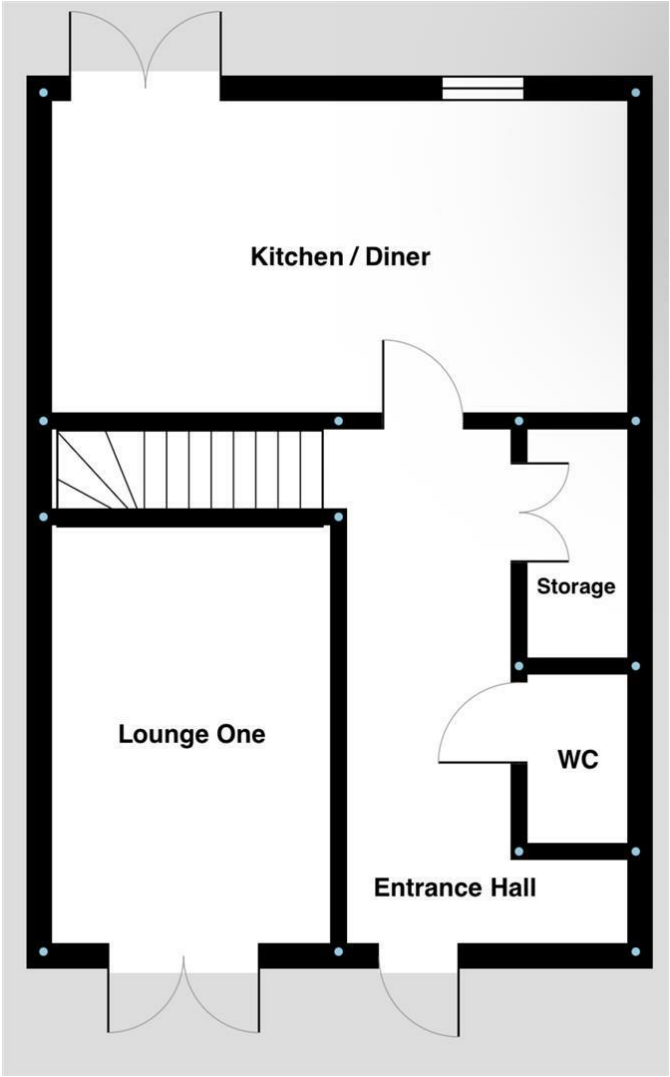
£1,000 Per month

Duffin's Estate Agents are pleased to offer for rent this modern 4 or 5 bed town house, situated opposite the Royal Blackburn Hospital on a quiet cul-de-sac. The property briefly comprises of entrance hallway, lounge with feature fire and patio doors on the front driveway, dining room and kitchen along with patio doors to the rear garden. The kitchen is fitted with an oven, hob, extractor, fridge/freezer and dishwasher. The ground floor also benefits from a separate WC and ample storage cupboards. To the first floor there is a large room which can be used as a second lounge or bedroom and a second bedroom with fitted wardrobes and ensuite. The third floor benefits from a further three bedrooms and a family three piece bathroom. Externally the property benefits from a paved garden, which is easy to maintain as well as a driveway for the parking of 2/3 cars.

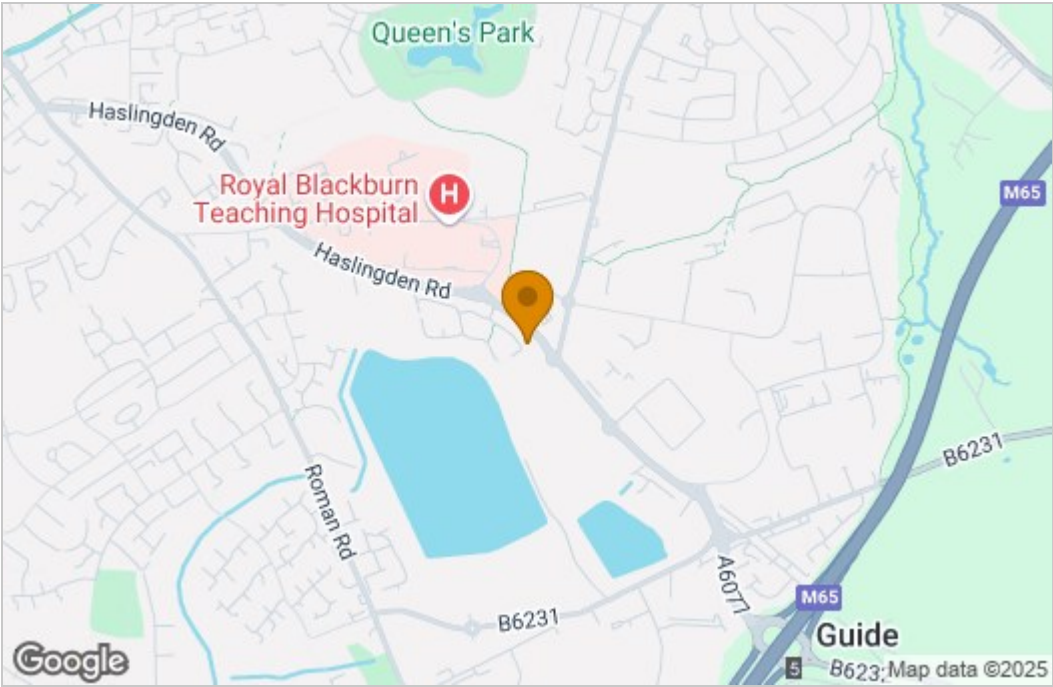
The property is gas central heated and double glazed throughout.

This property is ideal for anyone working at the hospital as it is a stones throw away and is close to all major motorway links. Call now to arrange a viewing: 01254 691352

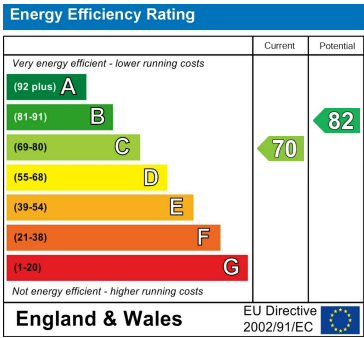
Floor Plan



Area Map



Energy Efficiency Graph



These particulars, whilst believed to be accurate are set out as a general outline only for guidance and do not constitute any part of an offer or contract. Intending purchasers should not rely on them as statements of representation of fact, but must satisfy themselves by inspection or otherwise as to their accuracy. No person in this firms employment has the authority to make or give any representation or warranty in respect of the property.