



Hollins Grove Street, Darwen, BB3 1HG

Offers over £69,950

****INVESTMENT INVESTMENT INVESTMENT****

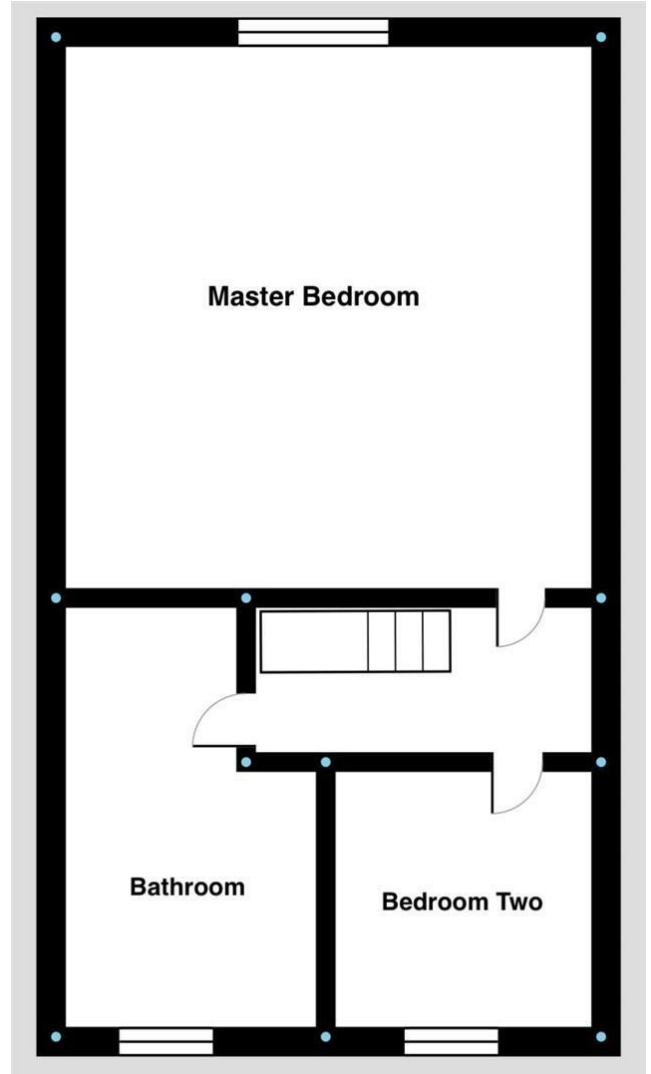
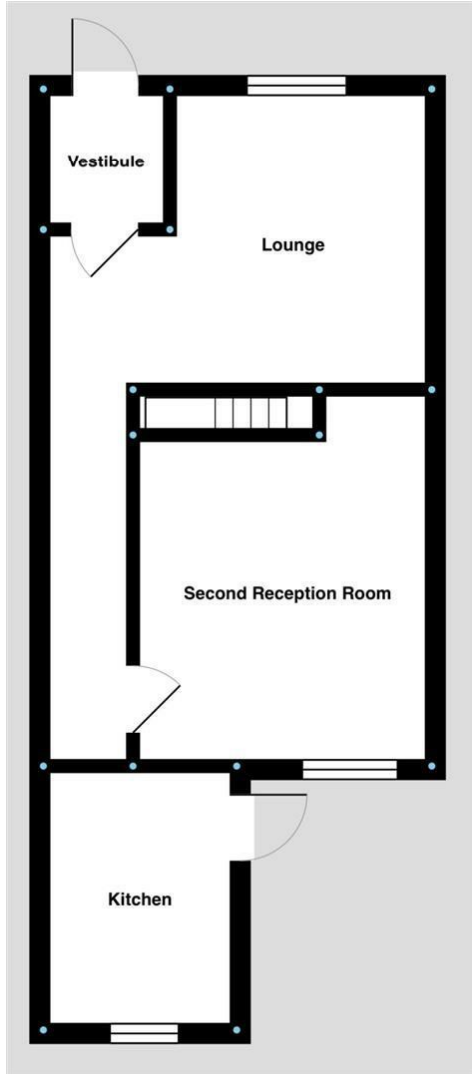
This mid-terrace house, built in 1900, boasts 775 sq ft of living space, making it an ideal property investment opportunity for those looking for a renovation project.

With 2 reception rooms and 2 bedrooms, this property offers ample space for comfortable living. Although it requires refurbishment, this presents a fantastic opportunity for an investment project.

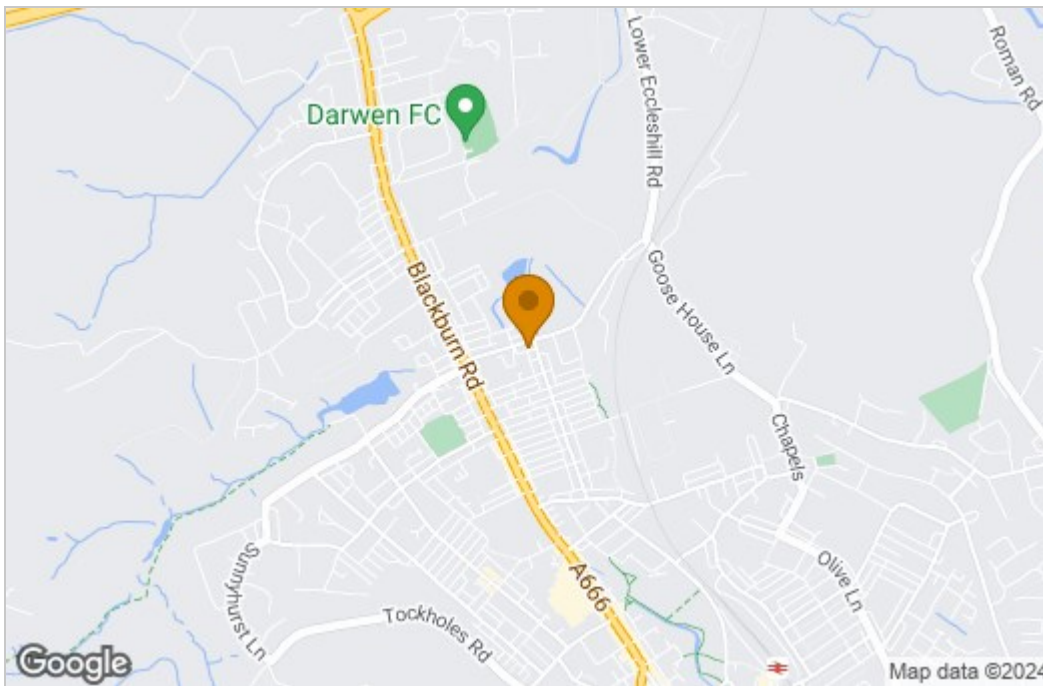
Offered with vacant possession and no chain, this property is situated in a good catchment area for local schools, Blackburn & Darwen Town Centre as well as being close to the M65 motorway.

Lounge 4.31 x 3.98 (14'1" x 13'0")
Dining Room 3 x 2.97 (9'10" x 9'8")
Kitchen 2.76 x 1.73 (6'6", 249'4" x 5'8")
Master Bedroom 4.31 x 4 (14'1" x 13'1")

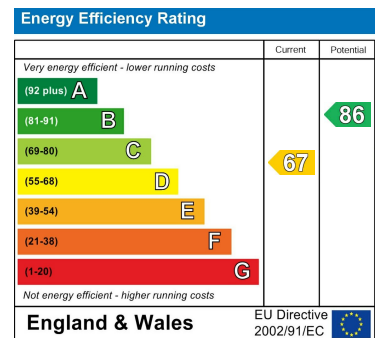
Floor Plan



Area Map



Energy Efficiency Graph



These particulars, whilst believed to be accurate are set out as a general outline only for guidance and do not constitute any part of an offer or contract. Intending purchasers should not rely on them as statements of representation of fact, but must satisfy themselves by inspection or otherwise as to their accuracy. No person in this firm's employment has the authority to make or give any representation or warranty in respect of the property.

334 Bolton Road, Blackburn, Lancashire, BB2 4HY

Tel: 01254 691352 Email: enquiries@duffinsestateagents.co.uk <https://www.duffinsestateagents.co.uk/>