

PERIOD HOMES

By Simon Miller



Church Walk

East Malling, West Malling ME19 6AG

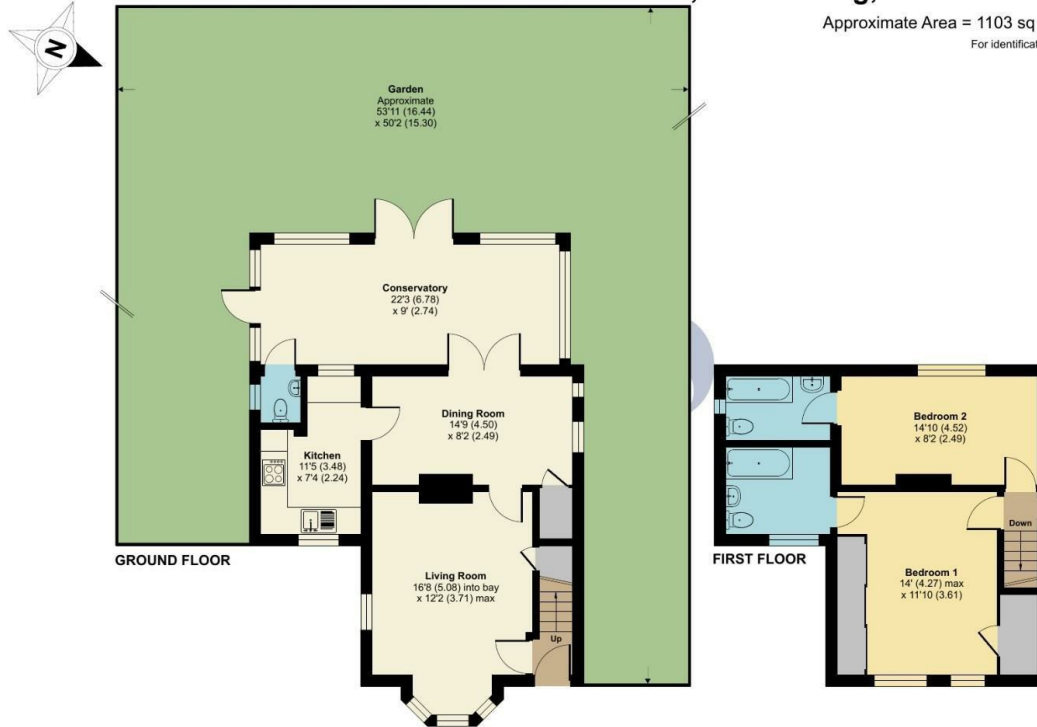
- GUIDE PRICE: £500,000-£525,000
- Cul-de-sac Location Opposite a Church
- Does Require Some Updating and Modernising
- An Attractive Former Old Vicarage Cottage
- Two Bedrooms with 2 Two En-suites
- Vacant Possession

Guide Price £500,000 Freehold

Local Authority
Council Tax Band E
EPC Rating E

Church Walk, East Malling, West Malling, ME19

Approximate Area = 1103 sq ft / 102.4 sq m
For identification only - Not to scale



 Floor plan produced in accordance with RICS Property Measurement Standards incorporating International Property Measurement Standards (IPMS2 Residential). © nichecom 2024. Produced for Simon Miller & Company. REF: 1093428



Period Homes by Simon Miller Office
Weald, 5 High Street, Headcorn, Ashford,
Kent, TN27 9NH

Contact
01622 850888
admin@periodhomesbysimonmiller.co.uk
<https://simonmiller.co.uk/period-homes/>

Agents Note: Whilst every care has been taken to prepare these particulars, they are for guidance purposes only. All measurements are approximate and for general guidance purposes only and whilst every care has been taken to ensure accuracy, they should not be relied upon and potential buyers/tenants are advised to recheck the measurements.