

PERIOD HOMES

By Simon Miller



Chapel Street

Ryarsh, West Malling ME19 5LW

- Amazing PERIOD HOME
- Immaculate Presentation Throughout
- Quiet Village Close To West Malling
- GUIDE PRICE: £450,000-£475,000
- <https://www.rpclandandnewhomes.co.uk/land-for-sale/pastureland-and-woodland-at-chapel-street-ryarsh>
- Two Bedrooms Plus Loft Room
- Lounge with Inglenook Fireplace
- Off Road Parking bay to Front
- LAND FOR SALE TO THE REAR OF THE PROPERTY

Price Guide £450,000 Freehold

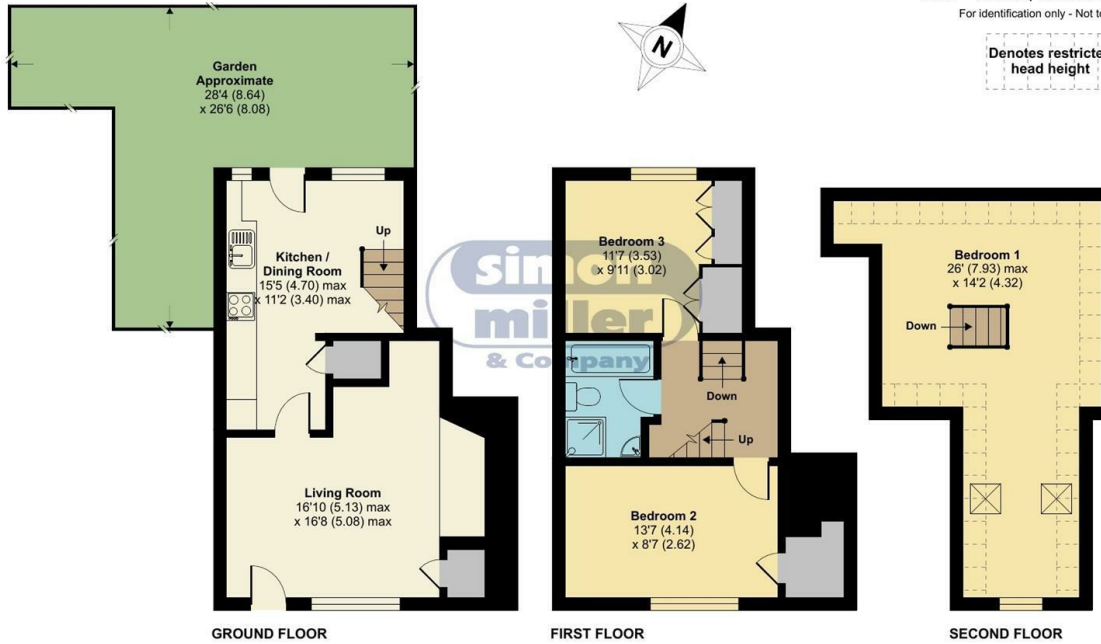


Local Authority Tonbridge and
Malling Borough Council
Council Tax Band C
EPC Rating

Chapel Street, Ryarsh, West Malling, ME1

Approximate Area = 978 sq ft / 90.9 sq m
Limited Use Area(s) = 95 sq ft / 8.8 sq m
Total = 1073 sq ft / 99.7 sq m
For identification only - Not to scale

Denotes restricted
head height



RICS Certified Property Measurer Floor plan produced in accordance with RICS Property Measurement Standards incorporating International Property Measurement Standards (IPMS2 Residential). © nichecom 2022. Produced for Simon Miller & Company. REF: 930808



Period Homes by Simon Miller Office
Weald, 5 High Street, Headcorn, Ashford,
Kent, TN27 9NH

Contact
01622 850888
admin@periodhomesbysimonmiller.co.uk
<https://simonmiller.co.uk/period-homes/>

Agents Note: Whilst every care has been taken to prepare these particulars, they are for guidance purposes only. All measurements are approximate and for general guidance purposes only and whilst every care has been taken to ensure accuracy, they should not be relied upon and potential buyers/tenants are advised to recheck the measurements.