

PERIOD HOMES

By Simon Miller



Lower Road

East Farleigh, Maidstone ME15 0JL

- Stunning Detached Building With Planning Permission
- Beautiful Elevated Position Adjacent Church and Overlooking The River Medway
- Currently A Venue For Hire With First-Fixed Residential Conversion Over
- Available With Large Parking Area To Front

Offers In Excess Of £750,000 Freehold

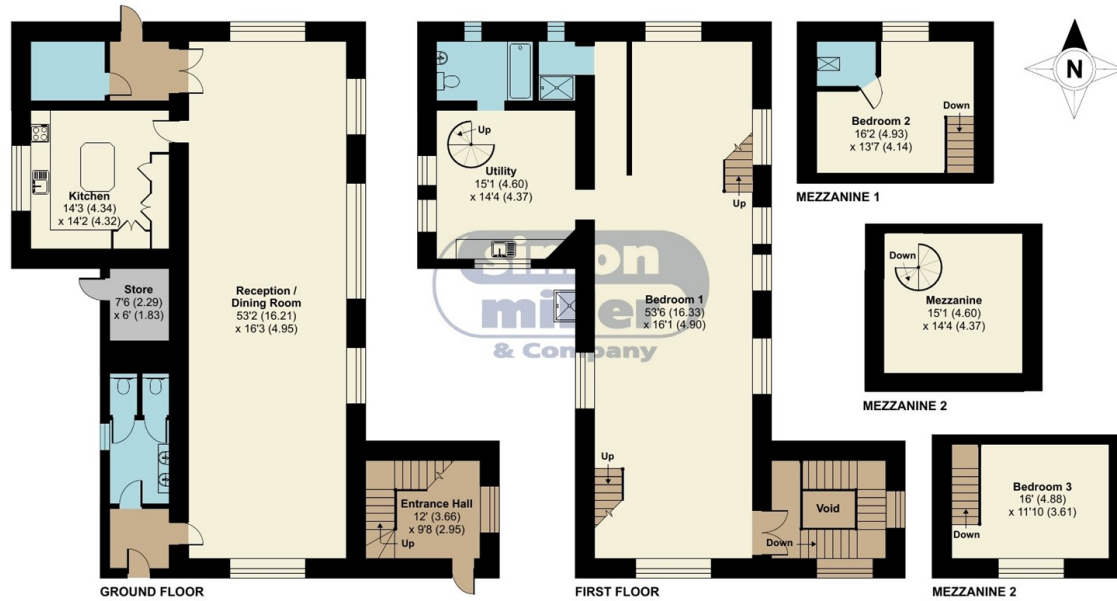


Local Authority Maidstone
Borough Council
Council Tax Band C
EPC Rating

Old School Hall, Lower Road, East Farleigh, Maidstone, ME15

Approximate Area = 3306 sq ft / 307.1 sq m (includes store / void)

For identification only - Not to scale



 Floor plan produced in accordance with RICS Property Measurement Standards incorporating International Property Measurement Standards (IPMS2 Residential). © nrichecom 2022. Produced for Simon Miller & Company. REF: 892089

Period Homes by Simon Miller Office
Weald, 5 High Street, Headcorn, Ashford,
Kent, TN27 9NH

Contact

01622 850888
admin@periodhomesbysimonmiller.co.uk
<https://simonmiller.co.uk/period-homes/>

Agents Note: Whilst every care has been taken to prepare these particulars, they are for guidance purposes only. All measurements are approximate and for general guidance purposes only and whilst every care has been taken to ensure accuracy, they should not be relied upon and potential buyers/tenants are advised to recheck the measurements.

