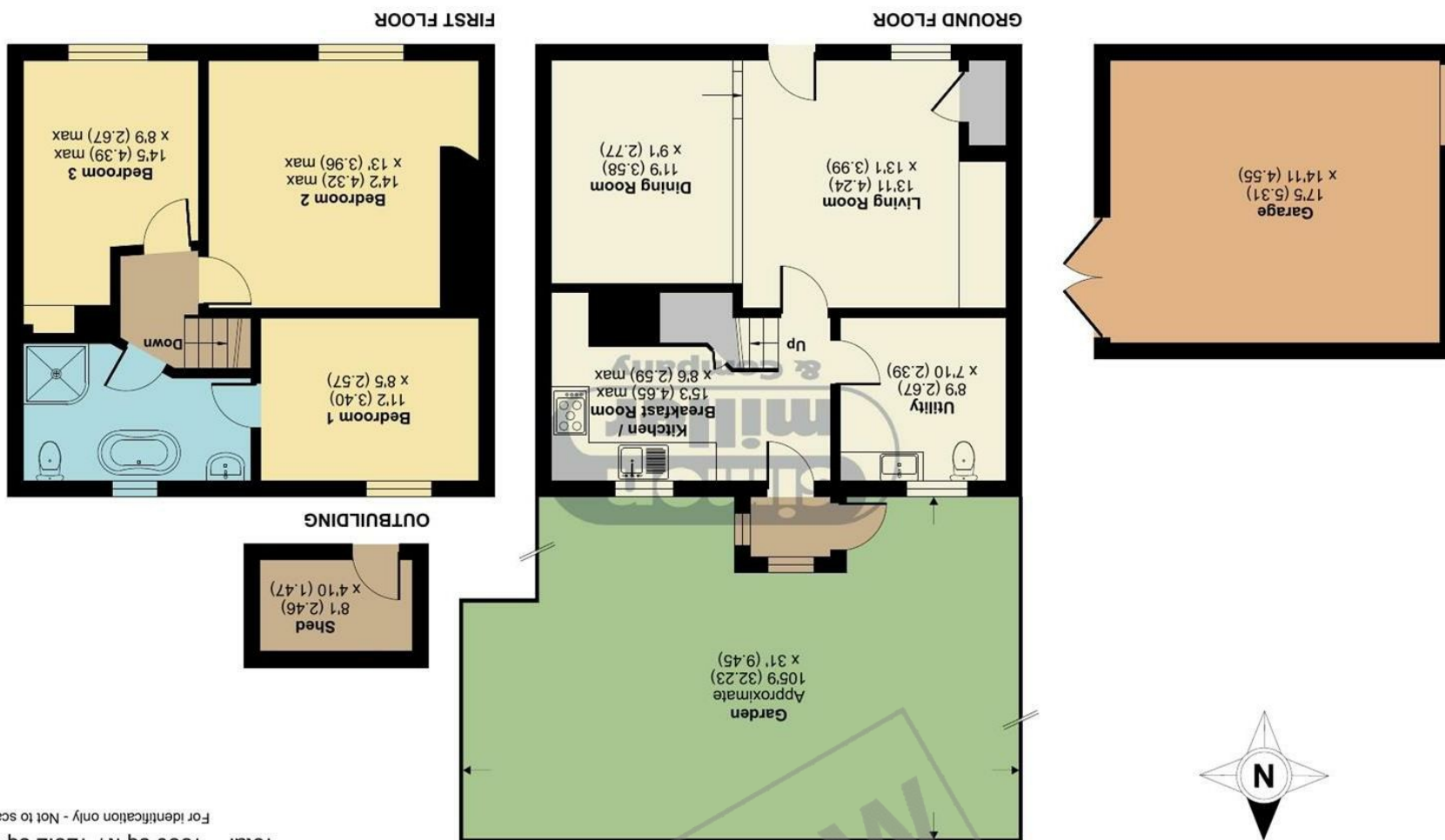


Floor plan produced in accordance with RICS Property Measurement Standards incorporating International Property Measurement Standards (IPMS2 Residential). © ndhcom 2022. Produced for Simon Miller & Company. REF: 912890



Approximate Area = 1341 sq ft / 124.6 sq m (includes garage)  
 Outbuilding = 39 sq ft / 3.6 sq m  
 Total = 1380 sq ft / 128.2 sq m  
 For identification only - Not to scale

PREVIEW

Hollingbourne, Kent, ME17

Guide Price £425,000  
 EPC RATING:

Eyhorne Street, Maidstone, ME17 1TR







PREVIEW

GUIDE PRICE £425,000 - £440,000

Grade II Listed Home, Offered Chain Free Which Offers A Wealth Of Character In This Historic Village And Benefits From Large Rear Garden And Garage To The Rear...

### MATERIAL INFORMATION

Freehold  
Council Tax Band D  
EPC Report



• GUIDE PRICE £425,000 - £440,000 • Grade II Listed Home • Renovated Throughout In 2016 • Two/Three Bedrooms • Unique Character Building • Four Piece Bathroom Suite • Large Lawned Garden • Garage Space To Rear • Popular Village Location • Offered Chain Free

Agents Note: All dimensions are approximate and quoted for guidance only. Reference to appliances, fixtures, fittings and services does not imply that they are necessarily in good condition, fit the purpose or are in working order. Interested parties are advised to obtain verification from their Solicitors as to the Freehold/Leasehold status of the property and confirmation regarding the condition of any fixtures and fittings included in the sale.

5, HIGH STREET, ASHFORD, KENT, TN27 9NH | 01622 850888 | ADMIN@PERIODHOMESBYSIMONMILLER.CO.UK