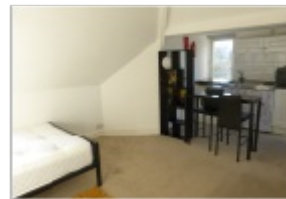
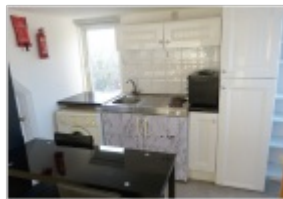


To Let Studio flat



- › +£100 per month for the council tax
- › Double glazing
- › Gas central heating
- › 2 minutes walk to Golders Green Station
- › Available 09/07/24

Large studio flat located on the second floor of this period property. The flat benefits from a kitchenette, double glazing, gas central heating and is located 3 minutes walk to Golders Green Station. Available now.





Large studio flat located on the second floor of this period property. +£100 per month for the council tax.

The flat benefits from a kitchen, double glazing, gas central heating, tiled bathroom and is located 2 minutes walk to Golders Green Station.

Available now.



34 Golders Green Road, London NW11 8LL

murray@dreamviewestates.co.uk

020 8455 0055

best
agent