

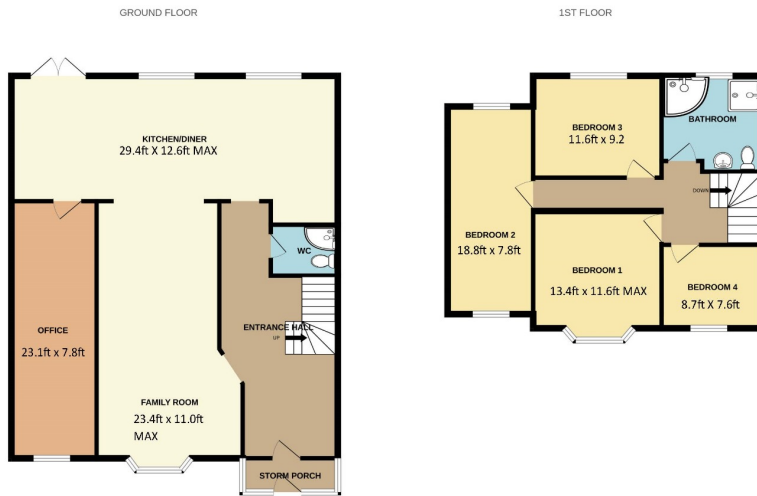
For Sale 4 bed flat



Dreamview Estates are proud to present this exceptional 4-bedroom link detached property in the heart of Hendon, London. Located on Elms Avenue, this spacious family home offers a perfect blend of comfort, convenience, and modern living. A fantastic location close to the Hendon Central Underground Tube Station, Brent Cross Shopping Centre, and the







Whilst every attempt has been made to ensure the accuracy of the description contained herein, measurements of doors, windows, rooms and any other items are approximate and no responsibility is taken for any error, omission or mis-statement. This plan is for illustrative purposes only and should be used as such for any prospective purchase. The services, systems and appliances shown have not been tested and no guarantee as to their operability or efficiency can be given.  
Made with Hologix. ©2022

---

ELMS AVENUE, HENDON, NW4 2PL

\*Dreamview Estates are proud to present this exceptional 4-bedroom link detached property in the heart of Hendon, London. Located on Elms Avenue, this spacious family home offers a perfect blend of comfort, convenience, and modern living. A fantastic location close to the Hendon Central Underground Tube Station, Brent Cross Shopping Centre, and the serene Hendon Park, this property is sure to meet your every need.

\*This property consists of a welcoming entrance hall leading to the large living area, downstairs WC with corner shower, family living area opening out to the kitchen/dining area and a converted garage currently being used as a home office with potential to be a fifth bedroom. The first floor consists of a large landing area leading to four bedrooms and a four-piece family bathroom.

\*This well-designed property provides generous living spaces with four bedrooms, making it an ideal family home. The open-plan layout creates an inviting atmosphere for relaxation and entertainment, with ample natural light throughout the house.

\*The family living area offers an immense amount of space, ideal for entertaining large groups, it also has the benefit of underfloor heating.

\*The converted garage is versatile space that can be used as an additional bedroom, home office, or playroom, catering to your unique lifestyle needs. The contemporary kitchen is equipped with premium appliances, sleek countertops, and ample storage, an ideal space for entertaining and casual dining.

\*The property's location is one of its standout features. It is conveniently situated close to Hendon Central Underground Tube Station, providing easy access to central London. The Brent Cross Shopping Centre is just a short distance away, offering a variety of shopping and dining options. Hendon Park, with its lush green spaces, is within walking distance, providing an ideal place for outdoor recreation. It is also a short distance away from Hasmonean Primary School, Hendon School and Independent Jewish Day School.



34 Golders Green Road, London NW11 8LL

[murray@dreamviewestates.co.uk](mailto:murray@dreamviewestates.co.uk)

020 8455 0055

best  
agent

\*This delightful 4-bedroom link detached property in Elms Avenue presents an opportunity to enjoy comfortable and convenient living in a highly sought-after location. Don't miss the chance to make this beautiful house your new home. The property has been a family home for over 30 years and still has a massive amount of potential to put your own stamp on it.

VIEWING STRICTLY BY APPOINTMENT

PLEASE CALL 020 8455 0055

PRICE £1250000 FREEHOLD

COUNCIL TAX BAND F

EPC BAND D



34 Golders Green Road, London NW11 8LL

[murray@dreamviewstates.co.uk](mailto:murray@dreamviewstates.co.uk)

020 8455 0055

best  
agent