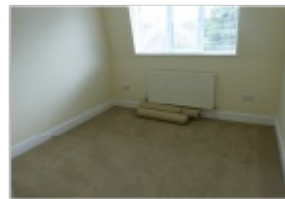


To Let 2 bed flat



- › TWO DOUBLE BEDROOM
- › TWO BATHROOMS (1 EN\_SUITE)
- › SEPARATE KITCHEN
- › DOUBLE GLAZED WINDOWS
- › GAS CENTRAL HEATING

TWO BEDROOM FLAT TO LET IN GOLDERS GREEN.





---

WENTWORTH ROAD, GOLDERS GREEN, NW11 0RT

\*REFURBISHED TWO BEDROOM TWO BATHROOM FLAT TO LET IN GOLDERS GREEN.  
800 SQ FT/75 SQ MT

\*THE FLAT BENEFITS FROM TWO DOUBLE BEDROOMS, LIVING ROOM, SEPARATE  
KITCHEN, TWO BATHROOMS (1 EN-SUITE), DOUBLE GLAZED WINDOWS, GAS CENTRAL  
HEATING AND SHARED GARDEN.

\*THE FLAT IS LOCATED ONLY ABOUT 8 MINUTES WALK TO GOLDERS GREEN STATION.

AVAILABLE 06/08/24

EPC BAND C



34 Golders Green Road, London NW11 8LL

murray@dreamviewstates.co.uk

020 8455 0055

best  
agent