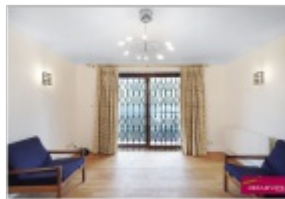


For Sale 2 bed flat



- › 2 BEDROOM GROUND FLOOR APARTMENT
- › SMALL PURPOSE BUILT BLOCK
- › LOUNGE WITH BALCONY
- › 2 BATHROOMS
- › GATED PARKING

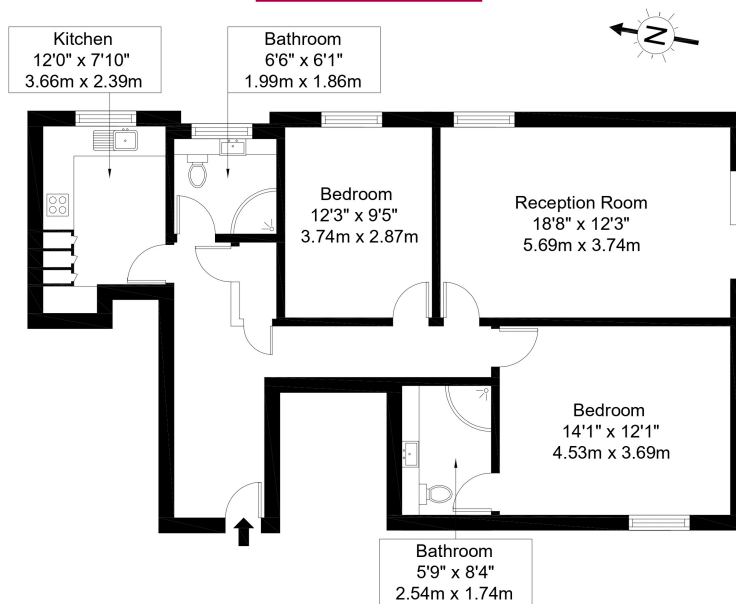
A bright and spacious 2 bedroom 2 bathroom ground floor apartment located in this small, modern purpose built block in The Woodlands.





# Canterbury Court, NW11 9QT

Approx Gross Internal Area = 83.82 sq m / 902 sq ft



Ground Floor

Ref

Copyright

**BLEU  
PLAN**

The Floor plan is not to scale and measurements and areas shown are approximate and therefore should be used for illustrative purposes only. The plan has been prepared in accordance with the RICS code of Measuring Practice and whilst we have confidence in the information produced it must not be relied on. If there is any aspect of particular importance, you should carry out or commission your own inspection of the property.  
Copyright @ BLEUPLAN



34 Golders Green Road, London NW11 8LL

murray@dreamviewestates.co.uk

020 8455 0055



---

CANTERBURY COURT, WOODLANDS, NW11 9QT

Key features

- 2 Bedrooms
- 2 Bathrooms
- Balcony off living room
- Parking
- Ground Floor
- Low Outgoings
- Council Tax Band F
- EPC Rating: C

Aspacious 2 bedroom 2 bathroom ground floor apartment located in this small, modern purpose built block in The Woodlands.

The flat has been generally well maintained and has the benefit of a 19' living room with balcony.

There is a separate fitted kitchen and a large principal bedroom with en suite shower room

In addition to the master bedroom there is a second bedroom.

There is a second bathroom also doubles up as guest WC.

Canterbury Court is the most recent block to be built in the Woodlands, after Dolphin Court and James Close. It has the benefit of a share of the freehold, low outgoings (the block is self managed) and has parking within the internal courtyard area, which is accessed by automatic security gates.

This is a reasonable priced flat in a highly desirable location with a significant number of benefits.



34 Golders Green Road, London NW11 8LL

murray@dreamviewstates.co.uk

020 8455 0055

best  
agent

Viewing is strongly recommended.

Price: £650,000

Tenure: Share of Freehold

Service Charge - £2300 pa TBC + CONTRIBUTION TO SINKING FUND £600PA

VIEWING BY APPOINTMENT THROUGH OWNERS AGENTS DREAMVIEW ESTATES



34 Golders Green Road, London NW11 8LL

[murray@dreamviewestates.co.uk](mailto:murray@dreamviewestates.co.uk)

020 8455 0055

best  
agent