

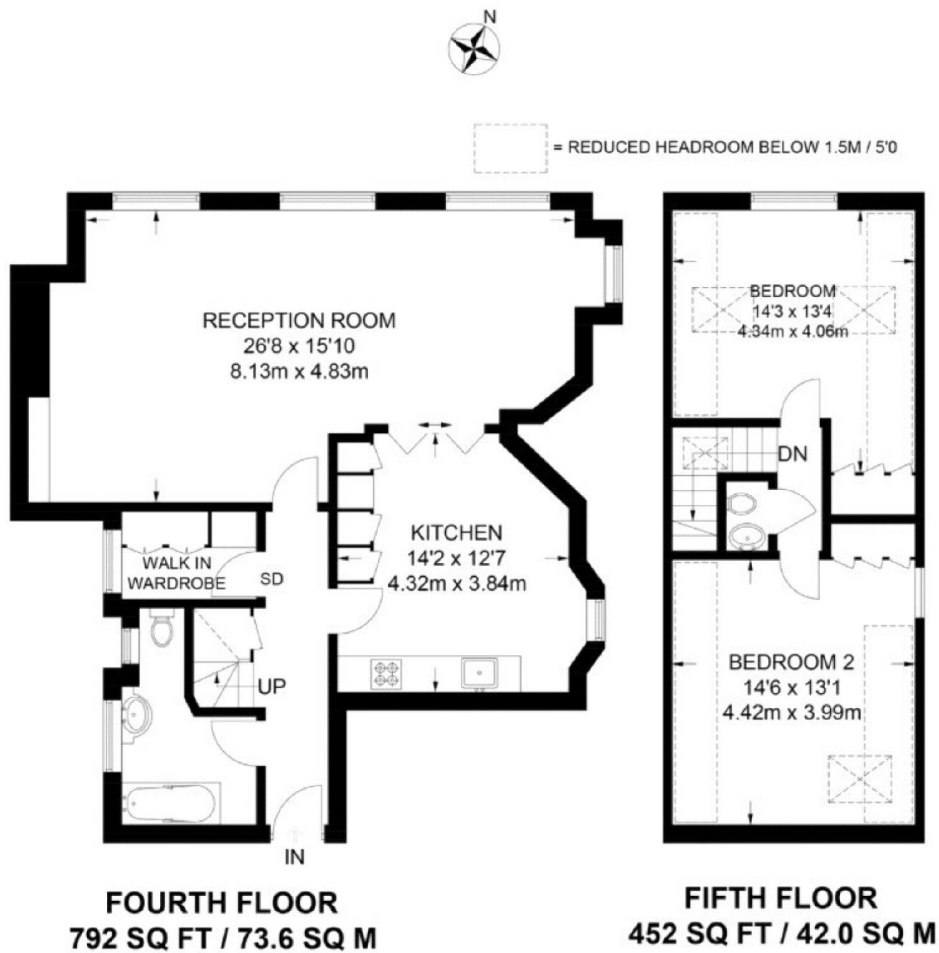


Old Brompton Road, SW5

£1,200,000



- Premium Location
- Top Floor With Lift
- Flooded With Natural Light
- Split-Level Layout
- High Ceilings
- Wooden Floors



APPROXIMATE GROSS INTERNAL AREA
1244 SQ FT / 115.6 SQ M

This plan has been drawn for illustrative and identification purposes only.

Marsh & Parsons Earls Court

246 Old Brompton Road,
Earls Court, London, SW5
020 7590 0800

We aim to make our particulars both accurate and reliable. However, they are not guaranteed; nor do they form part of an offer or contract. If you require clarification on any points then please contact us, especially if you're traveling some distance to view. Please note that appliances and heating systems have not been tested and therefore no warranties can be given as to their good working order.