

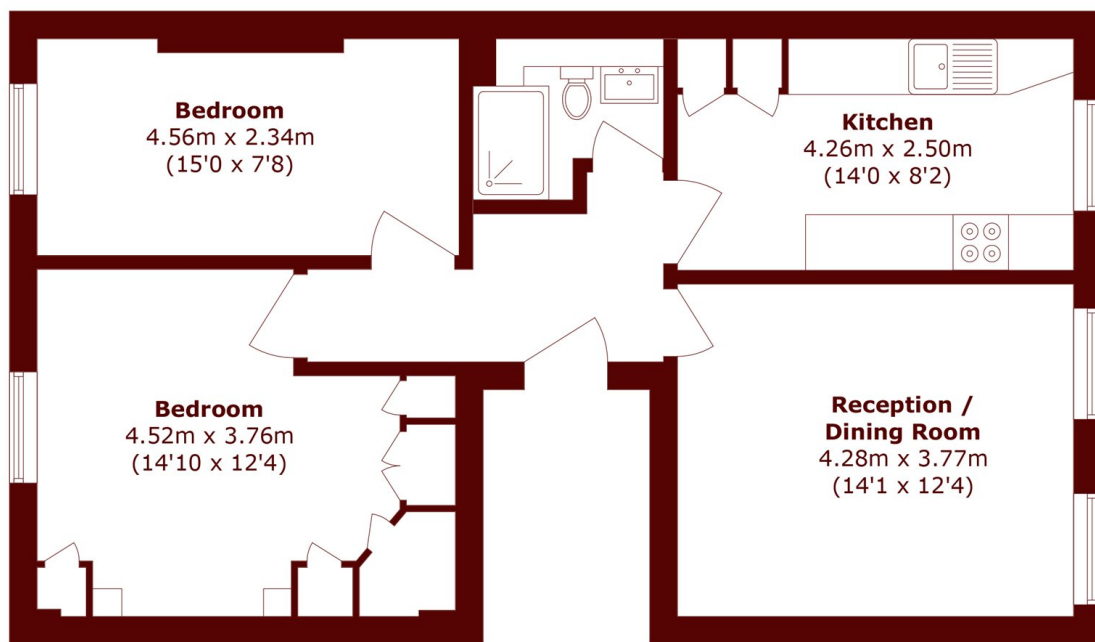


Nevern Square, SW5

£750,000



- Two Double Bedrooms
- Refurbished Bathroom
- Victorian Conversion
- Refurbished Kitchen
- Private Garden Square
- 680 Square Feet



Total area (approx.): 63.2 sq. m (680.2 sq. ft)

Marsh & Parsons South Kensington

29 Harrington Road, London,
SW7 3HD
020 7590 0800