

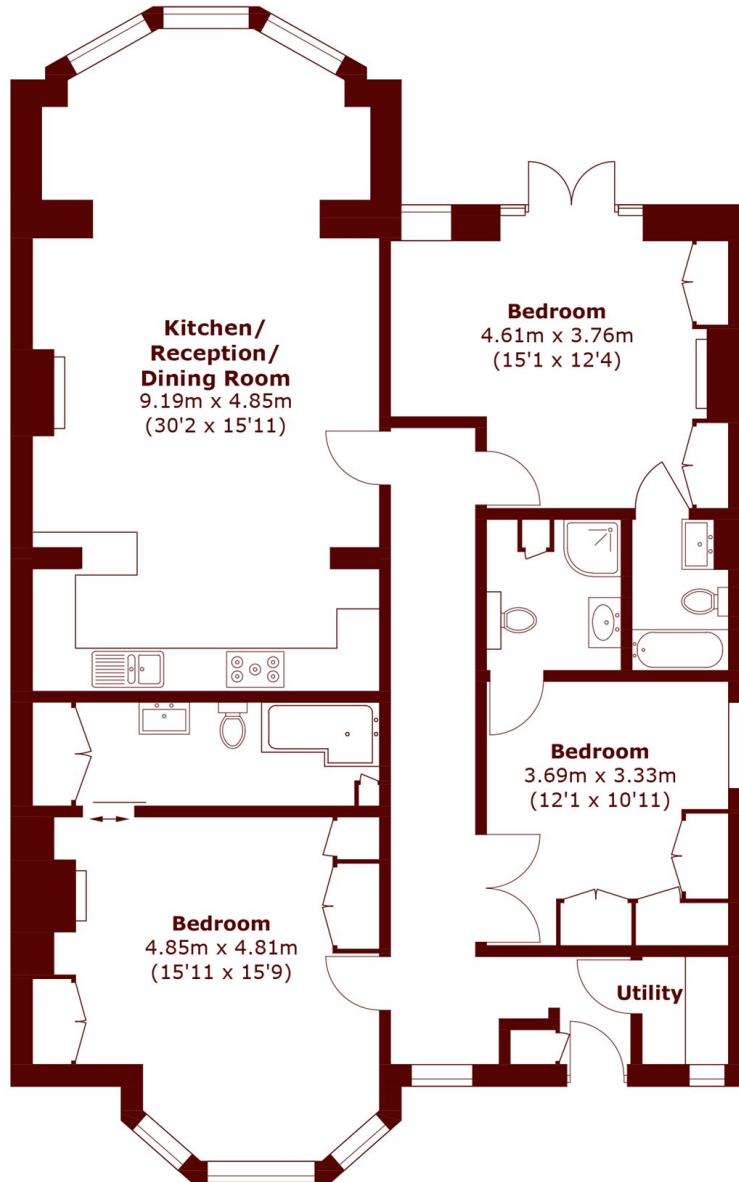


Gledhow Gardens, SW5

£1,175,000



- Three Double Bedrooms
- Three En Suites
- Garden Flat
- Residents Communal Gardens
- Excellent Location
- Share of Freehold



Total area (approx.): 128.4 sq. m (1382.0 sq. ft)

Marsh & Parsons Earls Court

246 Old Brompton Road,
Earls Court, London, SW5
020 7590 0800