



## Trebovir Road, SW5

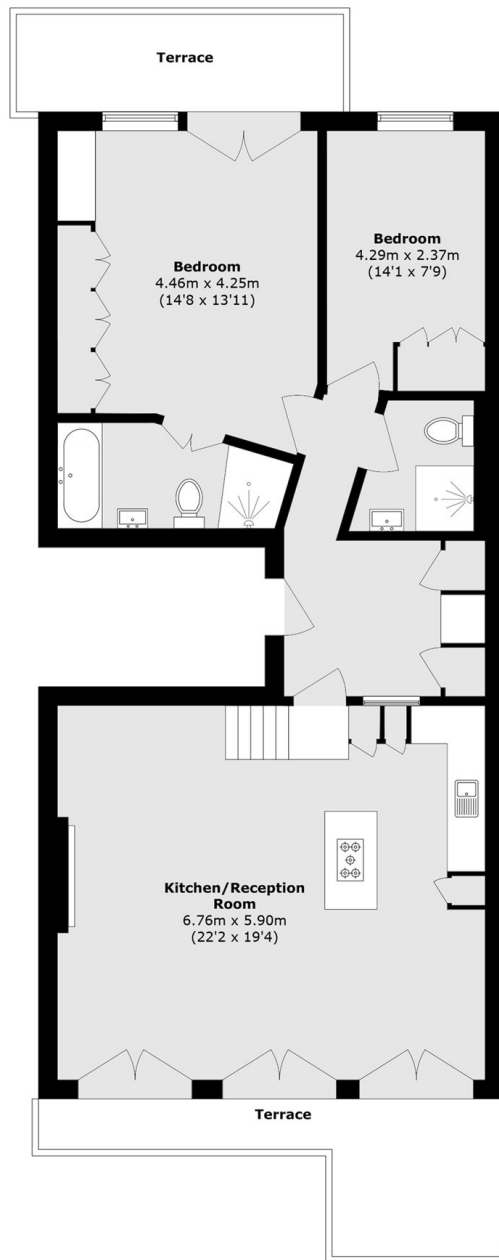
£1,395,000



- First Floor
- Two Double Bedrooms

- Two Bathrooms
- High Ceilings

- Two Private Terraces
- Outstanding Condition



## First Floor

Total area (approx.): 91.3 sq. m (982.7 sq. ft)

Total Terrace area (approx.): 18.3 sq. m (196.9 sq. ft)

### Marsh & Parsons Earls Court

246 Old Brompton Road,  
Earls Court, London, SW5  
020 7590 0800