

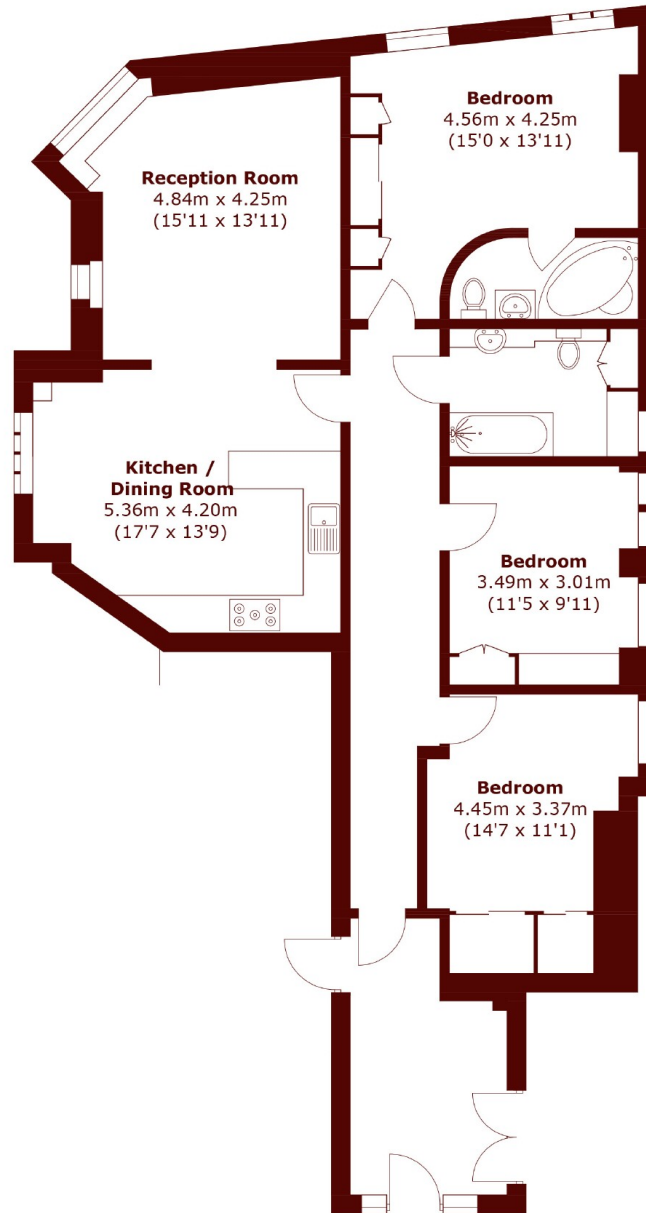


## Langham Mansions, SW5

£1,300,000



- Three Double Bedrooms
- Immaculate Condition
- Lift and Porter
- Exceptionally Bright
- Two Bathrooms
- Garden Square



## First Floor

Total area (approx.): 103.9 sq. m (1,118.4 sq. ft)

### Marsh & Parsons South Kensington

29 Harrington Road, London,  
SW7 3HD  
020 7590 0800