

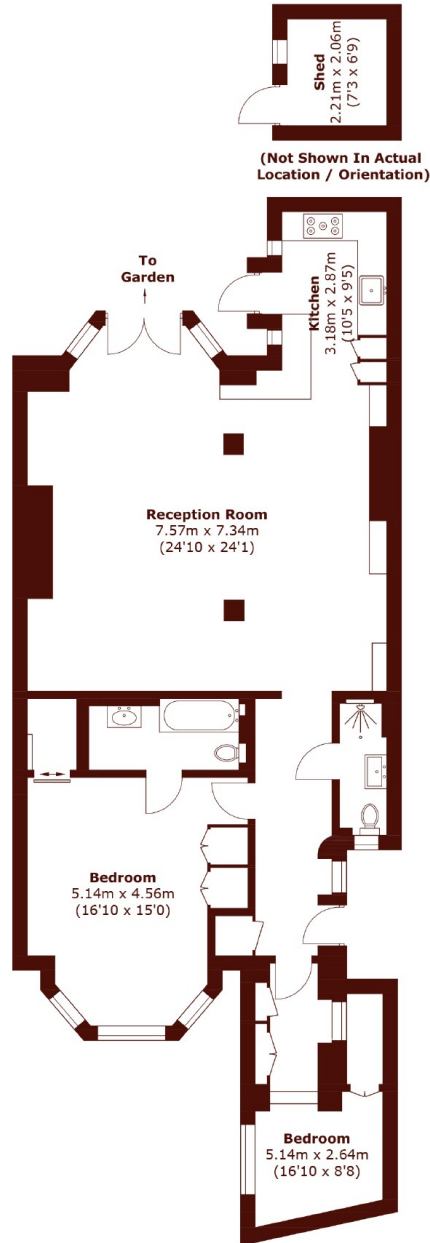


## Earls Court Road, SW5

£1,050,000

 2  2  1  E

- Large West Facing Garden
- Two Bathrooms
- Desirable Location
- Two Bedrooms
- Exceptionally Refurbished
- Office Space



Total area (approx.): 114.0 sq. m (1,227.1 sq. ft)  
Shed: 4.7 sq. m (50.6 sq. ft)

## Marsh & Parsons Earls Court

246 Old Brompton Road,  
Earls Court, London, SW5  
020 7590 0800