

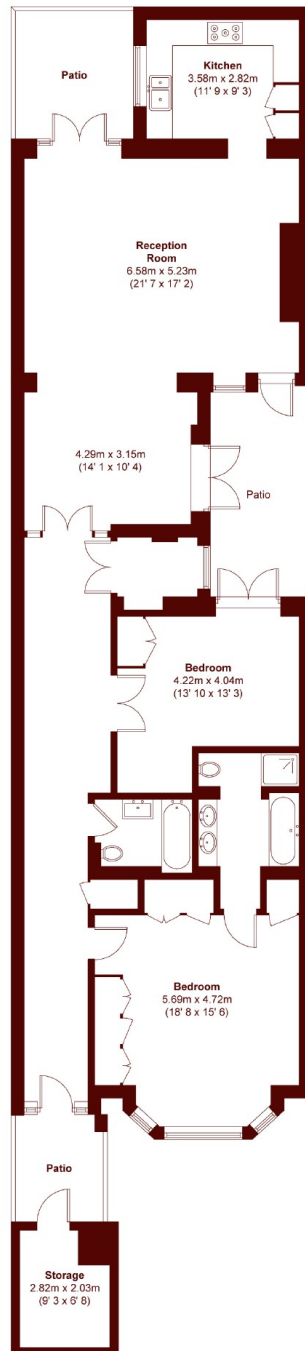


## Courtfield Gardens, SW5

£1,250,000



- Access to Private Gardens
- Two Courtyard Gardens
- Own Entrance
- Superb Entertaining Space
- Large Bedrooms
- Share of Freehold



APPROX. GROSS INTERNAL FLOOR AREA = 1545 SQFT / 143.5 SQM  
 APPROX. GROSS EXTERNAL STORAGE AREA = 62 SQFT / 5.8 SQM  
 APPROX. GROSS EXTERNAL PATIO AREA = 248 SQFT / 23 SQM

## Marsh & Parsons Earls Court

246 Old Brompton Road,  
 Earls Court, London, SW5  
 020 7590 0800

We aim to make our particulars both accurate and reliable. However, they are not guaranteed; nor do they form part of an offer or contract. If you require clarification on any points then please contact us, especially if you're traveling some distance to view. Please note that appliances and heating systems have not been tested and therefore no warranties can be given as to their good working order.