

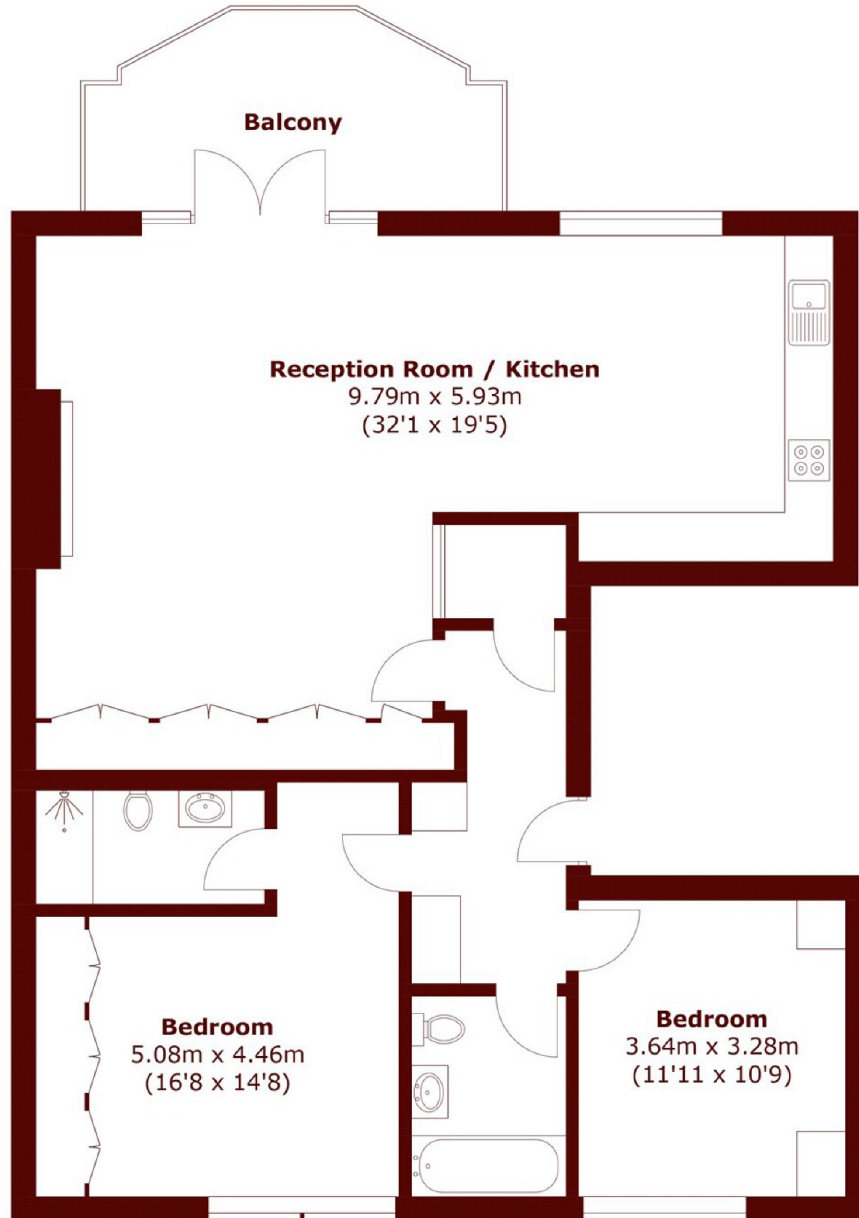


## Gledhow Gardens, SW5

£1,900,000



- First Floor
- Private Terrace
- Views of Gardens
- Excellent Condition
- Two Double Bedrooms
- Two Bathrooms



Total area (approx.): 103.0 sq. m (1,108.7 sq. ft)  
Balcony area (approx.): 10.9 sq. m (117.3 sq. ft)

## Marsh & Parsons Earls Court

246 Old Brompton Road,  
Earls Court, London, SW5  
020 7590 0800