



Adrian Mews, SW10

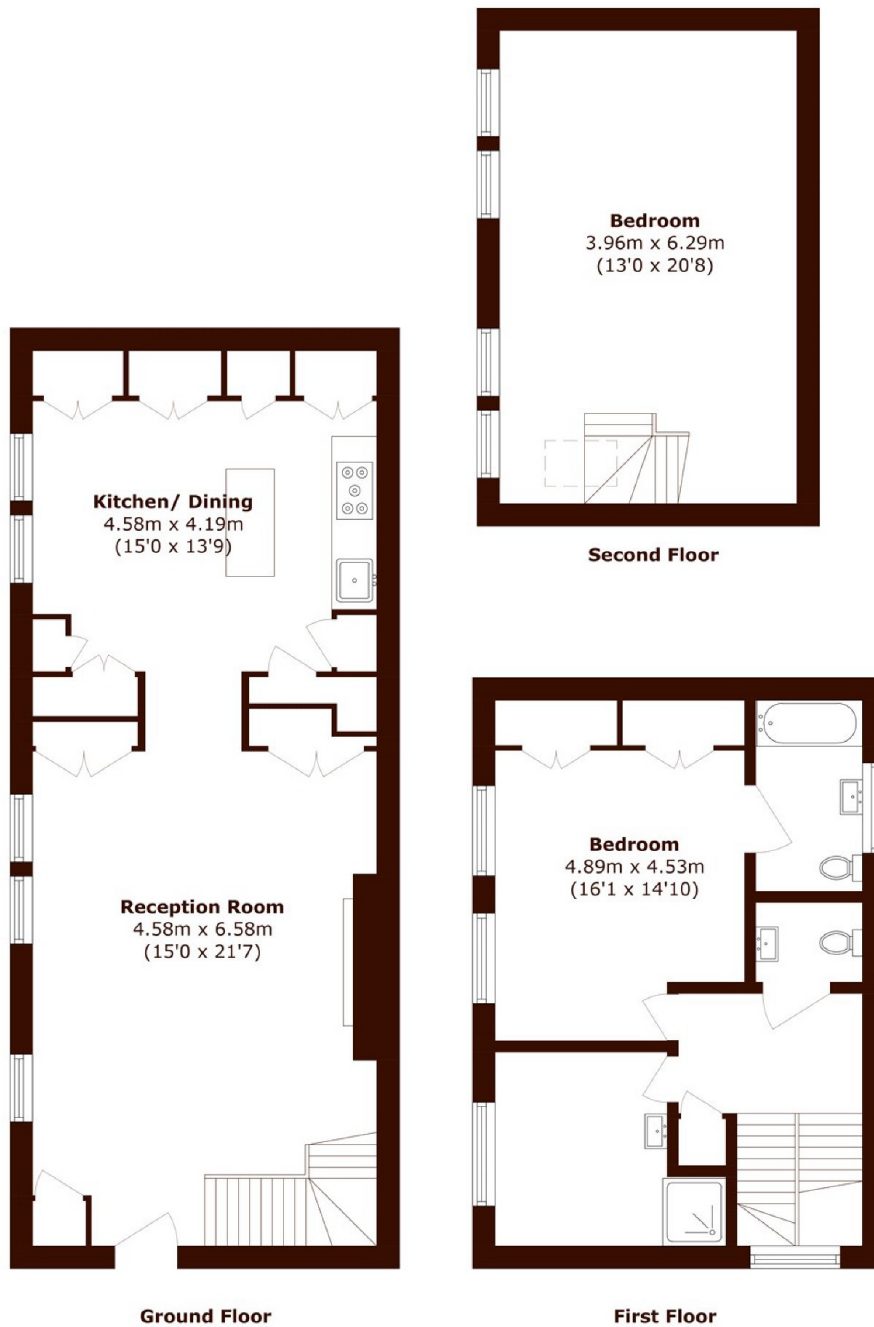
£1,400,000



- Mews House
- Off-Street Parking

- Two Bedrms
- Recently Refurbished

- South-West Facing
- Tranquil Location



Total area (approx.): 114.9 sq. m (1236.7 sq. ft)

Marsh & Parsons South Kensington

29 Harrington Road, London,
SW7 3HD
020 7590 0800

We aim to make our particulars both accurate and reliable. However, they are not guaranteed; nor do they form part of an offer or contract. If you require clarification on any points then please contact us, especially if you're traveling some distance to view. Please note that appliances and heating systems have not been tested and therefore no warranties can be given as to their good working order.