

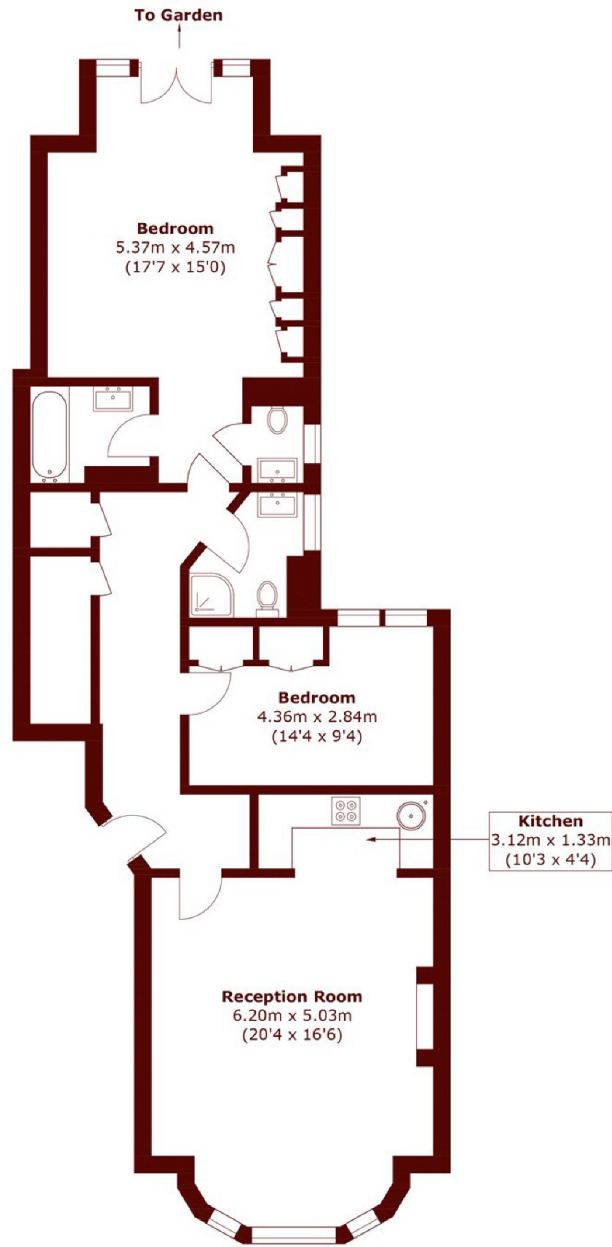


## Earls Court Square, SW5

£1,895,000

 2
  2
  1
  C

- Exquisite Specification
- Residents
- Two Double Bedrooms
- West-Facing Garden
- Raised Ground Floor
- Two Bathrooms



## Ground Floor

Total area (approx.): 100.9 sq. m (1,086.1 sq. ft)

### Marsh & Parsons Earls Court

246 Old Brompton Road,  
Earls Court, London, SW5  
020 7590 0800