

ehB
RESIDENTIAL

Your Property - Our Business



34 Martinique Square, Bowling Green Street, Warwick

£1,100 Per Month



Available from 1st November is this super two bedroom first floor apartment, quietly situated within this highly regarded town centre gated development and with private allocated parking.

A delightful feature is the communal gardens - maintained for the enjoyment of the residents.

Unfurnished

Communal Entrance Hall

Staircase to first floor.

Hall

Front door with spy-hole. Cupboard housing the Pulsa Coil III hot water tank. Creda storage heater. Security entry phone system.

Sitting/Dining Room

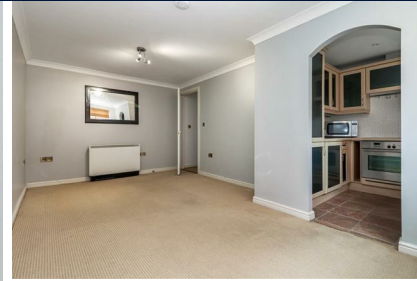
17'6" x 10'2" (5.33 x 3.1)

Two Creda storage heaters. Telephone point. TV aerial point. Smoke detector. Sealed unit double glazed window to central courtyard. Archway to :

Kitchen

7'4" x 6'11" (2.24 x 2.1)

Inset one and a half bowl single drainer sink. Two base units. Wood effect work surfaces. Double and three single wall cupboards. Integrated dishwasher, washer dryer and fridge freezer. Oven, hob and cooker hood over. Sealed unit double glazed window to front. Tiled floor.



Bedroom 1

11'10" plus door recess x 8'4" (3.6 plus door recess x 2.55)

Panel heater. Built-in double wardrobe. Sealed unit double glazed window to front.

Bedroom 2

8'0" x 6'2" (2.45 x 1.88)

Measurements plus door recess and built-in single wardrobe. Panel heater. Sealed unit double glazed window to front.

Bathroom

White suite. Bath with telephone style mixer tap shower attachment. Pedestal wash hand basin. Close coupled w.c. Walls tiled around splash areas. Tiled floor. Dimplex wall fan heater. Extractor fan. Electric shaver point.

Outside

Single allocated parking space.

Communal Gardens

For the enjoyment of the residents.

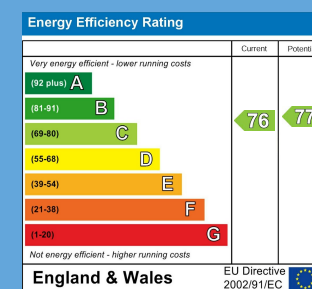
Application – Prior to submitting an application all prospective tenants are required to view the property in person due to high volumes of interest. An online viewing is not sufficient for application purposes.

Your Property - Our Business

- Residential Estate Agents
- Lettings and Property Managers
- Land and New Homes Agents

Warwick Office
17-19 Jury St,
Warwick
CV34 4EL

01926 499540 ehbresidential.com



Also at: Leamington Spa, Somerset House,
Clarendon Place, Royal Leamington Spa CV32 5QN