

ehB
RESIDENTIAL

Your Property - Our Business

 BRITISH

17 Cape Court, Chandley Wharf, Warwick

£975 Per Month

We're Full!

Sorry, no more viewings
are available for this
property

ehB
RESIDENTIAL



Available from 3rd August

Modern and spacious two double bedroom first floor apartment, situated within the ever popular Lower Cape development, and having easy access to Warwick Town Centre.

Briefly comprising; Communal entrance with secure entry system, private entrance hall, spacious living/dining room, fitted kitchen with fridge freezer, oven and hob, washing

machine and dishwasher, master bedroom with built-in wardrobes, additional bedroom and separate bathroom.

Allocated parking.

Council Tax Band - C
EPC Rating - C

UNFURNISHED

Application – Prior to submitting an

application all prospective tenants are required to view the property in person due to high volumes of interest. An online viewing is not sufficient for application purposes.



BRITISH PROPERTY AWARDS 2023 - 2024
GOLD WINNER
LETTING AGENT IN WARWICK



BRITISH PROPERTY AWARDS 2023 - 2024
GOLD WINNER
LETTING AGENT IN WARWICK



BRITISH PROPERTY AWARDS 2023 - 2024
GOLD WINNER
LETTING AGENT IN WARWICK

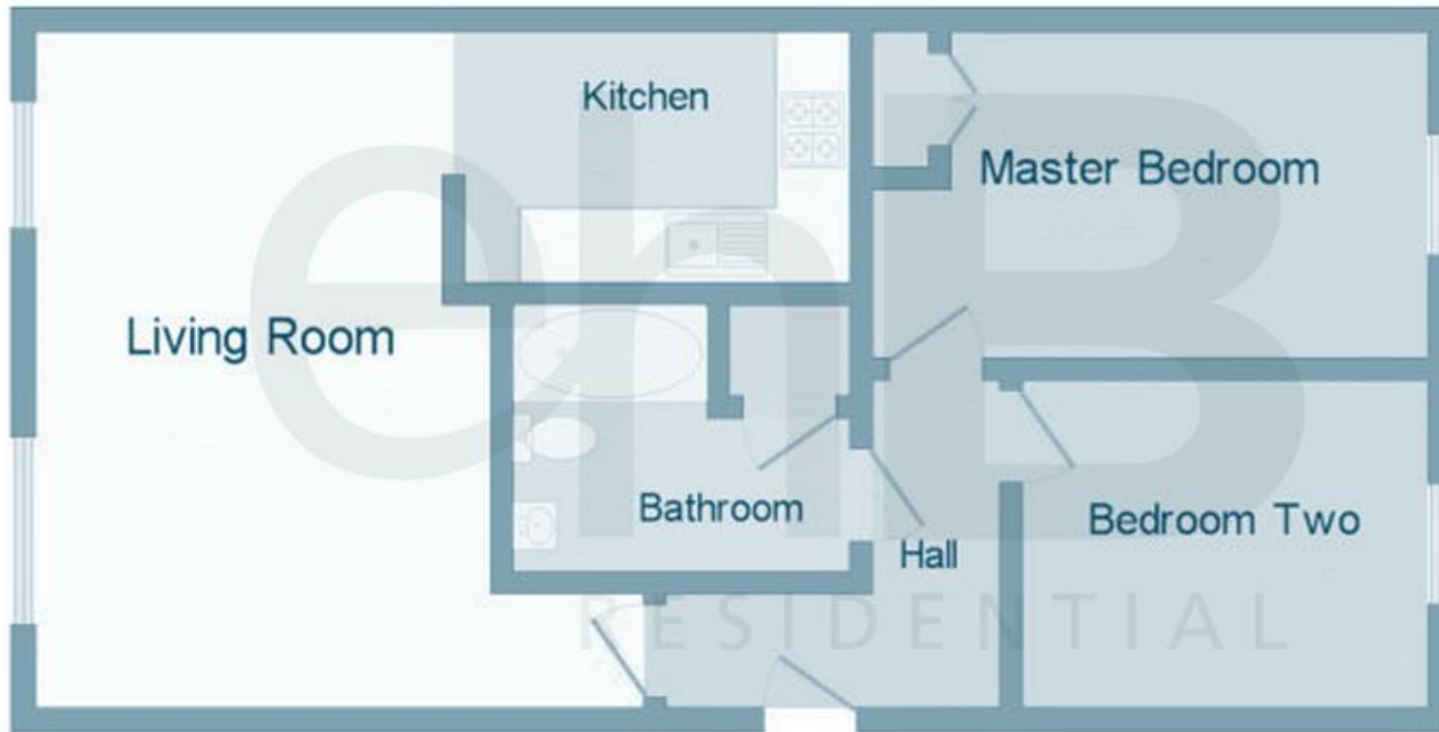


BRITISH PROPERTY AWARDS 2023 - 2024
GOLD WINNER
LETTING AGENT IN WARWICK



BRITISH PROPERTY AWARDS 2023 - 2024
GOLD WINNER
LETTING AGENT IN WARWICK

- Residential Estate Agents
- Lettings and Property Managers
- Land and New Homes Agents



Warwick Office
17-19 Jury St,
Warwick
CV34 4EL

01926 499540 ehbresidential.com

Energy Efficiency Rating		Current	Potential
<i>Very energy efficient - lower running costs</i>			
(92 plus) A			
(81-91) B			
(69-80) C		80	85
(55-68) D			
(39-54) E			
(21-38) F			
(1-20) G			
<i>Not energy efficient - higher running costs</i>			
England & Wales		EU Directive 2002/91/EC	

Also at: Leamington Spa, Somerset House,
Clarendon Place, Royal Leamington Spa CV32 5QN