

Harris & Lee
Estate Agents

www.harrisandlee.net

01934 519200

Harris & Lee

Estate Agents

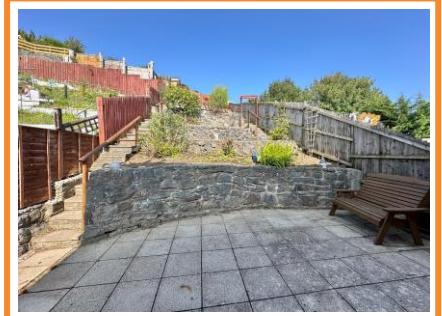
Helping you move with 100 years combined staff experience



Milton Hillside

£290,000

- * *3 Bed Semi Detached*
- * *2 Separate Receptions*
- * *Characterful Tiered Gardens*
- * *Far Reaching Views*
- * *Garage & Driveway*
- * *NO ONWARD CHAIN*



114 High Street, Worle, BS22 6HD

Description

There is 'no onward chain' with this 3 bed semi detached house, situated in one of Milton Hillside's most popular addresses, close to Ashcombe Park. The double glazed and gas centrally heated accommodation includes 2 separate reception rooms, 13' kitchen, bathroom and separate WC. The rear garden is a particular feature, arranged on various levels and although there are many steps here the garden is full of character, plus the upper sections enjoy far reaching views towards the Mendip Hills, Crook Peak and even Weston Coastline in the distance. A garage and driveway is located close by, next to the garage of the adjoining semi.

Accommodation

Entrance

Front entrance door with canopy over, opening to

Entrance Hall 11' 8" x 5' 8" (3.55m x 1.73m) including staircase rising to the first floor accommodation, with cupboard beneath. Telephone point, radiator, double glazed window to side aspect.

Lounge 16' 0" x 10' 10" (4.87m x 3.30m) including feature stone fireplace and hearth. Coved ceiling, radiator. Double glazed bow bay window with views to front aspect.

Kitchen 13' 0" x 7' 0" (3.96m x 2.13m) maximum. Fitted wall and base units, roll edge work surfaces, inset sink unit with mixer tap over and tiling to splash backs. Oven and 4 ring electric hob. Space for cooker and washing machine. Radiator, double glazed window to side aspect. Stable style door to rear garden.

Dining Room 9' 7" x 8' 9" (2.92m x 2.66m) Radiator, coved ceiling, double glazed bow bay window to rear aspect.

First Floor Landing

Coved ceiling with access to loft space. Built-in airing cupboard housing the gas fired boiler. Double glazed window to side aspect.

Bedroom 1 13' 0" x 9' 0" (3.96m x 2.74m) plus door recess. Coved ceiling, radiator, double glazed window with views to front aspect.

Bedroom 2 12' 0" x 8' 8" (3.65m x 2.64m) plus door recess. Coved ceiling, radiator, double glazed window with views over the rear garden.

Bedroom 3 8' 0" x 7' 10" (2.44m x 2.39m) Coved ceiling, radiator, double glazed window with views to front aspect.

Bathroom 5' 6" x 5' 0" (1.68m x 1.52m) Fully tiled walls, comprising bath with 'Mira' shower over, pedestal wash hand basin, radiator. Double glazed window.

Separate WC

Low level WC, radiator, obscure double glazed window.

Outside

Decent size open plan front garden meaning the house is set back from the road. A driveway is located a few metres down the road, next to the garage/driveway of the adjoining semi. The driveway provides off road parking for at least 2 cars and leads to a single garage, with up and over door. The garage measures 16' x 8'3" approx. Gated side access from the house to the rear garden which is a particular feature of this home. The garden is tiered with patio areas set on various levels, complemented with shrubs and flowers. There are steps and hand rails and the upper sections benefit from superb far reaching views across the surrounding area.



Rear Garden & View



Tenure

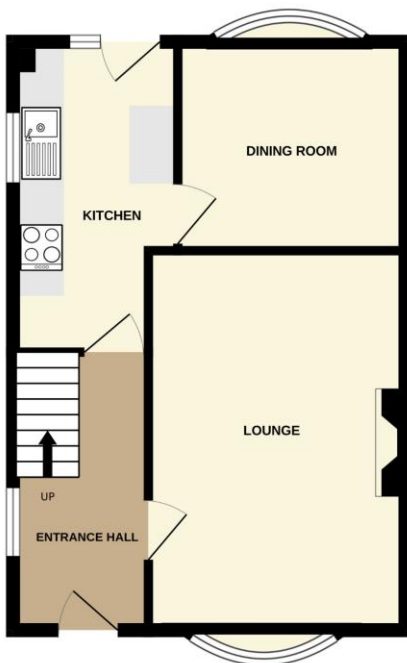
Freehold, council tax band is 'C'.

Other Material Information

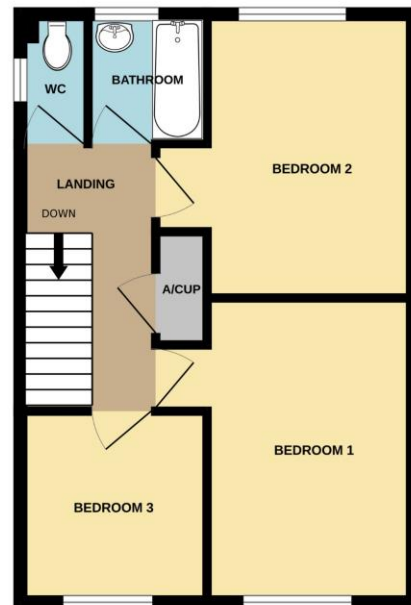
Gas central heating and double glazing. Mains water and drainage. GOV.UK illustrates a very low risk of flooding from rivers and sea and a low risk from surface water. Flooding unlikely from groundwater or reservoir. Superfast full fibre broadband available with a download speed of 56-80mbps, source: Openreach. Virgin Media available at this post code with speeds of up to Gig1.

The energy rating for this property is 'C'.

GROUND FLOOR
406 sq.ft. (37.8 sq.m.) approx.



1ST FLOOR
408 sq.ft. (37.9 sq.m.) approx.



TOTAL FLOOR AREA: 815 sq.ft. (75.7 sq.m.) approx.

Whilst every attempt has been made to ensure the accuracy of the floorplan contained here, measurements of doors, windows, rooms and any other items are approximate and no responsibility is taken for any error, omission or mis-statement. This plan is for illustrative purposes only and should be used as such by any prospective purchaser. The services, systems and appliances shown have not been tested and no guarantee as to their operability or efficiency can be given.
Made with Metroplan v2024.