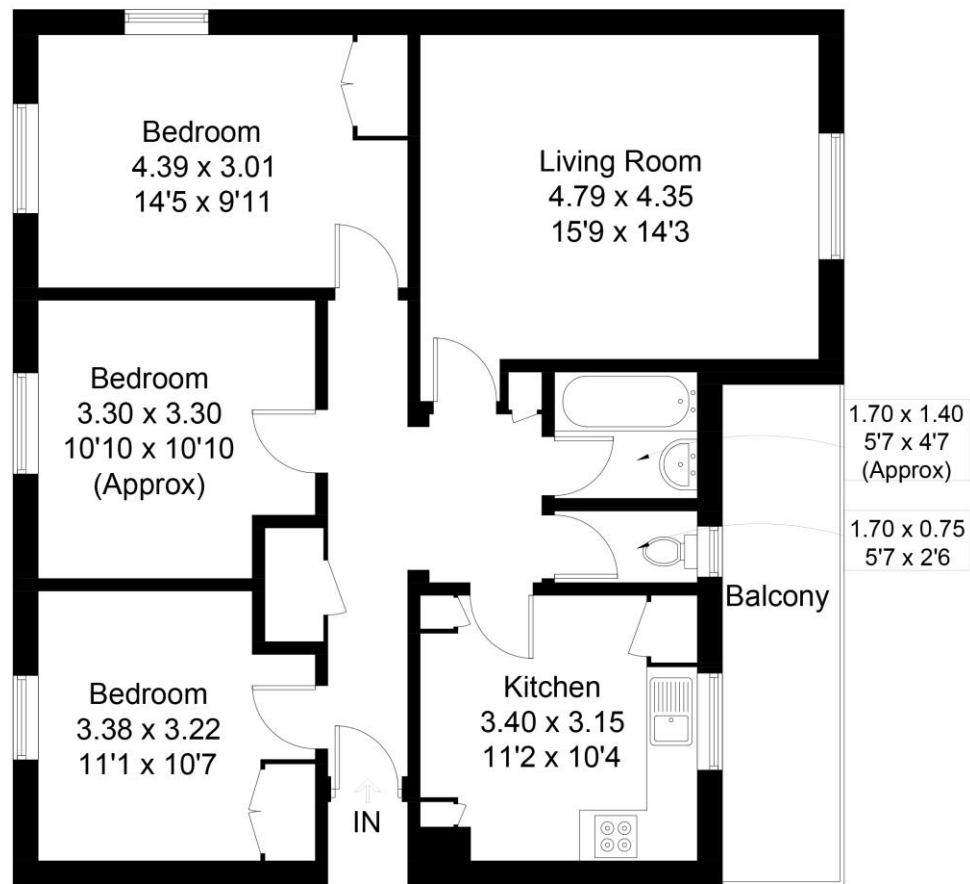






Approximate Gross Internal Area = 81.4 sq m / 876 sq ft



This fantastic three-bedroom flat is situated in a purpose-built block which is ideally located for the amenities of both Clapham and Brixton High Streets. Bonham Road is a quiet and leafy residential street close to central Brixton. It is popular with young professionals looking for fantastic transport links, and families with young children due to its proximity to both the Corpus Christie and Sudbourne Road primary schools. The property is spacious throughout and has three good sized bedrooms, a large reception room and a separate kitchen. The apartment also benefits from a large balcony with great views. Sold with a long lease, this property would be perfect for a first-time buyer or buy-to-let investor.

beresfordresidential.com

020 7326 7450

B1160

