



Witley Road, N19 5SQ

£1,600 pcm



Witley Road

£1,600 pcm

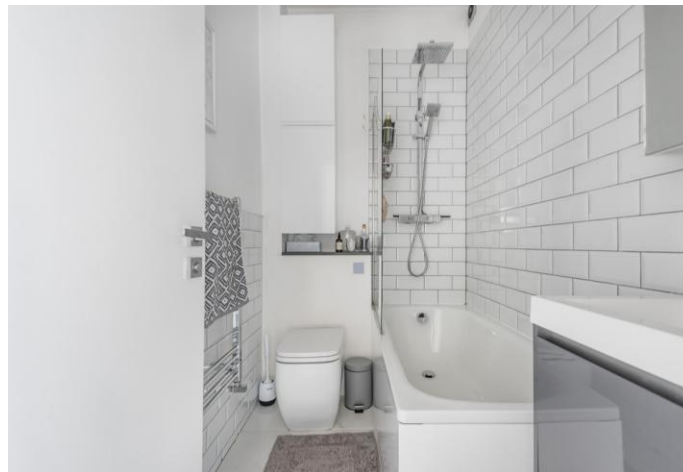
A stunning one bedroom apartment set on the second floor of this mid-terrace Victorian house moments walk from Archway tube station N19.

The property comprises of a spacious reception room, separate modern kitchen, a sizable bedroom with built in wardrobes, ample storage, modern fully fitted bathroom, laminate flooring, double glazed windows and gas central heating. Ideal for a single professional or a professional couple.

Located just off Holloway Road, you have the convenience of Holloway Road overground station less than five minutes walk, and moments from Archway Tube Station (Northern line). You are also spoiled for choice with endless options of trendy shops and restaurants nearby. Offered Furnished, Available 10th of July.

- One bedroom
- Victorian Conversion
- Modern Fully Fitted Kitchen
- Second Floor
- Comprising 360sqft/34sqm
- EPC Rating: C
- Offered Furnished
- Available 10th of July





Notes



DAVID
ANDREW

your
most
valuable
asset

Archway Office

671 Holloway Road
London, N19 5SE

T (0)20 7619 3750

Highbury Office

90 Highbury Park
London N5 2XE

T (0)20 7354 9111

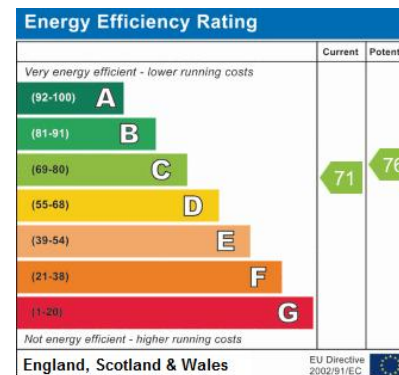
Stroud Green Office

167 Stroud Green Road
London N4 3PZ

T (0)20 7281 2000

General Contact

E info@davidandrew.co.uk



Reference:
Witley Road, N19

Agent's Note:
Whilst Care has been exercised in the preparation of these sales particulars, statements about the property must not be relied upon as representations of statements or fact. Prospective purchasers must make and rely upon their own enquiries and those of professional representatives. The company accept not liability for any error contained in these particulars.