



Whewell Road, London
£975,000

**DAVID
ANDREW**

your
most
valuable
asset

Whewell Road

David Andrew are proud to present this outstanding investment opportunity, whether you are looking for 2 x two bedroom flats to rent out, or to turn this amazing property back into your freehold family dream home.

Set over two levels in the quite tree lined family friendly street, this south facing property with private garden is an excellent option. Currently downstairs offers two bedrooms plus open plan living, a modern kitchen and bathroom and wooden flooring throughout. Upstairs is similar with a sun filled reception and kitchen, plus two more bedrooms and family bathroom.

This sought after location provides excellent access to local shops and amenities as well as Archway & Holloway Underground Stations and Upper Holloway Overground with good schools close by, not to mention the popular Landseer Arms and park.

Council Tax band: E

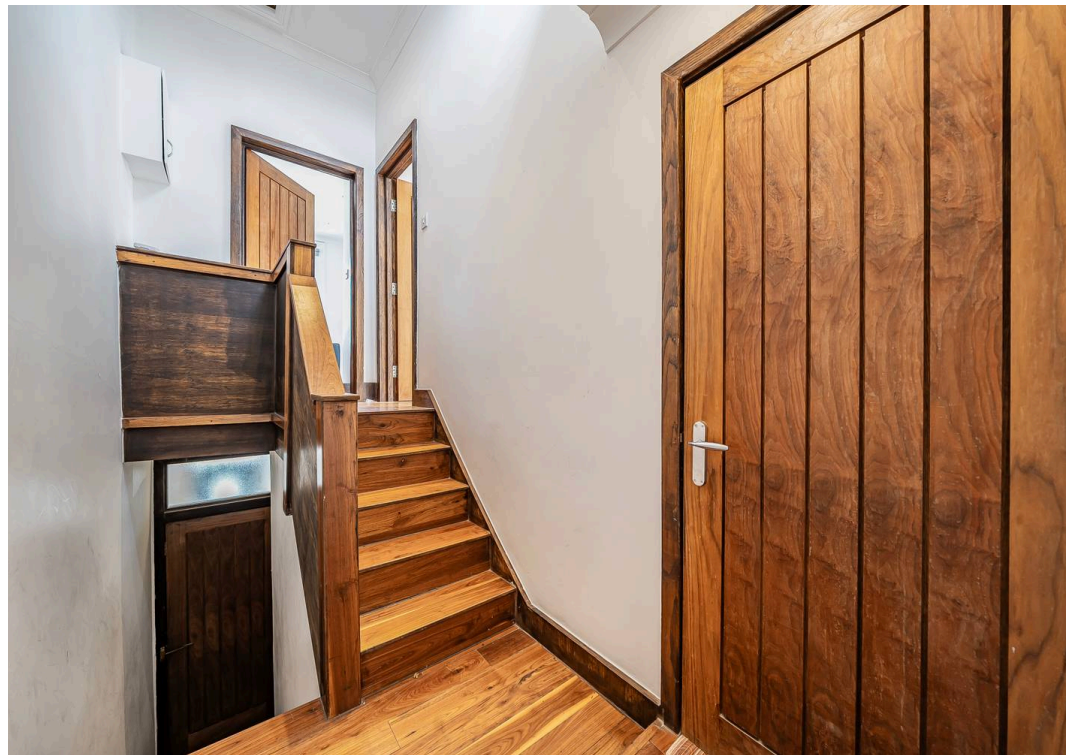
Tenure: Freehold

EPC Energy Efficiency Rating: D

EPC Environmental Impact Rating: D

- 1095 Sq ft - 102 sqm
- Freehold
- 2 x Two Bedroom Flats
- Picturesque Tree Lined Street
- Private South Facing Garden
- Excellent Potential for a Family Home
- Renovated Throughout



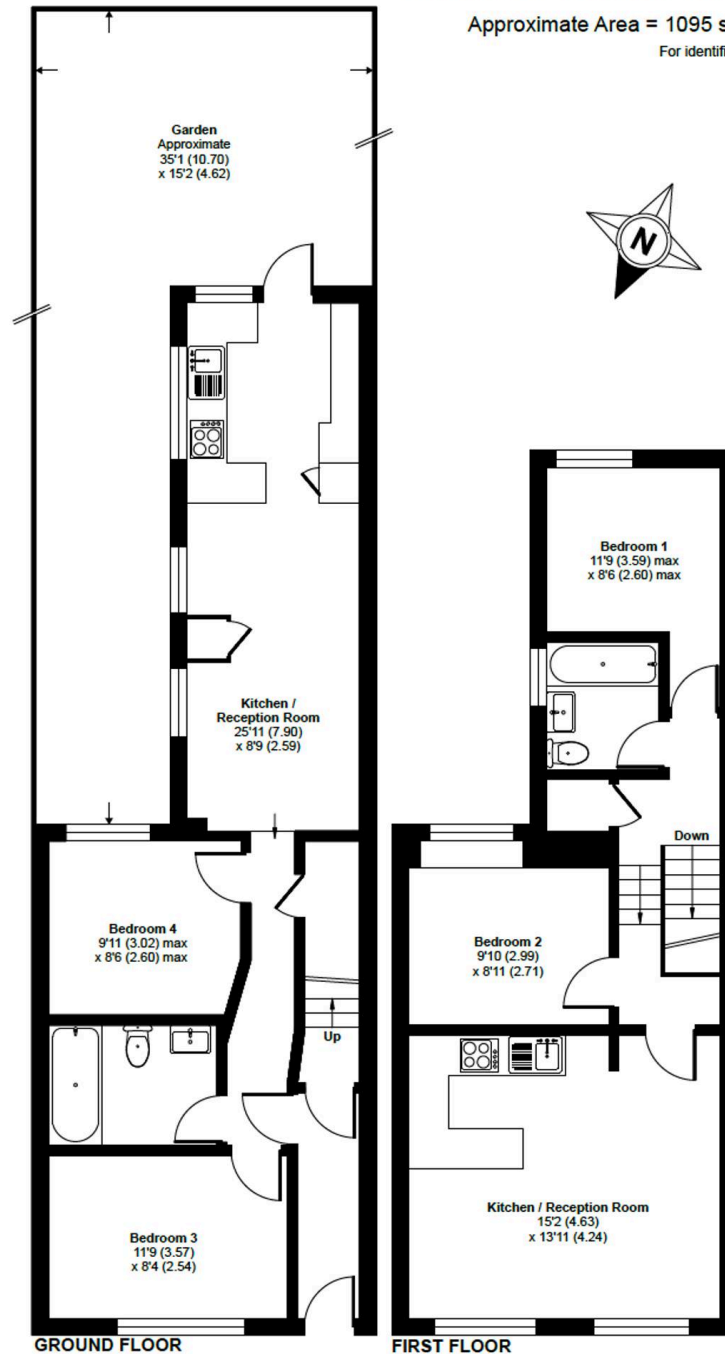


Whewell Road, London, N19

Approximate Area = 1095 sq ft / 101.7 sq m
For identification only - Not to scale

**DAVID
ANDREW**

your
most
valuable
asset



Floor plan produced in accordance with RICS Property Measurement 2nd Edition, Incorporating International Property Measurement Standards (IPMS2 Residential). © nitchcom 2025. Produced for David Andrew. REF: 1290798



has been exercised in the of these particulars, about the property must not be n as representations of or fact. Prospective applicants and rely upon their own and those of professional ves. David Andrew Estates liability for any error contained in these particulars.

Archway Office

671 Holloway Road
London, N19 5SE

T (0)20 7619 3750

Highbury Office

90 Highbury Park
London, N5 2XE

T (0)20 7354 9111

Finsbury Park Office

167 Stroud Green Road
London, N4 3PZ

T (0)20 7281 2000

Property Management Office

235 Blackstock Road
London, N5 2LL

T (0)20 7354 9222

