



Church Crescent, N10 3NA
£1,750 pcm

**DAVID
ANDREW**

your
most
valuable
asset

An exquisite and contemporary one-bedroom apartment situated on the first floor of a period conversion in the sought-after Muswell Hill. Nestled on a peaceful residential street, this property is just a short stroll from the vibrant Muswell Hill Broadway. Key features of the apartment comprise a generously sized semi open-plan reception room, a modern kitchen, a spacious double bedroom, a fully equipped modern bathroom, laminated flooring, ample storage space, bright and airy ambience, gas central heating, and double-glazed windows.

Located on Church Crescent, the property is in close proximity to the diverse range of boutique shops, charming cafes, and fine dining options offered by Muswell Hill Broadway. Additionally, the property benefits from its strategic proximity to Alexandra Park and Highgate Wood. The excellent bus links to Finsbury Park Station (Victoria & Piccadilly Lines), Highgate Station, Wood Green/Turnpike Lane stations further enhance its accessibility. The apartment is available furnished and will be ready for occupancy on the 16th of June.

Council Tax band: D

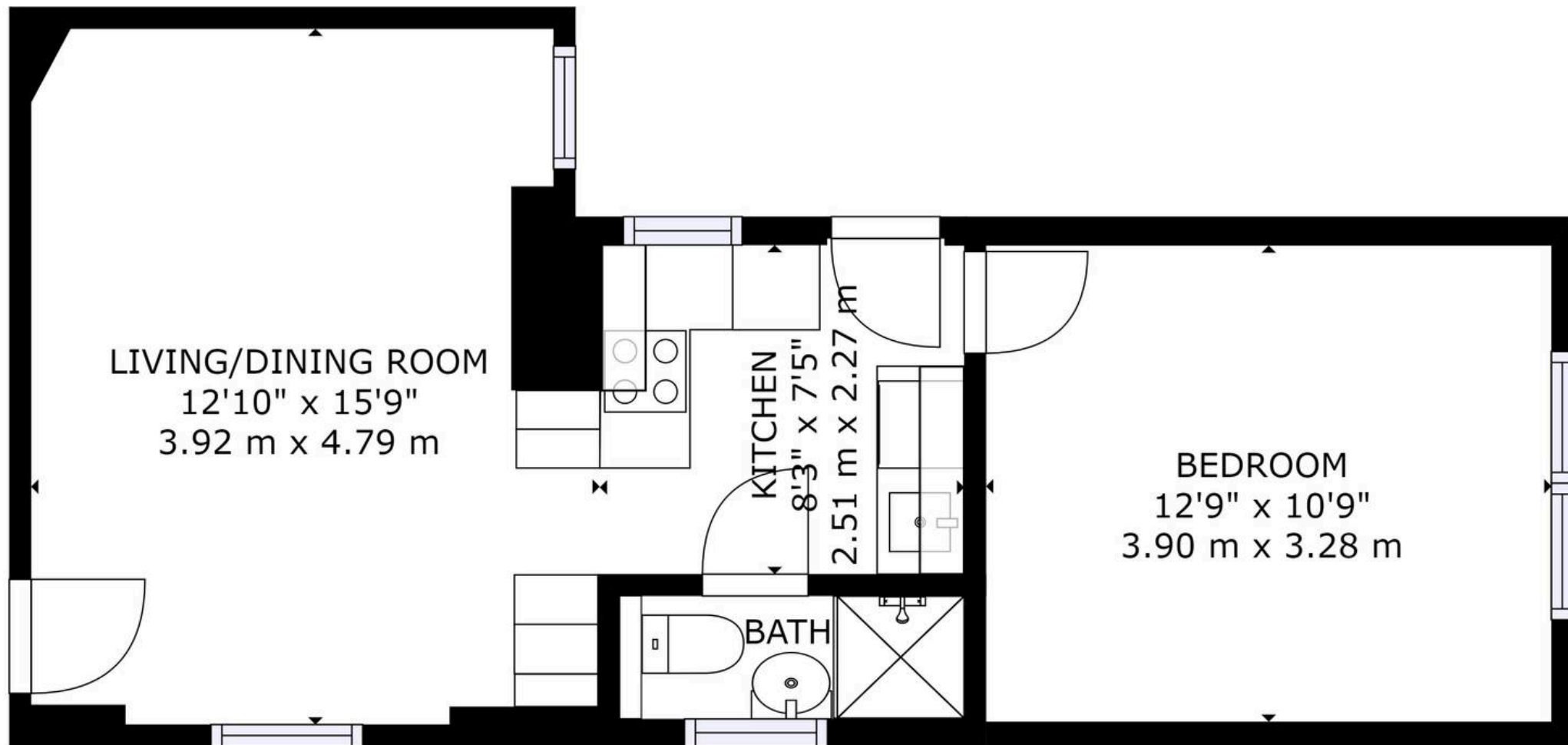
EPC Energy Efficiency Rating: D

EPC Environmental Impact Rating: D

- One Bedroom
- Semi Open Plan
- Modern Finish Throughout
- Period Conversion
- Excellent Location
- Comprising 430SQFT/41SQM
- Offered Furnished
- Available 16th of June







scan to book
a viewing

FLOOR 1



GROSS INTERNAL AREA
FLOOR 1: 429 sq. ft, 40 m²
TOTAL: 429 sq. ft, 40 m²

SIZES AND DIMENSIONS ARE APPROXIMATE, ACTUAL MAY VARY.

 **Matterport**

in these particulars.