



**702 Holloway Road, London**

Fixed Price **£625,000**

**DAVID  
ANDREW**

your  
most  
valuable  
asset

# 702 Holloway Road

London, London

David Andrew are proud to present this meticulously renovated garden maisonnette, with 848 sqft of living space set over the ground and lower ground. With clever design and triple glazing this peaceful home is very quite, yet located for perfect transport link. Upstairs offers a large open plan kitchen/reception/dining flowing to the private garden, plus offering a WC/Utility room. Downstairs you will find an abundance of storage, two large double rooms, a family bathroom/semi ensuite and well designed lightwell patios. This Share of Freehold property is offered to the market by genuine sellers after a decade long tenure.

You'll walk past Whittington Park on your way to the Upper Holloway overground station (2-3 minutes) and Archway underground station (Northern Line) at the top of Holloway Road. The property is within easy reach of numerous local shops, cafes, restaurants and amenities, including a cinema and 24-hour gym.

Council Tax band: D

Tenure: Share of Freehold

EPC Energy Efficiency Rating: D

EPC Environmental Impact Rating: C

- 848 sqft - 78.8 sqm
- Fully Renovated
- Private Garden
- Large Family Bathroom / Semi Ensuite
- Triple Glazed
- Large Open Plan Living w/ High Ceilings
- WC / Utility Room
- Share of Freehold
- Close to Amenities
- Excellent Transport Links





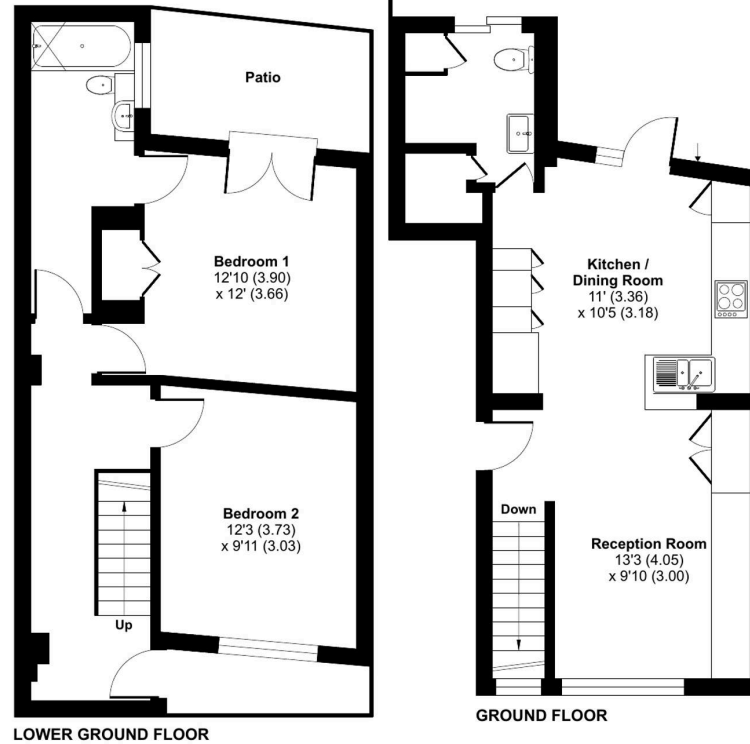




## Holloway Road, London, N19

Approximate Area = 848 sq ft / 78.8 sq m

For identification only - Not to scale



Floor plan produced in accordance with RICS Property Measurement 2nd Edition, incorporating International Property Measurement Standards (IPMS2 Residential). © nichecom 2025. Produced for David Andrew. REF: 1258469



## David Andrew Estates

671 Holloway Road, London – N19 5SE

020 7619 3750 • [archway@davidandrew.co.uk](mailto:archway@davidandrew.co.uk) • [www.davidandrew.co.uk/](http://www.davidandrew.co.uk/)

*scan to book  
a viewing*

