



227a Holloway Road, London  
£3,000 PCM

**DAVID  
ANDREW** | your  
most  
valuable  
asset

# 227a Holloway Road

London, London

Nestled in an excellent location, this four-bedroom apartment presents both modern living space and convenience located moments from Holloway Road Station.

Boasting four double bedrooms and two bathrooms, this split-level apartment offers a light and airy atmosphere perfect for sharers. Spread over three levels, the open-plan layout is complemented by laminate flooring throughout, creating a seamless flow. With a generous 782sqft/72.7sqm of living space, this property is perfect for those seeking a comfortable and well-connected home. Further features include ample storage and double glazed windows.

Benefitting from a prime position, residents will find themselves in close proximity to Highbury & Islington Station (Victoria Line & Overground), Holloway Road Station (Piccadilly Line), and an array of amenities, restaurants, and cafes. its prime location and spacious interiors, residents can enjoy the nearby green spaces and parks that the area has to offer. Embrace urban living at its finest in this stylish and convenient residence. Offered Furnished or Part Furnished, Available Now.

Council Tax band: D

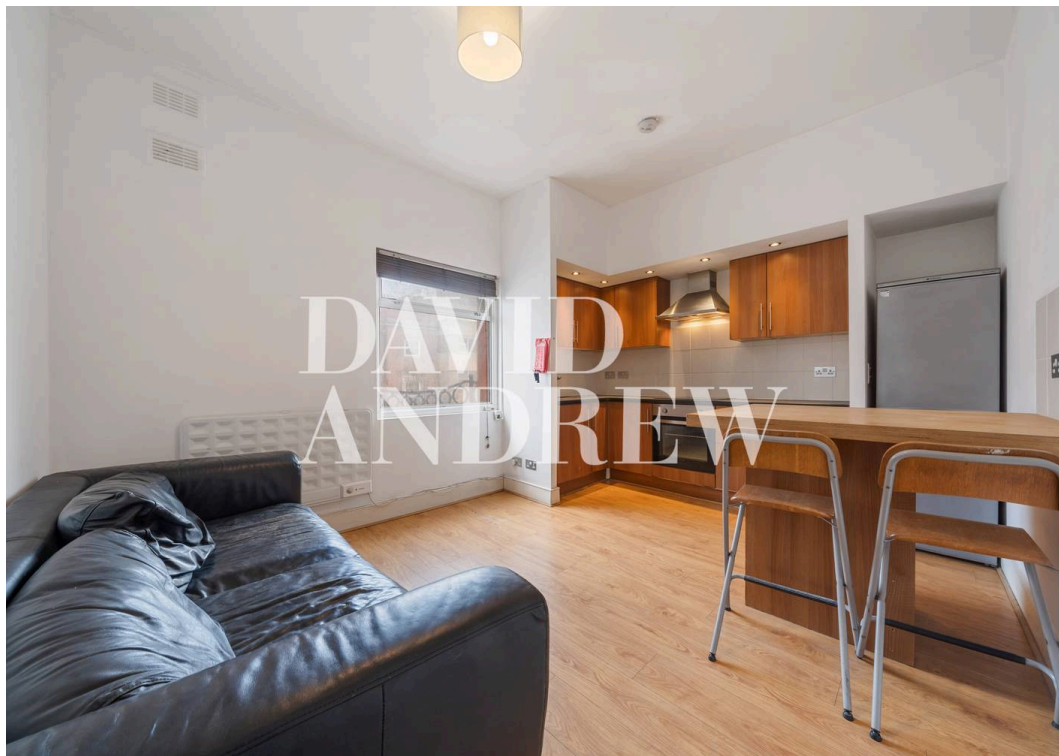
EPC Energy Efficiency Rating: E

EPC Environmental Impact Rating:

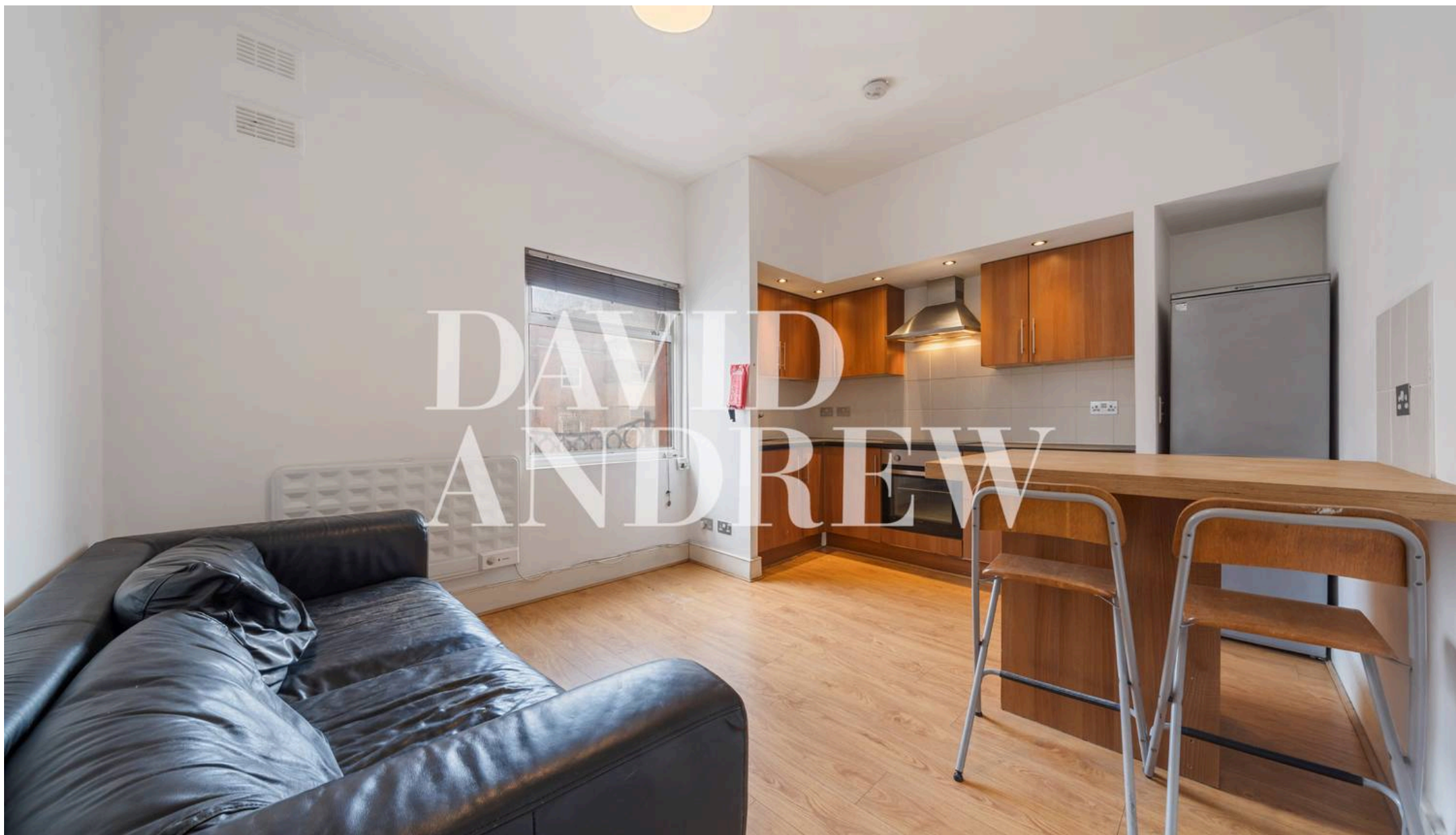
- Four Double Bedrooms
- Two Bathrooms
- Open Plan
- Excellent Location
- Split Level
- Light & Airy
- Comprising: 782sqft/72.7sqm
- EPC Rating: E
- Offered Furnished or Part Furnished
- Available Now











## David Andrew Estates

671 Holloway Road, London - N19 5SE

020 7619 3750 • [archway@davidandrew.co.uk](mailto:archway@davidandrew.co.uk) • [www.davidandrew.co.uk/](http://www.davidandrew.co.uk/)

*scan to book  
a viewing*

