



Norcombe House, N19 4RD

£365,000
Leasehold



Norcombe House

£365,000

Leasehold

A bright and well laid out apartment on the second floor of this purpose-built, red brick block. The property comprises one double-bedroom, a spacious reception/dining room, a separate fitted kitchen, a three-piece bathroom and a large communal garden. The flat further benefits from double glazing, gas central heating and good storage.

Wedmore Street is well located for access to Whittington Park and is within walking distance of Upper Holloway overground station and Archway underground station (Northern Line). The flat is also serviced by a number local amenities including supermarkets, cafes, restaurants, bars and a cinema

- 622 sqft / 57.7 sqm
- Second floor
- Leasehold
- One double bedroom
- Communal garden
- Excellent transport links
- Mansion block
- EPC rating C

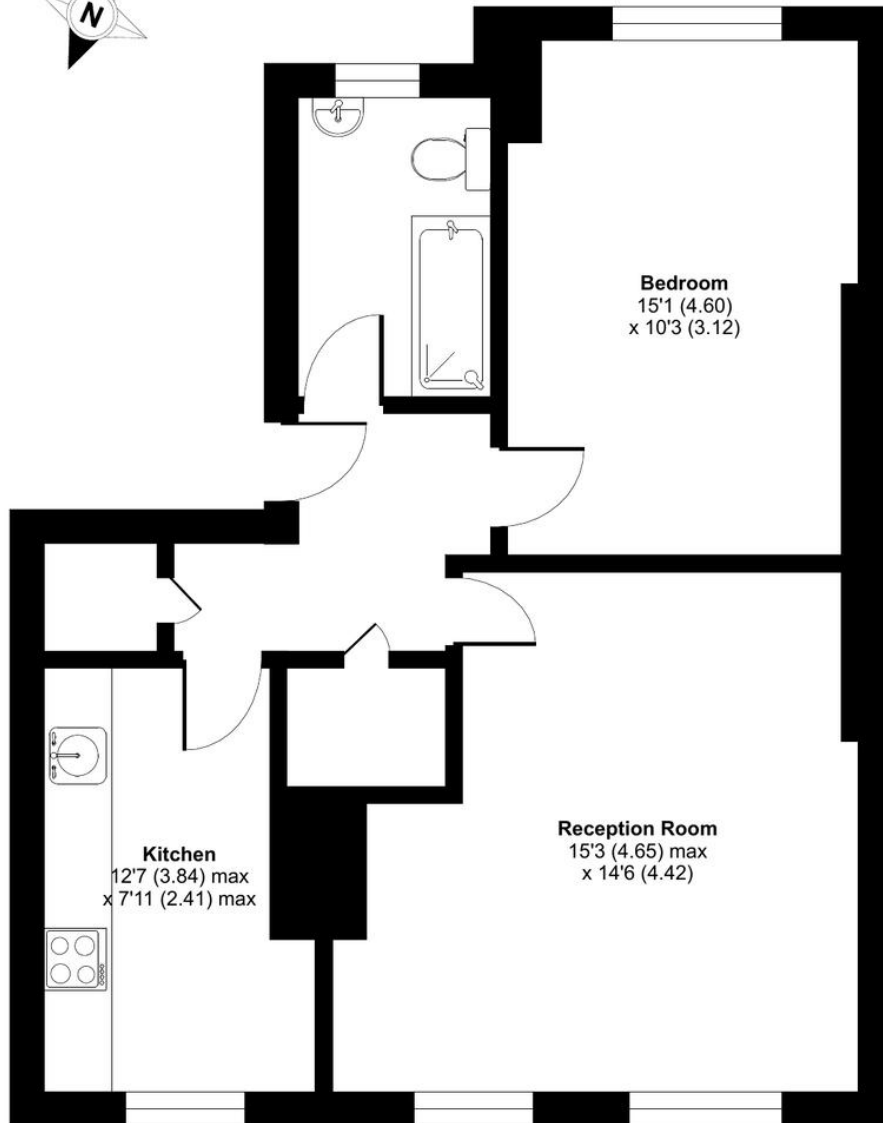




Wedmore Street, London, N19

Approximate Area = 622 sq ft / 57.7 sq m

For identification only - Not to scale



SECOND FLOOR



Certified Property Measurer

Floor plan produced in accordance with RICS Property Measurement Standards incorporating International Property Measurement Standards (IPMS2 Residential). © nchecom 2023. Produced for David Andrew. REF: 1188937



DAVID ANDREW

your most valuable asset

Archway Office

671 Holloway Road
London, N19 5SE

T (0)20 7619 3750

Highbury Office

90 Highbury Park
London N5 2XE

T (0)20 7354 9111

Stroud Green Office

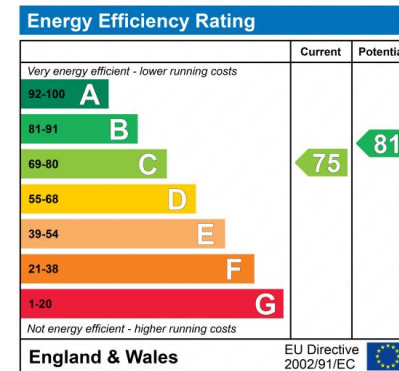
167 Stroud Green Road
London N4 3PZ

T (0)20 7281 2000

General Contact

E info@davidandrew.co.uk

W www.davidandrew.co.uk



Agent's Note:

Whilst Care has been exercised in the preparation of these sales particulars, statements about the property must not be relied upon as representations of statements or fact. Prospective purchasers must make and rely upon their own enquiries and those of professional representatives. The company accept not liability for any error contained in these particulars.

