



Wessex House, Wedmore Street, N19 4EG

£650,000  
Leasehold



# Wessex House,

£650,000

Leasehold

This substantial maisonette is situated on the upper floors of this purpose-built, red-brick mansion block and offers 1,077 square feet of living space. The property boasts 3 bedrooms, a spacious living / dining room, a large dual-aspect kitchen, family bathroom, separate shower room, guest toilet and built-in storage. The flat is presented in excellent condition and offers the possibility of ground-floor bike storage and designated parking via Islington Council.

Wessex House is situated within the Yerbury School catchment area and overlooks Whittington Park. Transport links are also very good with the Upper Holloway overground line and Archway underground station (Northern line) within walking distance. A wealth of shops, cafes, pubs, restaurants and other amenities are also available on Holloway Road and the surrounding area.

- 1,077 sqft / 100 sqm
- 3 bedrooms
- Spacious living / dining room
- Eat-in kitchen
- Family bathroom
- Yerbury school catchment area
- Leasehold
- Good transport links





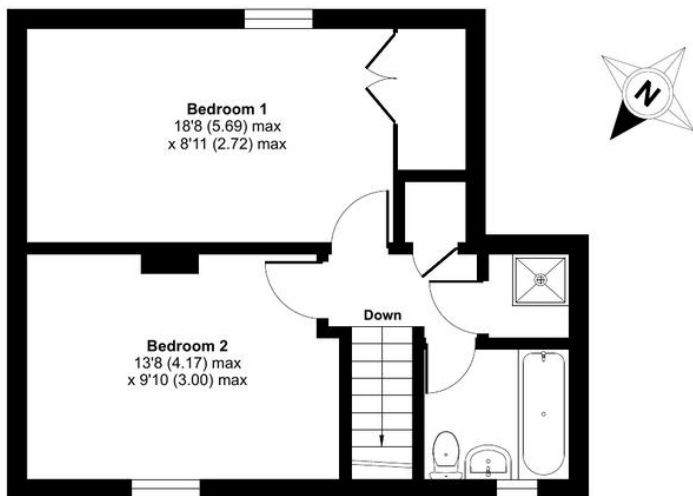
# Wedmore Street, N19

Approximate Area = 1077 sq ft / 100 sq m

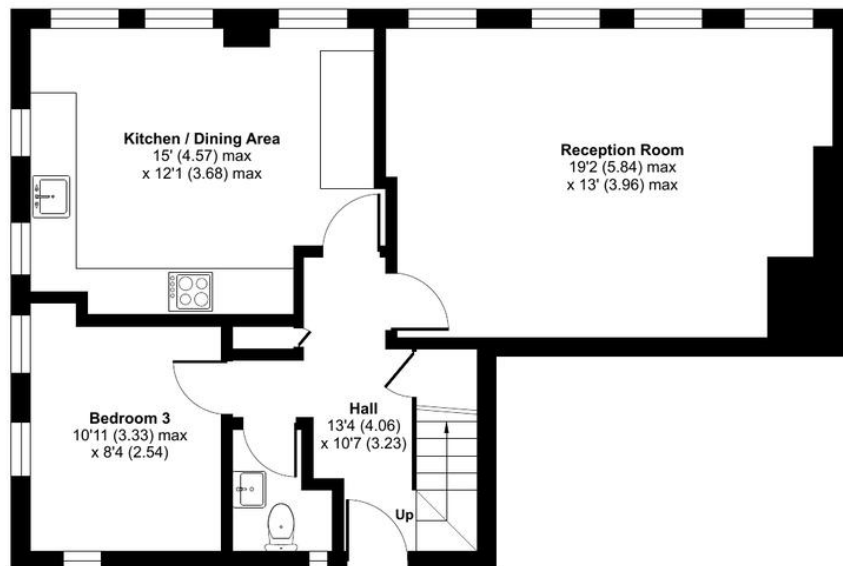
For identification only - Not to scale

# DAVID ANDREW

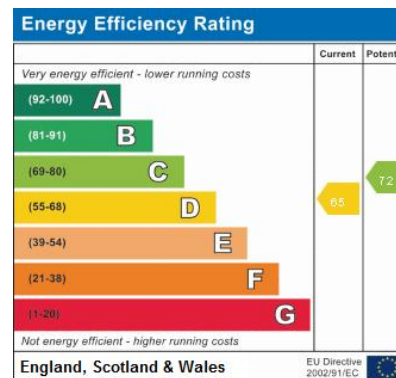
your most valuable asset



FOURTH FLOOR



THIRD FLOOR



Reference:  
Agent's Note:

Whilst care has been exercised in the preparation of these sales particulars, statements about the property must not be relied upon as representations of statements or fact. Prospective purchasers must make and rely upon their own enquiries and those of professional representatives. The company accept not liability for any error contained in these particulars.

Archway Office

671 Holloway Road  
London, N19 5SE

T (0)20 7619 3750

Highbury Office

90 Highbury Park  
London N5 2XE

T (0)20 7354 9111

Stroud Green Office

167 Stroud Green Road  
London N4 3PZ

T (0)20 7281 2000

General Contact



www.davidandrew.co.uk



Floor plan produced in accordance with RICS Property Measurement Standards incorporating International Property Measurement Standards (IPMS2 Residential). © nchecom 2024. Produced for David Andrew. REF: 1138311

