



Elthorne Road, N19 4AS

£650,000
Leasehold



Elthorne Road

£650,000

Leasehold

This contemporary, purpose-built apartment is situated on the top floor on a desirable residential street. The property is bathed in natural light and includes an open-plan kitchen/reception area, two bedrooms, a three-piece bathroom, and a large private terrace offering excellent views. It also comes with ample built-in storage added benefits, such as bicycle storage, elevator access, a secure entry system, and is available for purchase chain-free.

Kinver House enjoys a prime location with convenient access to transport links, such as Archway Underground Station (Northern Line, Zone 2), Upper Holloway, and Crouch Hill Overground Stations. The apartment is also within easy reach of Waterlow Park, Finsbury Park, Highgate, and the wide array of amenities in Crouch End, with Holloway Road and Tufnell Park just a brief stroll away.

- 791 SQ FT / 73.4 SQ M
- 2 bedrooms
- Open plan kitchen/living room
- Bike storage
- Lift access
- EPC C
- Chain free
- Excellent amenities nearby

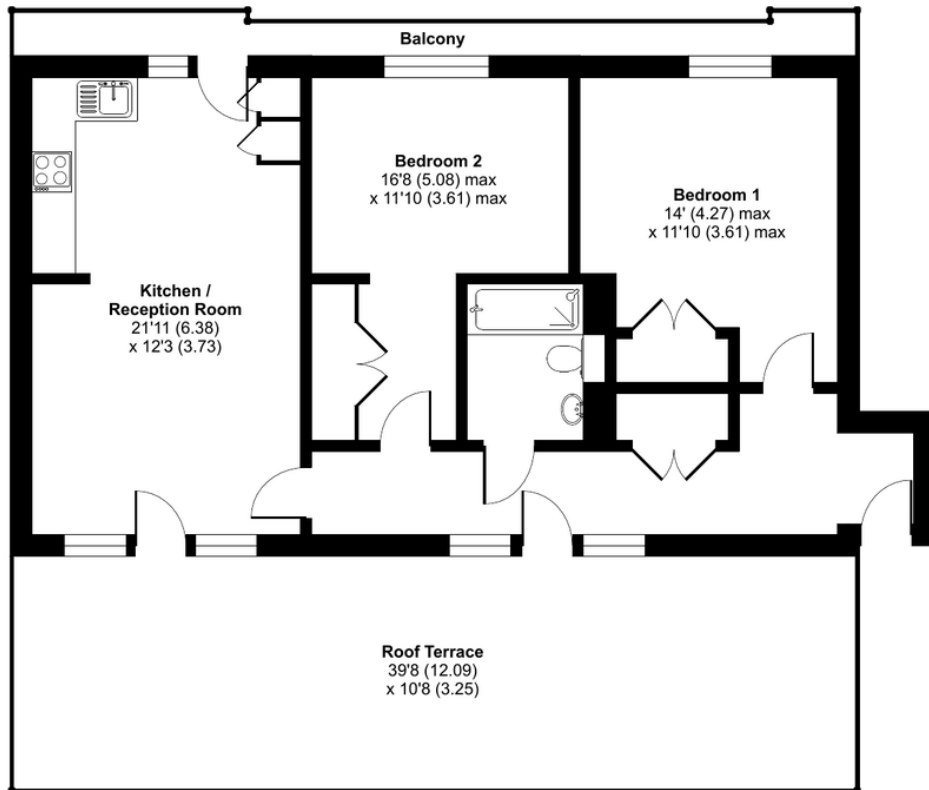




Kinver House, 42 Elthorne Road, London, N19

Approximate Area = 791 sq ft / 73.4 sq m

For identification only - Not to scale



FOURTH FLOOR

DAVID ANDREW

your most valuable asset

Archway Office

671 Holloway Road
London, N19 5SE

T (0)20 7619 3750

Highbury Office

90 Highbury Park
London N5 2XE

T (0)20 7354 9111

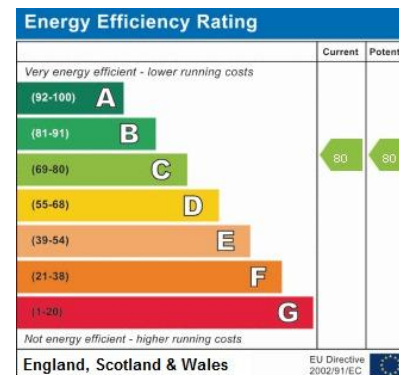
Stroud Green Office

167 Stroud Green Road
London N4 3PZ

T (0)20 7281 2000

General Contact

E info@davidandrew.co.uk



Agent's Note:

Whilst care has been exercised in the preparation of these sales particulars, statements about the property must not be relied upon as representations of statements or fact. Prospective purchasers must make and rely upon their own enquiries and those of professional representatives. The company accept not liability for any error contained in these particulars.



Floor plan produced in accordance with RICS Property Measurement Standards incorporating International Property Measurement Standards (IPMS2 Residential). © nchecom 2024. Produced for David Andrew. REF: 1124234

