



Calverley Grove, N19 3LQ

£1,100,000  
Freehold





# Calverley Grove

£1,100,000

Freehold

On the sales market for the first time in almost twenty years is this impressive family home offering almost 1,300 square feet of living space. This delightful property is arranged over three floors and comprises four bedrooms, family bathroom, en suite shower room, large open plan reception, fully-fitted kitchen and a mature 62-foot rear garden.

The house further benefits from a wealth of retained period features, and is offered for sale in good decorative order. The local shops, cafes, bars and Archway underground station (Northern Line) are less than a 10 minute stroll away.

- 1,298 sqft / 120.6 sqm
- Wonderful Garden
- Family bathroom
- En suite shower room
- 4 bedrooms
- Modern kitchen
- Large reception / dining room
- Period features







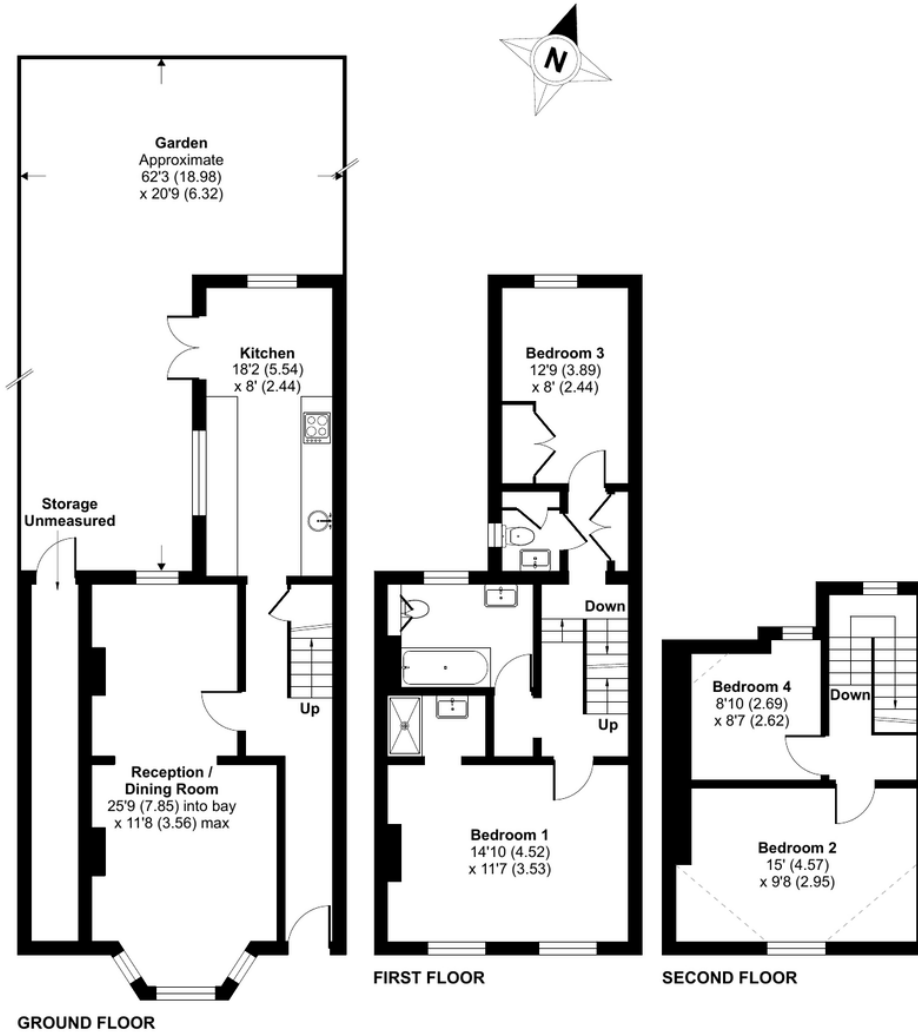
Denotes restricted head height

## Calverley Grove, London, N19

Approximate Area = 1268 sq ft / 117.8 sq m (excludes storage)  
 Limited Use Area(s) = 30 sq ft / 2.8 sq m  
 Total = 1298 sq ft / 120.6 sq m  
 For identification only - Not to scale

# DAVID ANDREW

your most valuable asset



Archway Office

671 Holloway Road  
 London, N19 5SE

T (0)20 7619 3750

Highbury Office

90 Highbury Park  
 London N5 2XE

T (0)20 7354 9111

Stroud Green Office

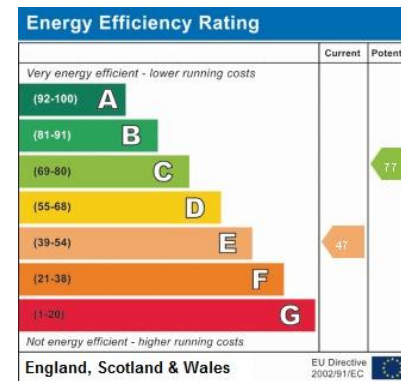
167 Stroud Green Road  
 London N4 3PZ

T (0)20 7281 2000

General Contact

E [info@davidandrew.co.uk](mailto:info@davidandrew.co.uk)

W [www.davidandrew.co.uk](http://www.davidandrew.co.uk)



### Agent's Note:

Whilst Care has been exercised in the preparation of these sales particulars, statements about the property must not be relied upon as representations of statements or fact. Prospective purchasers must make and rely upon their own enquiries and those of professional representatives. The company accept not liability for any error contained in these particulars.



Floor plan produced in accordance with RICS Property Measurement Standards incorporating International Property Measurement Standards (IPMS2 Residential). © nrhcom 2024. Produced for David Andrew. REF: 1119744

