



Miranda Road, N19 3RA

£775,000
Leasehold



Miranda Road

£775,000

Leasehold

Nestled in the Whitehall Park conservation area, this end-of-terrace period flat boasts more than 1,000 sq ft of living space and is enhanced by a substantial south-west facing garden, which is shared with only one other flat. The property features four bedrooms, a modern bathroom with a separate toilet, a living room, and a separate eat-in kitchen.

Miranda Road is a quiet tree-lined street that's conveniently located within walking distance of Archway underground station (Northern Line), Upper Holloway station (overground) and the open spaces of Whittington Park, Waterlow Park and Parliament Hill. You can also find the wealth of local shops, bars, and restaurants that Archway, Highgate Village and Crouch End have to offer.

- 1010 sq ft / 93.8 sm
- 4 bedrooms
- Large shared garden
- Period features
- EPC rating C
- Whitehall Park conservation area
- Quiet tree-lined road
- Excellent transport links





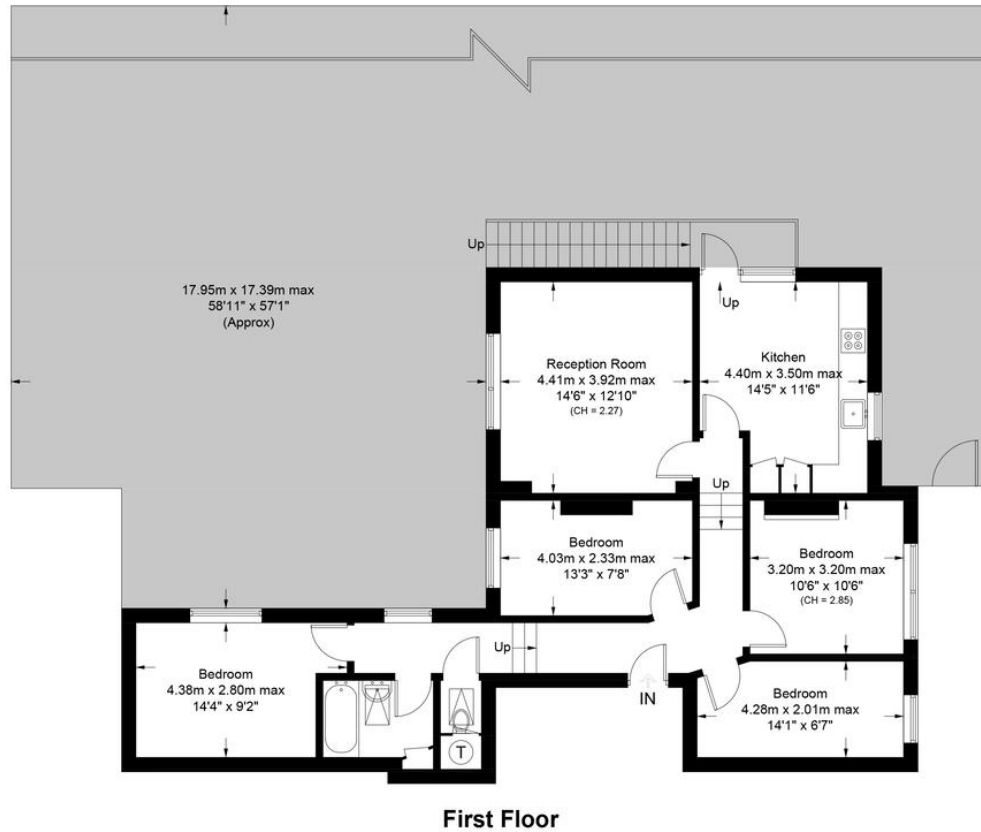


Miranda Road, N19

Approximate Gross Internal Area = 1010 sq ft / 93.8 sq m

DAVID ANDREW

your most valuable asset



Energy Efficiency Rating		Current	Potential
Very energy efficient - lower running costs			
(92-100)	A		
(81-91)	B		
(69-80)	C		
(55-68)	D		
(39-54)	E		
(21-38)	F		
(1-20)	G		
Not energy efficient - higher running costs			
		74	83
England, Scotland & Wales		EU Directive 2002/91/EC	

Archway Office

671 Holloway Road
London, N19 5SE

T (0)20 7619 3750

Highbury Office

90 Highbury Park
London N5 2XE

T (0)20 7354 9111

Stroud Green Office

167 Stroud Green Road
London N4 3PZ

T (0)20 7281 2000

General Contact

E info@davidandrew.co.uk



Certified Property Measurer

This plan is for layout guidance only. Not drawn to scale unless stated. Windows and door openings are approximate. Whilst every care is taken in the preparation of this plan, please check all dimensions, shapes and compass bearings before making any decisions reliant upon them. (ID1050252)

DAVID ANDREW | your most valuable asset

Agent's Note:

Whilst Care has been exercised in the preparation of these sales particulars, statements about the property must not be relied upon as representations of statements or fact. Prospective purchasers must make and rely upon their own enquiries and those of professional representatives. The company accept not liability for any error contained in these particulars.