



OAKFIELD



Pembury Grove, Bexhill-On-Sea TN39 4BX

Asking Price £375,000



3



1



1



E

Pembury Grove, Bexhill-On-Sea TN39 4BX

Pembury Grove presents a charming home in Bexhill, boasting a spacious three-bedroom detached bungalow. Surrounded by lush greenery, its wrap-around garden offers a serene retreat.

Step inside to discover a cozy living room perfect for relaxation, complemented by a separate porch for a touch of elegance. With its own driveway, parking is never a hassle.

Adding to its appeal, a newly fitted boiler ensures comfort and efficiency year-round. Welcome to your ideal retreat in the heart of Bexhill.





Kitchen

9'7 x 8'1 (2.92m x 2.46m)

Living Room

14'2 x 12'11 (4.32m x 3.94m)

Bathroom

7'3 x 5'0 (2.21m x 1.52m)

Bedroom 1

11'1 x 10'11 (3.38m x 3.33m)

Bedroom 2

13'3 x 12'5 (4.04m x 3.78m)

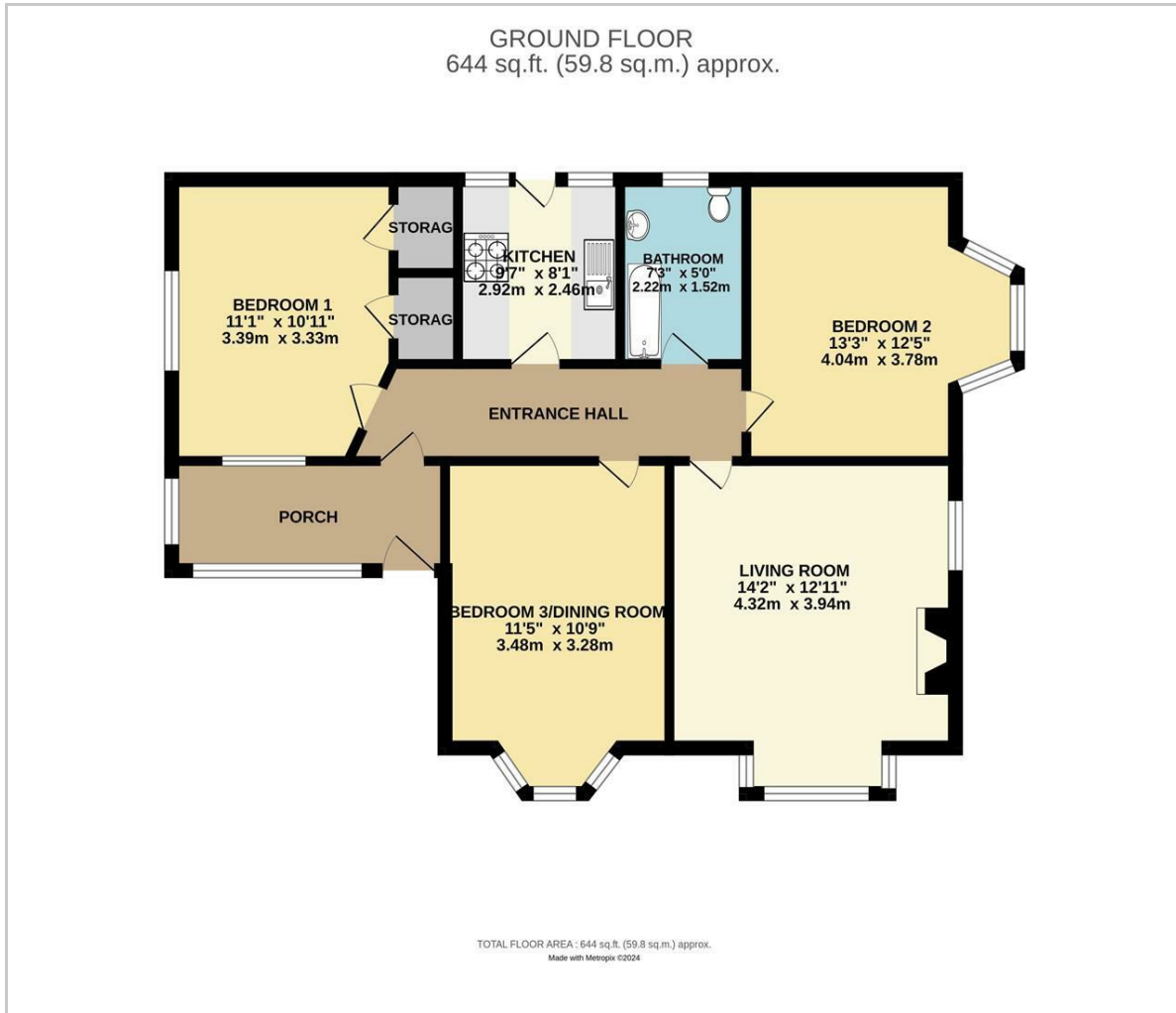
Bedroom 3/Dining Room

11'5 x 10'9 (3.48m x 3.28m)

Council Tax Band - D £2439



Floor Plan

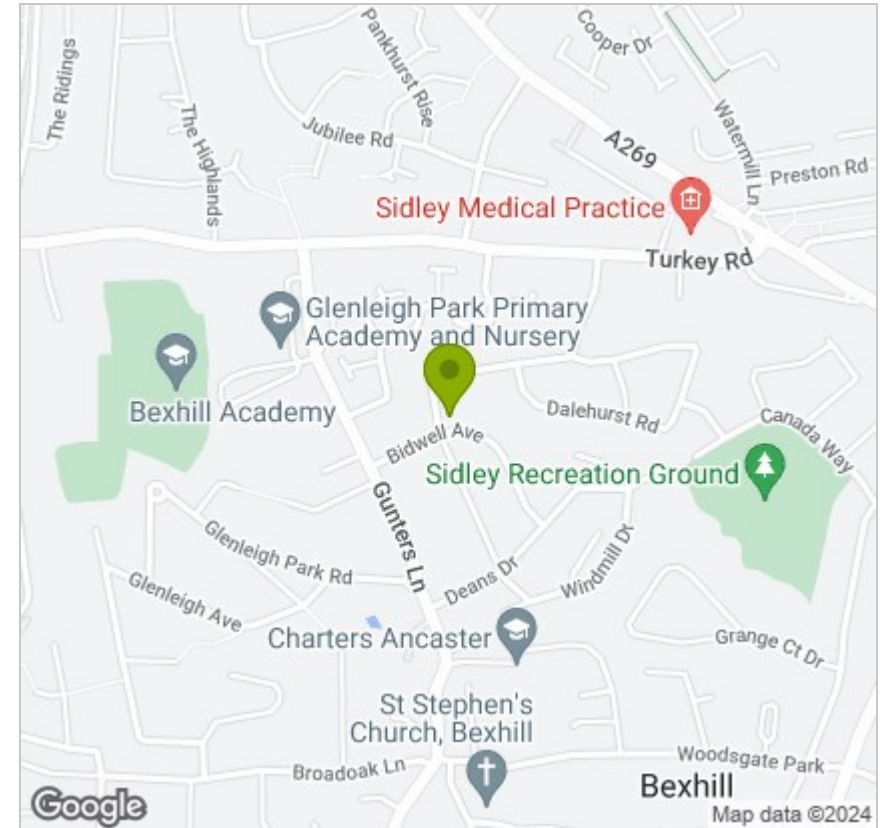


Viewing

Please contact us on 01424 224700 if you wish to arrange a viewing appointment for this property or require further information.

These particulars, whilst believed to be accurate are set out as a general outline only for guidance and do not constitute any part of an offer or contract. Intending purchasers should not rely on them as statements of representation of fact, but must satisfy themselves by inspection or otherwise as to their accuracy. No person in this firm's employment has the authority to make or give any representation or warranty in respect of the property.

Area Map



Energy Efficiency Graph

