



OAKFIELD



Birkdale, Bexhill-On-Sea, TN39 3TT

£1,100 Per Calendar Month



Birkdale, Bexhill-On-Sea, TN39 3TT

This spacious two bedroom top floor apartment is perfectly situated a short distance away from Little Common Village with easy access to local shops.

The property comprises a good sized living/dining room with access to a enclosed terrace area, two double bedrooms, one benefitting from fitted wardrobes, bathroom with shower over bath, separate WC, and modern fitted kitchen.

Further benefits to the property include gas central heating and first come first serve parking available.

Please note:

An annual household income of £33,000 will be required for the affordability criteria of this property.

The minimum tenancy length is 12 months.





Dining Room

10'10 x 9'5 (3.30m x 2.87m)

Sitting Room

14'1 x 12'11 (4.29m x 3.94m)

Kitchen

12'9 x 10'2 (3.89m x 3.10m)

Bathroom

5'10 x 5'9 (1.78m x 1.75m)

Bedroom 1

12'1 x 12 (3.68m x 3.66m)

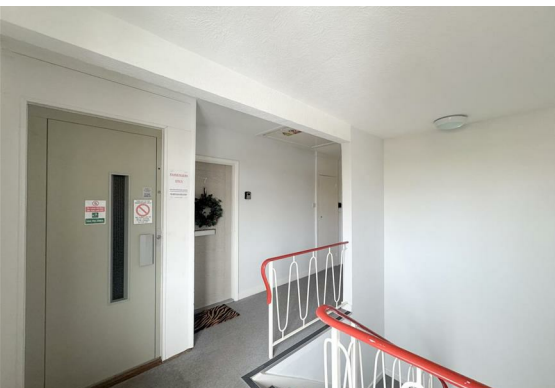
Bedroom 2

12'1 x 11'11 (3.68m x 3.63m)

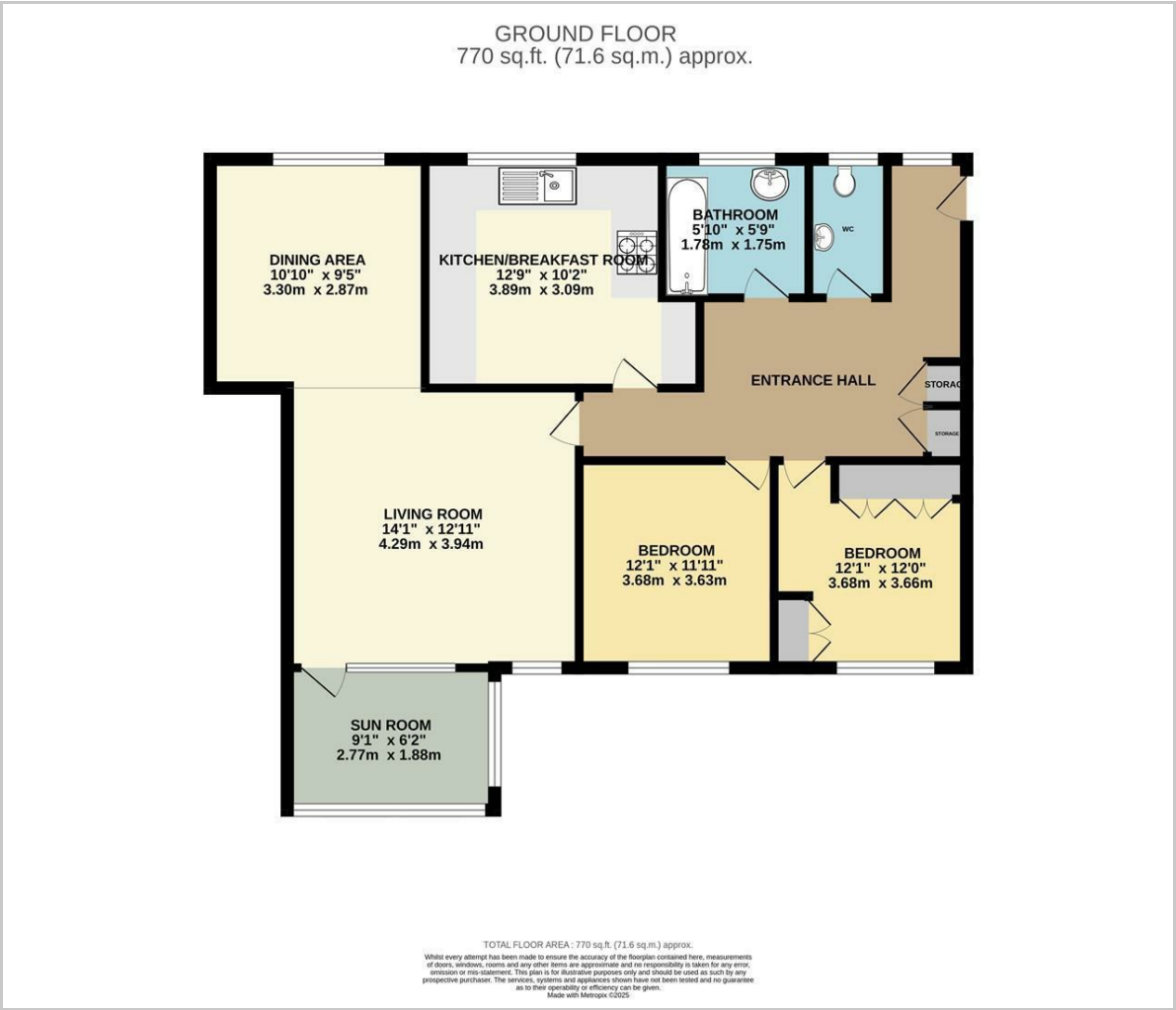
Sunroom

9'1 x 6'2 (2.77m x 1.88m)

Council Tax Band - C - £2277



Floor Plan

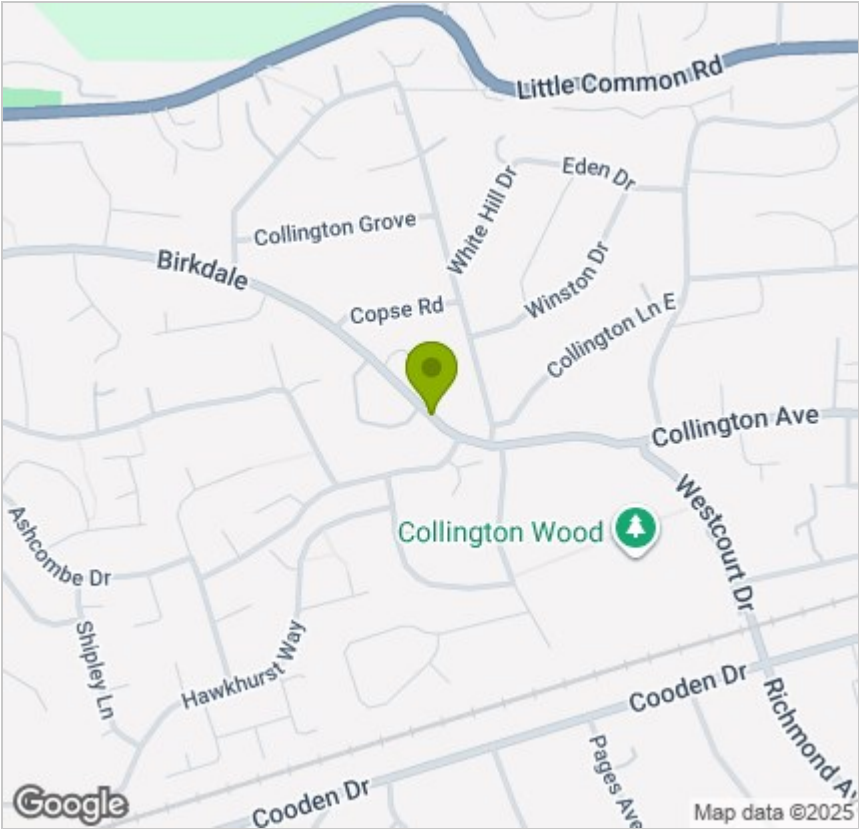


Viewing

Please contact us on 01424 817075 if you wish to arrange a viewing appointment for this property or require further information.

These particulars, whilst believed to be accurate are set out as a general outline only for guidance and do not constitute any part of an offer or contract. Intending purchasers should not rely on them as statements of representation of fact, but must satisfy themselves by inspection or otherwise as to their accuracy. No person in this firms employment has the authority to make or give any representation or warranty in respect of the property.

Area Map



Energy Efficiency Graph

