



OAKFIELD



The Landmark, Bexhill On Sea, TN39 3HH

£1,050 Per Calendar Month





## The Landmark, Bexhill On Sea, TN39 3HH

\*\*\*Zero Deposit available\*\*\*

This modern spacious fifth floor apartment is located ideally in the Town Centre of Bexhill, and boasts from being within walking distance to the seafront, the De La Warr Pavilion, the Train Station and all local amenities. The property also benefits from having sea views from both of its south facing balconies.

The property comprises a spacious open plan kitchen/living room with double doors leading to a south facing balcony and a fully fitted kitchen with matching wall and base units and integrated oven and hob, fridge freezer, and dishwasher. A double bedroom with double doors leading to a south facing balcony, a further bedroom with fitted wardrobes and an en-suite shower room, and another bathroom with full sized bath.

The building benefits from having a secure entry video phone system, underground parking with one allocated space, and is fully double glazed.

Please Note:

An annual household income of £31,500 will be required for the affordability criteria of this property.

The minimum tenancy length is 12 months.

There vacant photos advertised are from before the existing tenancy.







**Kitchen/ Living Area**  
21'11" x 18'8" (6.7 x 5.7)

**Bedroom One**  
11'5" x 11'1" (3.5 x 3.4)

**Bedroom Two**  
15'8" x 8'2" (4.8 x 2.5)

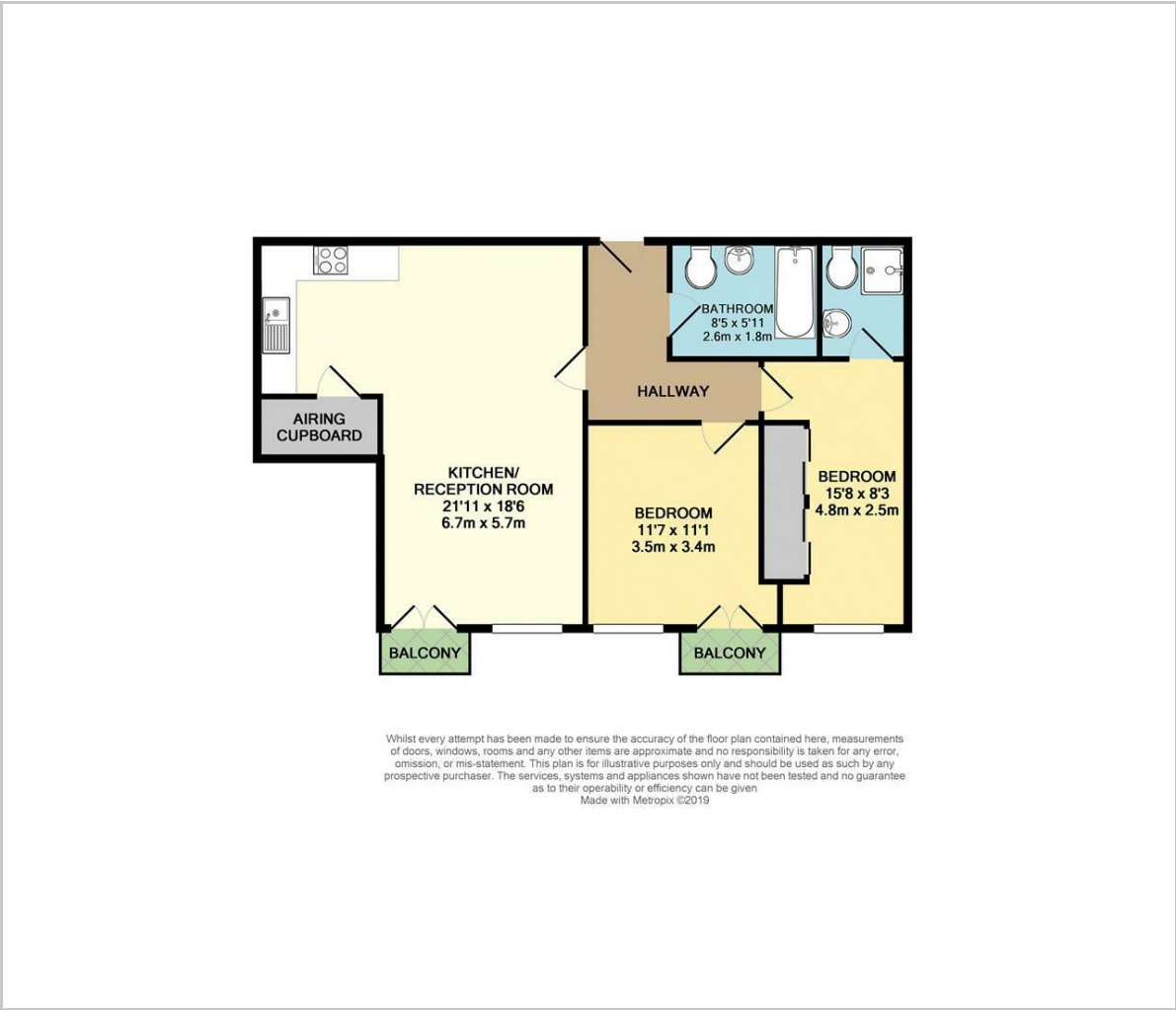
**Ensuite**  
5'3" x 6'5" (1.61 x 1.97)

**Bathroom**  
8'6" x 5'10" (2.6 x 1.8)

**Council Tax Band D - £2561 per year**



Floor Plan

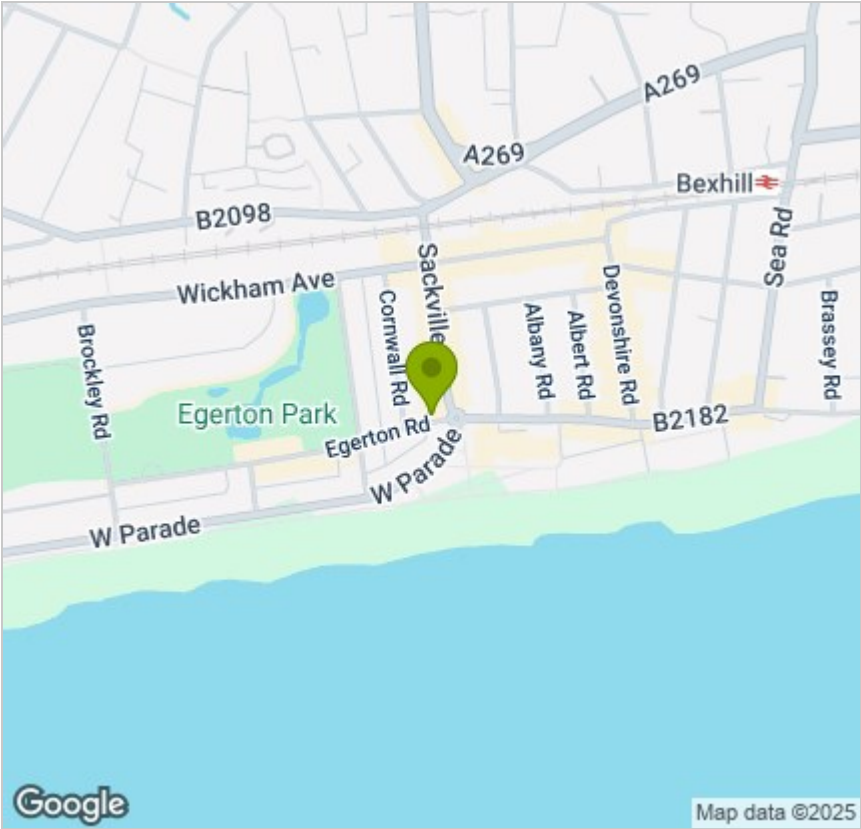


Viewing

Please contact us on 01424 817075 if you wish to arrange a viewing appointment for this property or require further information.

These particulars, whilst believed to be accurate are set out as a general outline only for guidance and do not constitute any part of an offer or contract. Intending purchasers should not rely on them as statements of representation of fact, but must satisfy themselves by inspection or otherwise as to their accuracy. No person in this firms employment has the authority to make or give any representation or warranty in respect of the property.

Area Map



Energy Efficiency Graph

