



OAKFIELD

Springfield Road, Bexhill-On-Sea TN40 2BX

Offers Around £315,000



Springfield Road, Bexhill-On-Sea TN40 2BX

This charming two bedroom end of terrace house on Springfield Road offers a perfect blend of comfort and style.

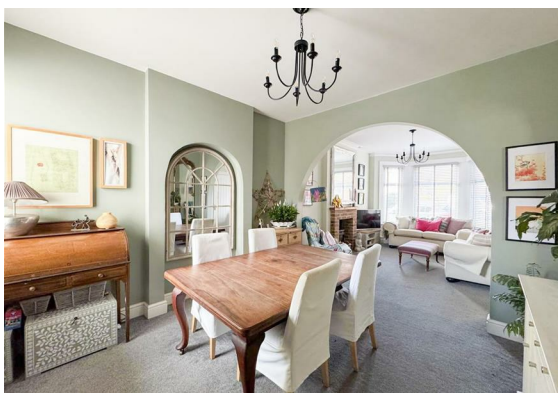
Immaculately presented throughout, the property boasts a spacious lounge featuring a cozy wood burner, ideal for relaxing evenings.

The large dining room provides ample space for entertaining, seamlessly connecting to the rest of the home.

Upstairs, the property benefits from two generously sized bedrooms with fitted wardrobes in the main bedroom. A separate toilet, adding convenience to its practical layout.

Externally, the house includes a garage, offering secure storage or parking, and a well-maintained garden space to the rear.

With its tasteful decor and thoughtful features, this home is ready for its new owners to move in and enjoy. Located in a desirable area, it's an excellent choice for first-time buyers or those looking to upsize.





Lounge

14'2 x 11'1 (4.32m x 3.38m)

Dining Room

11'1 x 11'5 (3.38m x 3.48m)

Kitchen

13'0 x 8'10 (3.96m x 2.69m)

Bedroom 1

15'1 x 14'4 (4.60m x 4.37m)

Bedroom 2

12'0 x 9'9 (3.66m x 2.97m)

Council Tax Band - B £1,897 per annum



Floor Plan

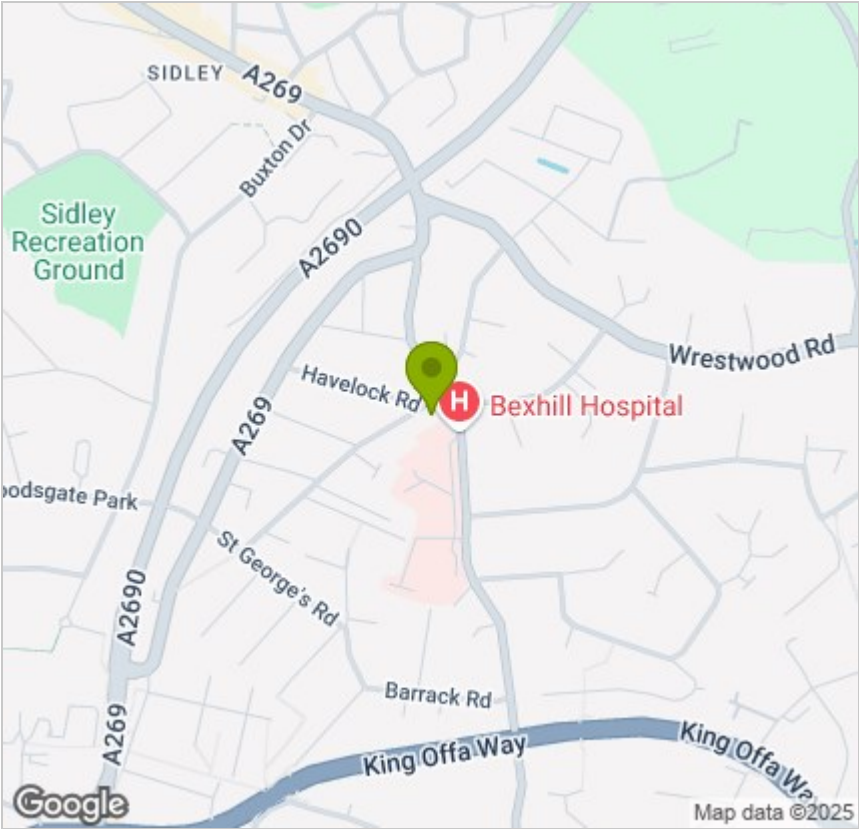


Viewing

Please contact us on 01424 224700 if you wish to arrange a viewing appointment for this property or require further information.

These particulars, whilst believed to be accurate are set out as a general outline only for guidance and do not constitute any part of an offer or contract. Intending purchasers should not rely on them as statements of representation of fact, but must satisfy themselves by inspection or otherwise as to their accuracy. No person in this firms employment has the authority to make or give any representation or warranty in respect of the property.

Area Map



Energy Efficiency Graph

