



OAKFIELD



Upper Sea Road, Bexhill-On-Sea TN40 1FL

Asking Price £170,000





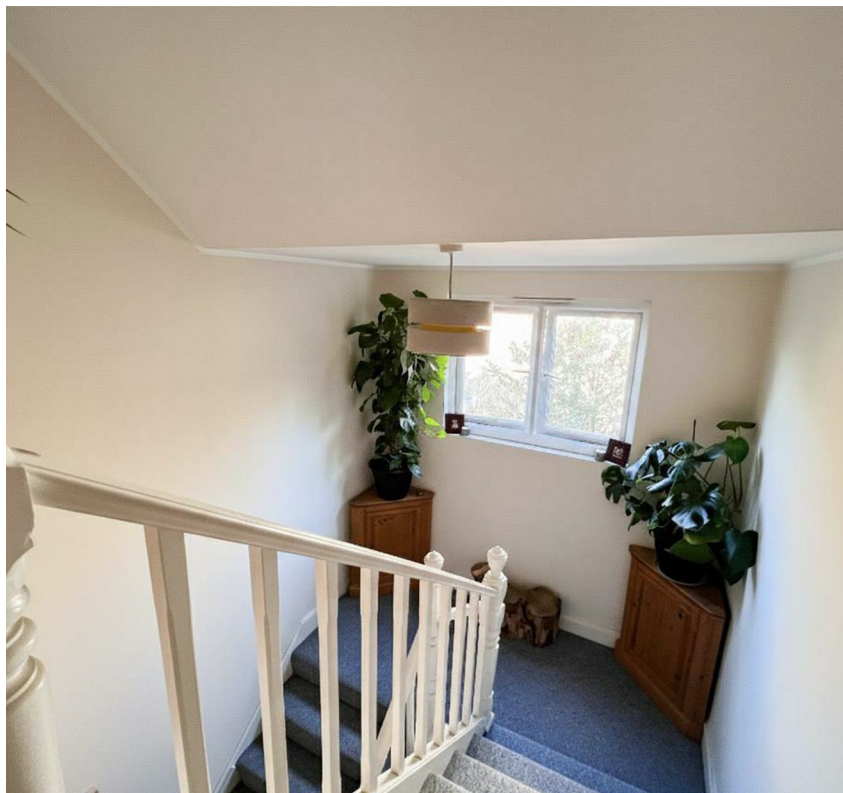
## Upper Sea Road, Bexhill-On-Sea TN40 1FL

Bright and airy one-bedroom top floor flat on Upper Sea Road with stunning views over Bexhill and towards the seafront.

This charming flat features a spacious lounge, separate kitchen, and a well-sized bedroom, offering a comfortable living space.

Located within easy walking distance of Bexhill train station and the town centre, it provides convenient access to local shops, cafes, and transport links.

Ideal for those looking to enjoy coastal living with the added convenience of town amenities nearby.







### Kitchen

9'8 x 7'9 (2.95m x 2.36m)

### Living Room

16'7 x 13'6 (5.05m x 4.11m)

### Bedroom

13'8 x 11'2 (4.17m x 3.40m)

### Bathroom

8'5 x 5'2 (2.57m x 1.57m)

**Council Tax Band - B £1,886.47**

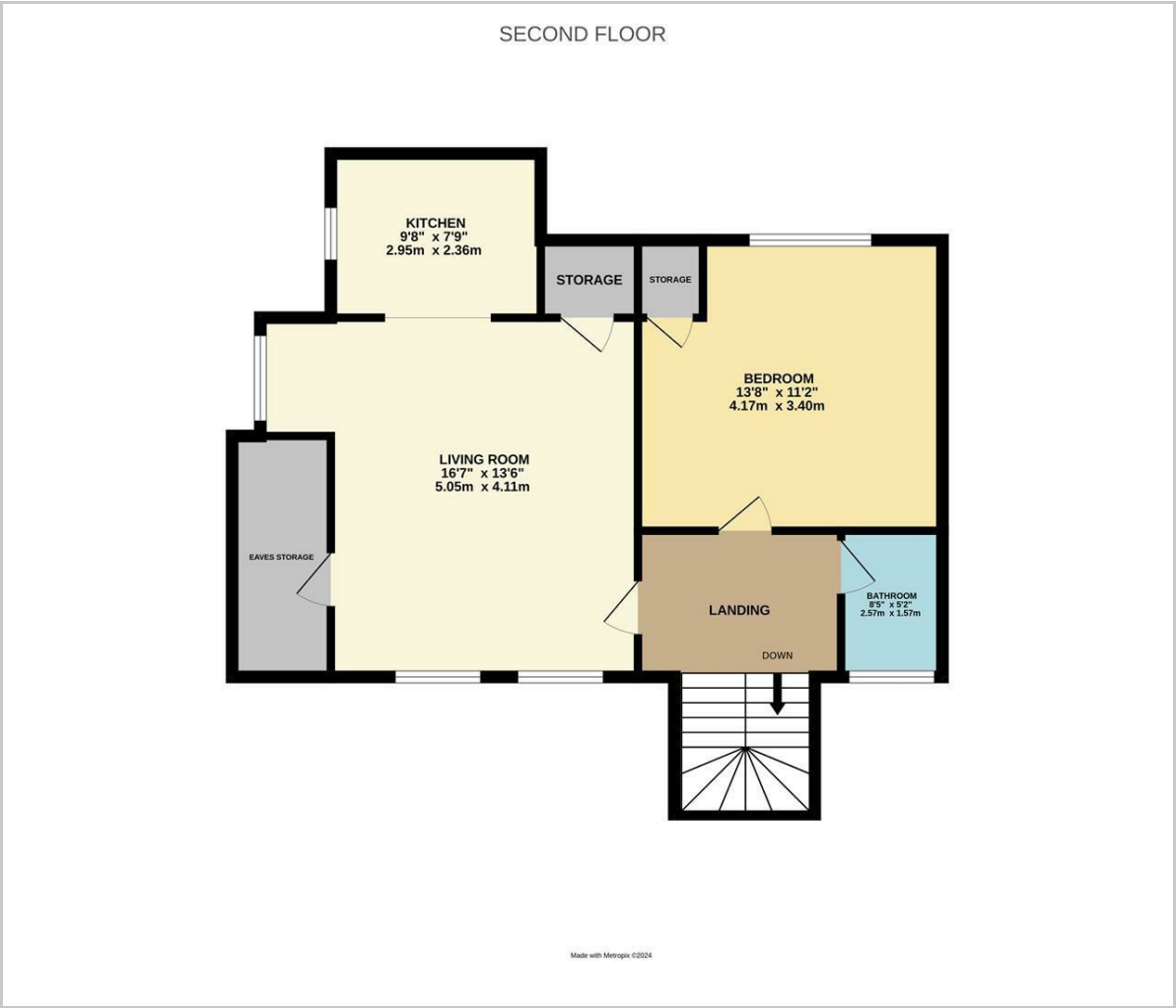
### Lease Information

The seller advises that the property is offered as leasehold and has approximately 118 years remaining on the lease. The service charge is approximately £250 per annum with a ground rent of £250 per annum. The insurance is £230 per annum. The agent has not had sight of confirmation documents and therefore the buyer is advised to obtain verification from their solicitors or surveyor.





Floor Plan

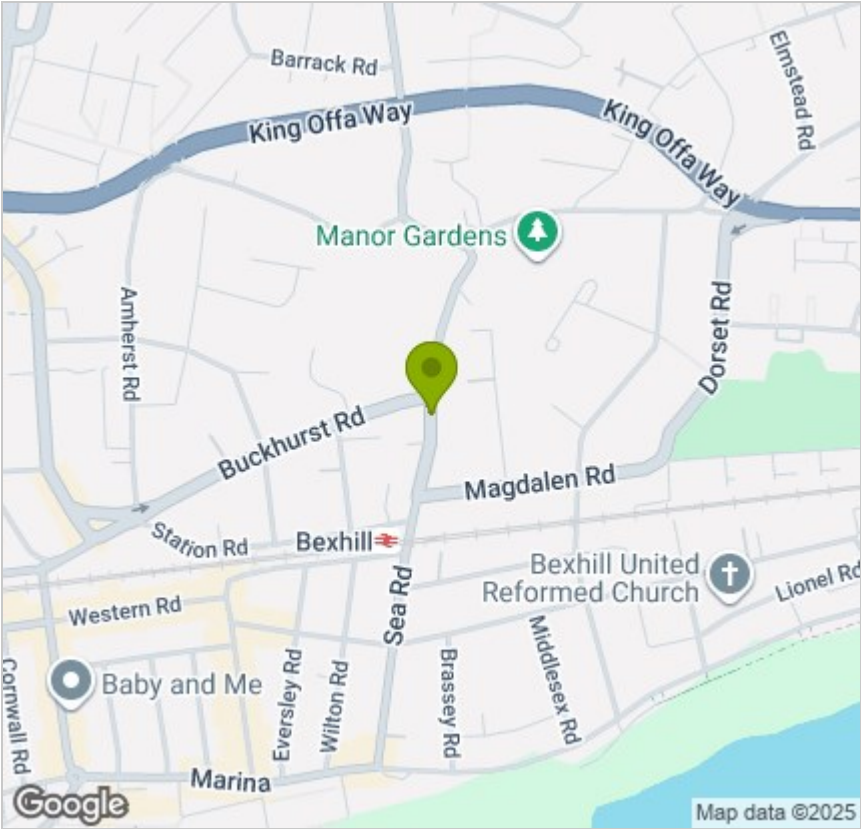


Viewing

Please contact us on 01424 224700 if you wish to arrange a viewing appointment for this property or require further information.

These particulars, whilst believed to be accurate are set out as a general outline only for guidance and do not constitute any part of an offer or contract. Intending purchasers should not rely on them as statements of representation of fact, but must satisfy themselves by inspection or otherwise as to their accuracy. No person in this firms employment has the authority to make or give any representation or warranty in respect of the property.

Area Map



Energy Efficiency Graph

