



OAKFIELD

Ninfield Road, Bexhill-On-Sea TN39 5BD

Guide Price £285,000



Ninfield Road, Bexhill-On-Sea TN39 5BD

This three-bedroom end of terrace coach house on Ninfield Road, Bexhill, offers spacious living across multiple levels.

The ground floor features a welcoming lounge that flows into a dining room, perfect for everyday living and entertaining.

The separate fitted kitchen provides plenty of room for meal preparation, while a convenient downstairs W/C adds practicality.

Upstairs, there are three double bedrooms, providing ample space for family or guests.

The converted loft area offers additional versatility, with potential to be transformed into two further bedrooms.

Outside, the property includes a courtyard garden with side access, ideal for low-maintenance outdoor enjoyment





Kitchen
12'2 x 6'11 (3.71m x 2.11m)

Living Room/Dining Room
18'1 x 17'1 (5.51m x 5.21m)

Bedroom 1
14'1 x 12'2 (4.29m x 3.71m)

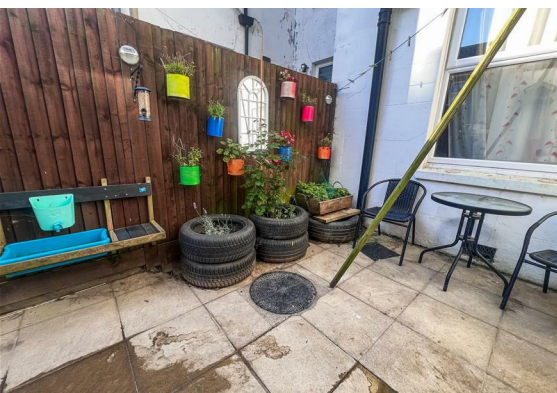
Bedroom 2
11'2 x 11'2 (3.40m x 3.40m)

Bedroom 3
11'2 x 7'3 (3.40m x 2.21m)

Bathroom
6'11 x 4'11 (2.11m x 1.50m)

WC
5'11 x 2'0 (1.80m x 0.61m)

Council Tax Band = B £1,897 per annum



Floor Plan

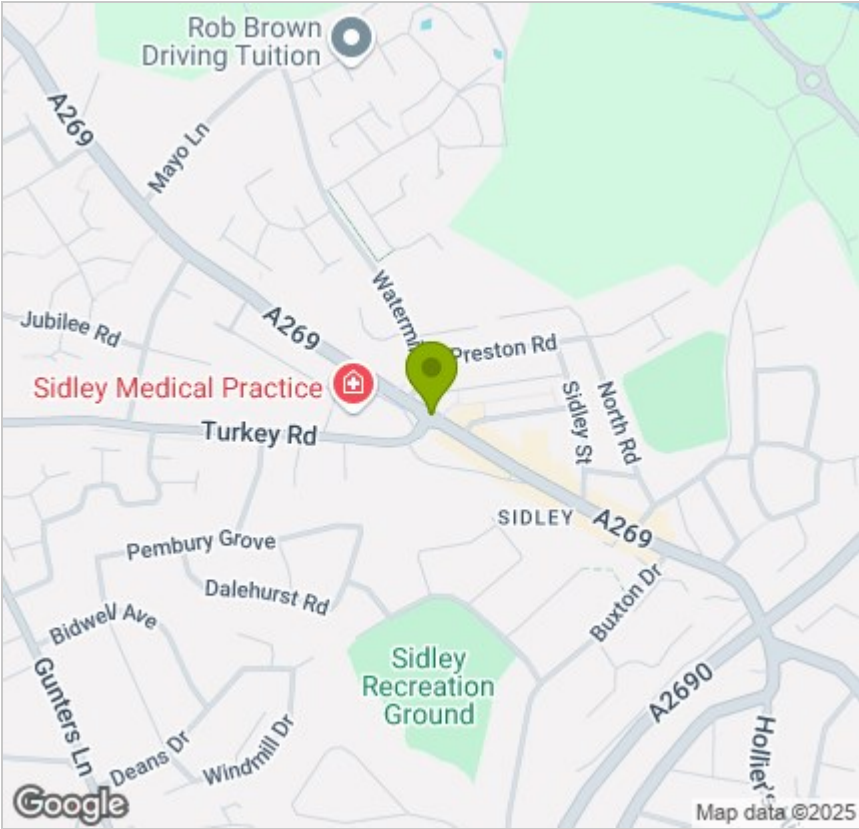


Viewing

Please contact us on 01424 224700 if you wish to arrange a viewing appointment for this property or require further information.

These particulars, whilst believed to be accurate are set out as a general outline only for guidance and do not constitute any part of an offer or contract. Intending purchasers should not rely on them as statements of representation of fact, but must satisfy themselves by inspection or otherwise as to their accuracy. No person in this firms employment has the authority to make or give any representation or warranty in respect of the property.

Area Map



Energy Efficiency Graph

