

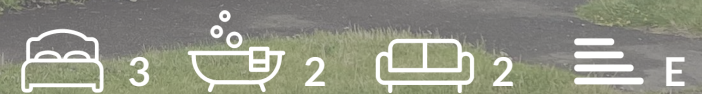


OAKFIELD



Warwick Road, Bexhill-On-Sea TN39 4HG

Asking Price £525,000



Warwick Road, Bexhill-On-Sea TN39 4HG

Welcome to this charming detached house located on Warwick Road in the picturesque town of Bexhill-On-Sea. This property boasts two spacious reception rooms, perfect for entertaining guests or simply relaxing with your family. With three cosy bedrooms, there is plenty of space for everyone to enjoy a good night's sleep.

The house features two modern bathrooms, ensuring convenience and comfort for all residents. Situated in a peaceful neighbourhood, this property offers a tranquil retreat from the hustle and bustle of everyday life.

One of the standout features of this house is the parking space available for two vehicles, providing ease and convenience for those with cars. Whether you're a growing family or someone who loves to host gatherings, this property offers the space and amenities to cater to your lifestyle needs.

Don't miss out on the opportunity to make this house your home. Contact us today to arrange a viewing and experience the charm and comfort that this property has to offer.





Living Room

15'4 max x 12'5 max (4.67m max x 3.78m max)

Kitchen

19'1 x 10'3 (5.82m x 3.12m)

Dining Room

11'5 x 10'9 (3.48m x 3.28m)

Bedroom 1

13'3 x 12'7 (4.04m x 3.84m)

Bedroom 2

11'8 x 10'6 (3.56m x 3.20m)

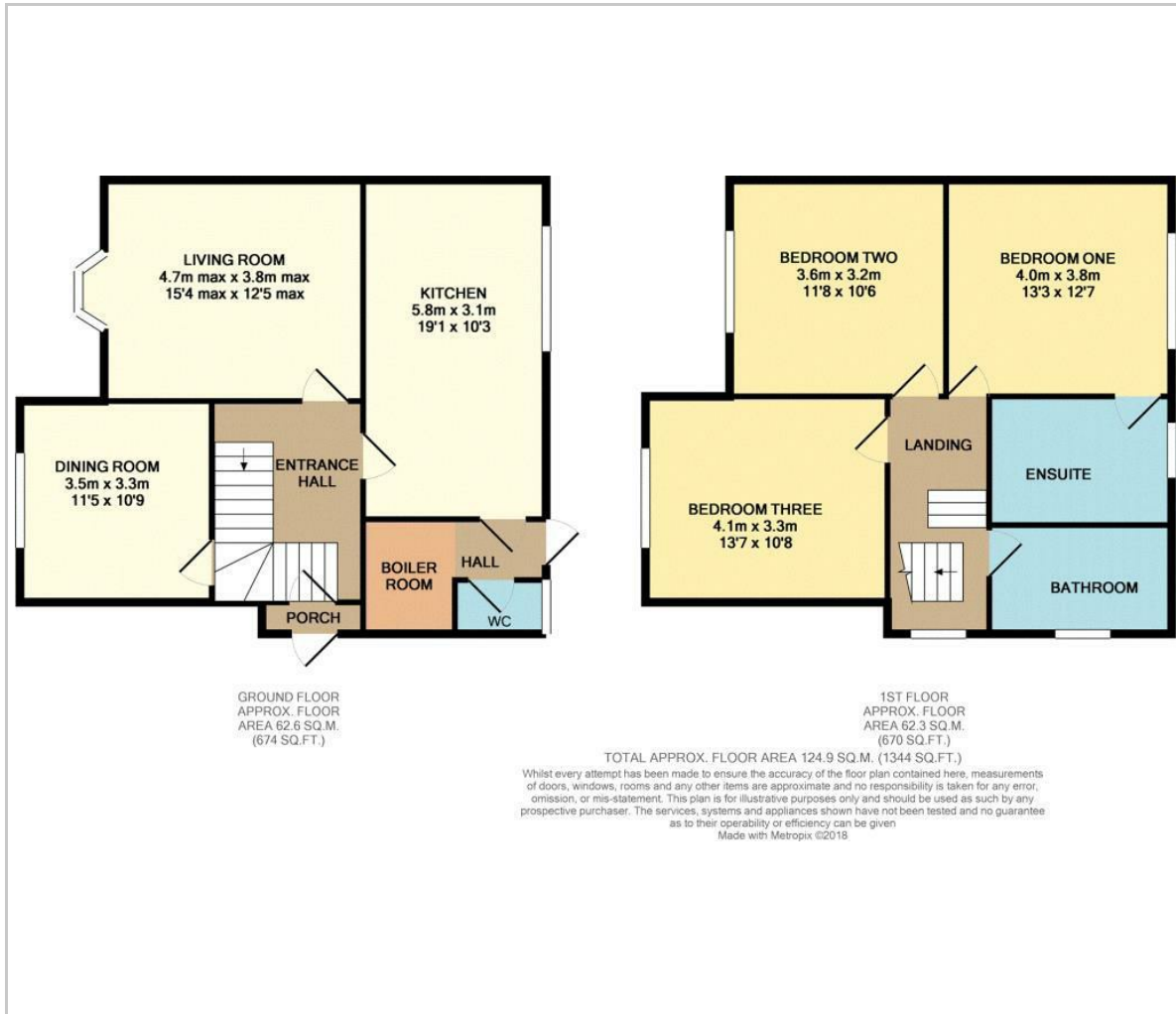
Bedroom 3

13'7 x 10'8 (4.14m x 3.25m)

Council Tax Band - E £2,982



Floor Plan



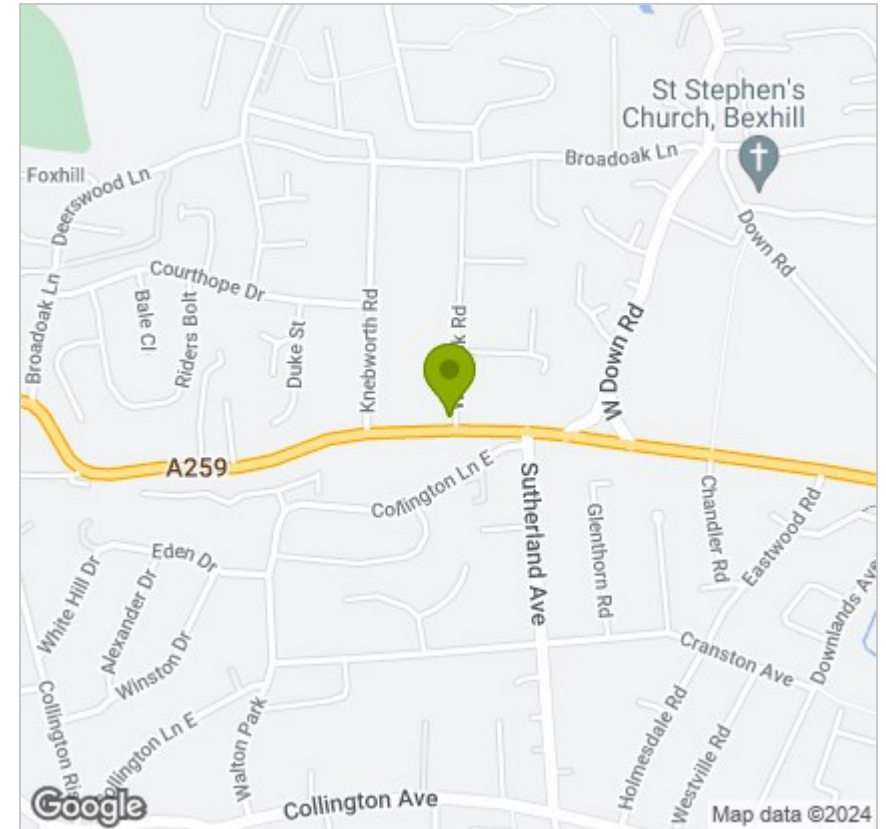
Viewing

Please contact us on 01424 224700 if you wish to arrange a viewing appointment for this property or require further information.

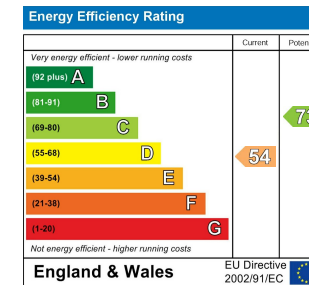
These particulars, whilst believed to be accurate are set out as a general outline only for guidance and do not constitute any part of an offer or contract. Intending purchasers should not rely on them as statements of representation of fact, but must satisfy themselves by inspection or otherwise as to their accuracy. No person in this firm's employment has the authority to make or give any representation or warranty in respect of the property.

12 Sackville Road, Bexhill on sea, East Sussex, TN39 3JL
Bexhill@oakfieldproperty.co.uk

Area Map



Energy Efficiency Graph



01424 224700
www.oakfieldproperty.co.uk