



OAKFIELD



The Mead, Bexhill-On-Sea

Asking Price £525,000





## The Mead, Bexhill-On-Sea

Deceptively spacious and recently refurbished two bedroom detached bungalow. This Larkin built bungalow has plenty to offer and is located in the sought after Collington area, within close proximity of amenities, doctor surgery and good local transport nearby.

Accommodation comprises of a living room with double aspect which makes the room bright and welcoming. There are two double bedrooms, which would be perfect for a small family or guests. The recently fitted bathroom with a shower over the bath, wash hand basin, WC and heated towel rail is modern and functional. It's also convenient that the kitchen has matching wall and base units along with integrated appliances. Accessing the garden from the kitchen is a nice touch, especially for those who enjoy outdoor spaces.

This corner plot property benefits from a front lawn and off road parking with a garage with an automated door. Private rear garden which is mostly laid of lawn and an area filled with shingle stones.

Viewing is highly recommended to see this properties full potential.







**Lounge**  
18'1 x 13'1 (5.51m x 3.99m)

**Kitchen**  
15'5 x 13'4 (4.70m x 4.06m)

**Bedroom 1**  
13'7 x 11'4 (4.14m x 3.45m)

**Bedroom 2**  
13'6 x 11'7 (4.11m x 3.53m)

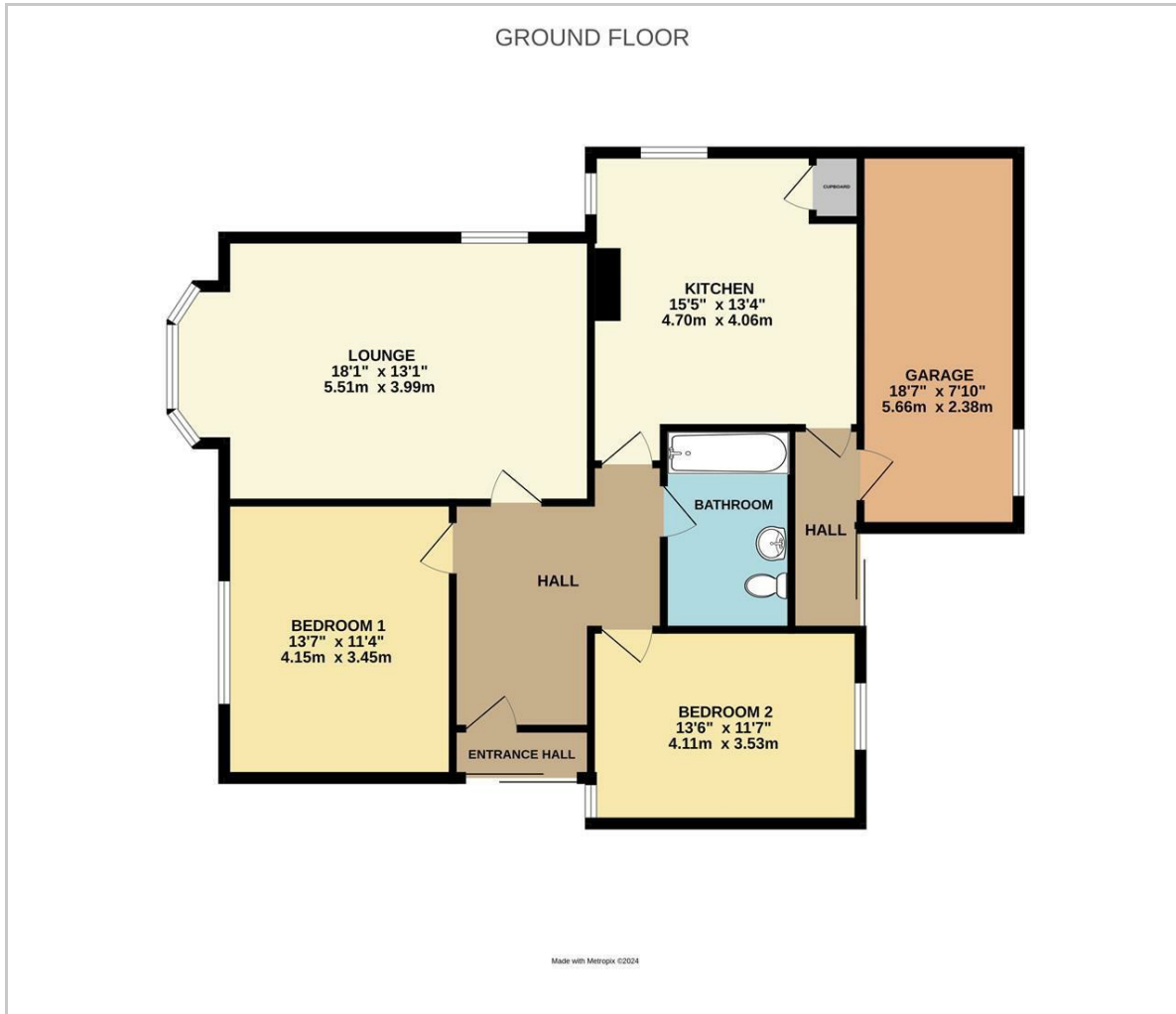
**Garage**  
18'7 x 7'10 (5.66m x 2.39m)

**Council Tax Band - E**





## Floor Plan

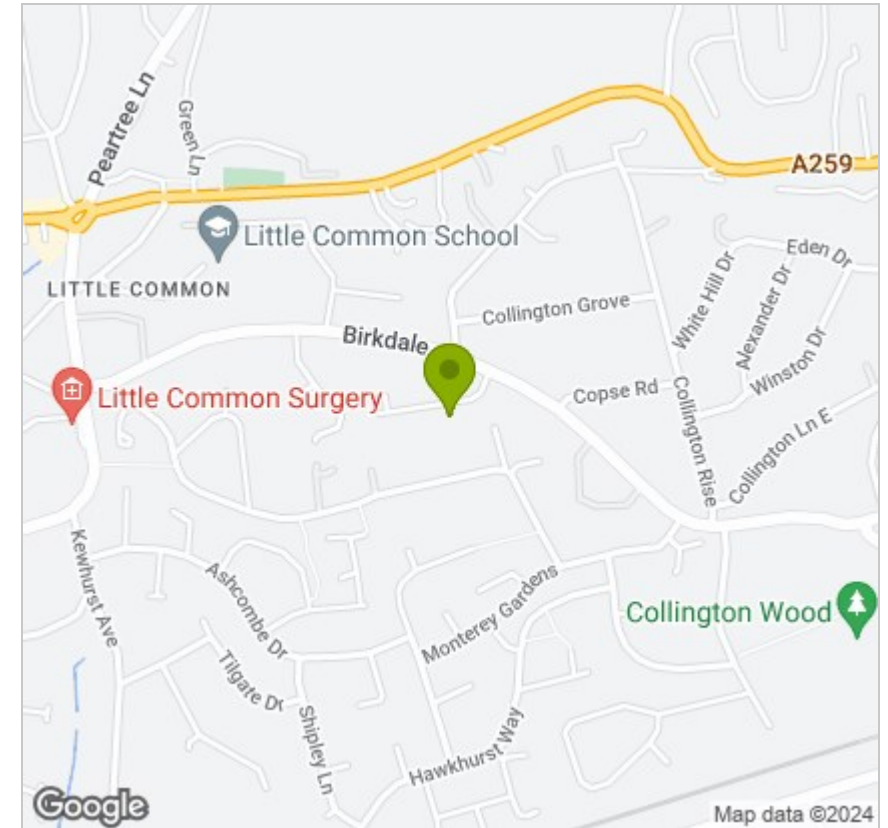


## Viewing

Please contact us on 01424 224700 if you wish to arrange a viewing appointment for this property or require further information.

These particulars, whilst believed to be accurate are set out as a general outline only for guidance and do not constitute any part of an offer or contract. Intending purchasers should not rely on them as statements of representation of fact, but must satisfy themselves by inspection or otherwise as to their accuracy. No person in this firm's employment has the authority to make or give any representation or warranty in respect of the property.

## Area Map



## Energy Efficiency Graph

