

## Russell Road, SW19

### £575,000

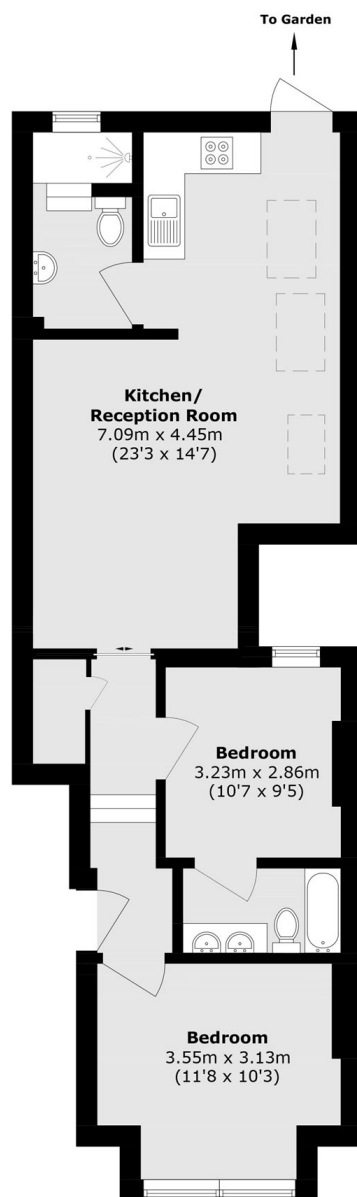
A phenomenal two double bedroom, two bathroom ground floor Victorian conversion. The property has its own entrance, a private decked garden, a share of freehold and no onward chain.

Russell Road is a quiet road with restricted traffic flow near to Wimbledon Broadway. Perfectly located for young families, being in close proximity to the superb Pelham, St Mary's & Merton Park Primary Schools. Wimbledon Village is also nearby.

### Features

- Two Double Bedrooms
- Two Bathrooms
- Decked Rear Garden
- Own Entrance
- Share Of Freehold
- No Onward Chain

# Russell Road, London, SW19



Total area (approx.): 58.0 sq. m (624.3 sq. ft)

## Dexters

Wimbledon  
12 The Broadway  
London  
SW19 1RF  
Sales  
020 8545 8580

Energy Rating: C. We aim to make our particulars both accurate and reliable. However they are not guaranteed; nor do they form part of an offer or contract. If you require clarification on any points then please contact us, especially if you're traveling some distance to view. Please note that appliances and heating systems have not been tested and therefore no warranties can be given as to their good working order.

 **RICS** | Regulated  
Estate Agent  
and Letting Agent

[dexters.co.uk](https://www.dexters.co.uk)