



Delamere Road, SW20

£1,900 Per calendar month

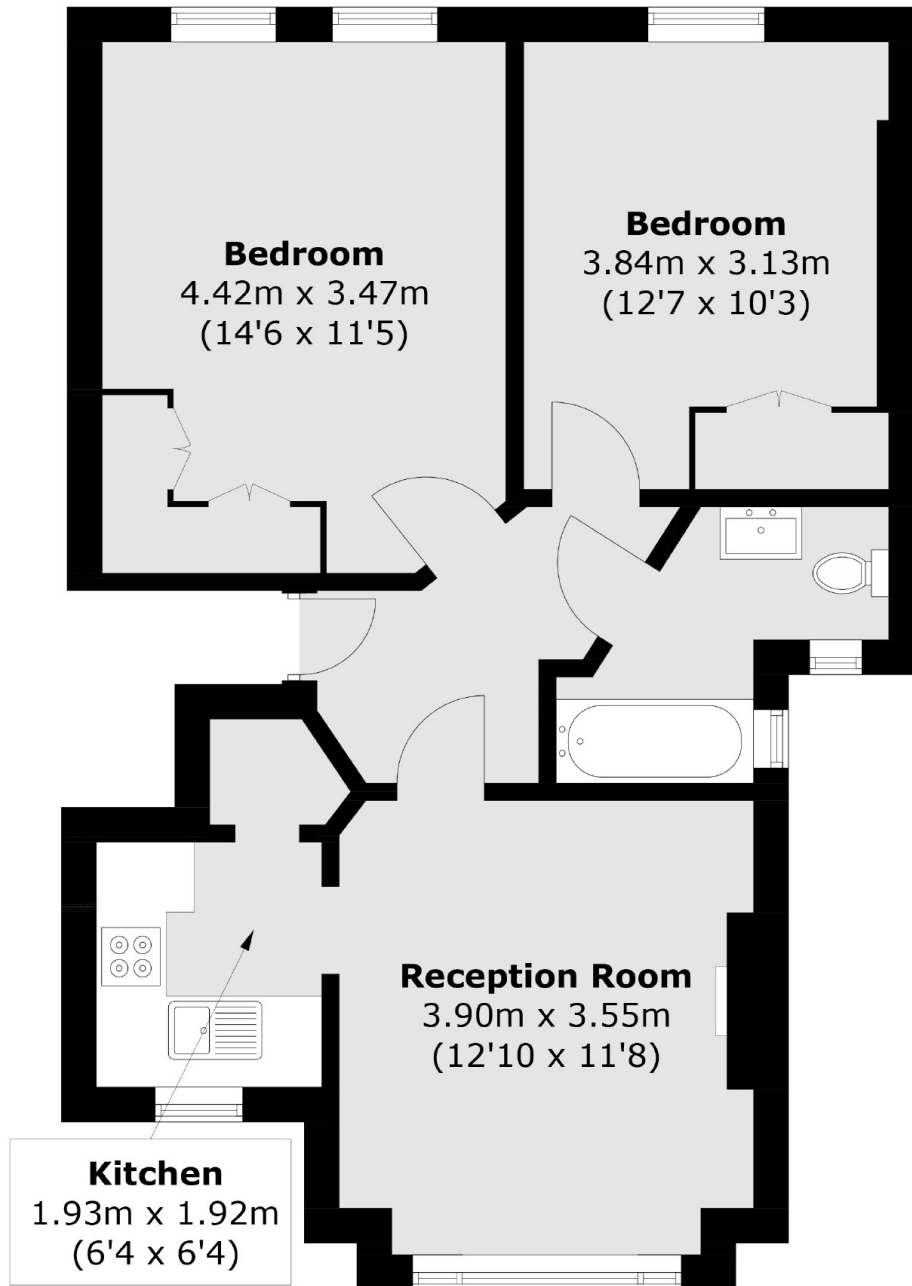
A first floor, two double bedroom, one bathroom apartment that has a separate large living room and kitchen as well as a modern bathroom with shower over bath.

Situated between Wimbledon and Raynes Park, the area has great transport links, shops, restaurants, theatres and a cinema. If you fancy a stroll up to Wimbledon Common or the Village there are some cracking pubs as well.

Features

Two Bedrooms
One Bathroom
First Floor
Quiet Road
Separate Kitchen
Modern Bathroom

Delamere Road, London, SW20



Total area (approx.): 57.7 sq. m (621.0 sq. ft)