



Somerset Road, SW19

£1,425,000

A five bedroom, two bathroom family home with off street parking and garage. Presented in great condition throughout, the property still retains the potential for further expansion on the ground floor.

Cedar Court is set in a prestigious development moments from the All England Tennis Club. Located close to Wimbledon Village, between the wilds of Wimbledon Common and the famous Wimbledon Tennis Grounds. The development is leafy and peaceful with amenities just a short walk away.

Features

- Five Bedrooms
- Two Bathrooms
- Private Garden
- Off Street Parking
- Garage
- Close to Wimbledon Village



Somerset Road, SW19

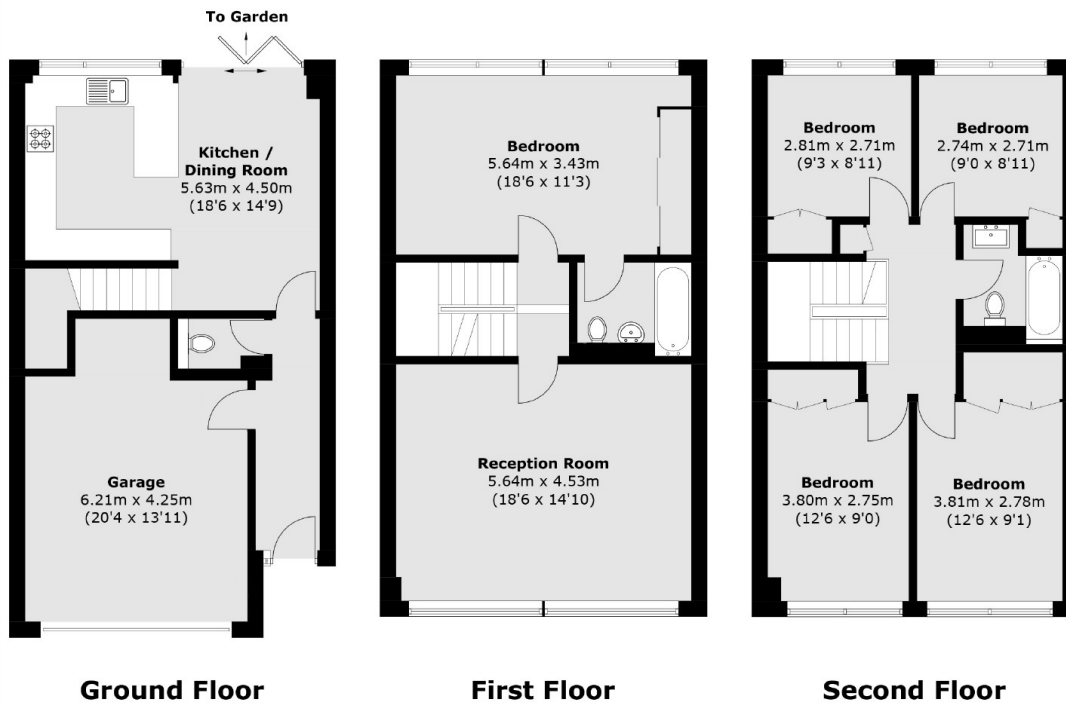
The ground floor has a large entrance hall with an integral double garage/utility room and downstairs cloakroom, leading through to an open plan kitchen/dining room with integrated appliances and sliding doors to the garden.

The first floor offers a generous reception room and bedroom with full width windows and en-suite bathroom. There are four further bedrooms and a second bathroom situated on the top floor.

To the rear of the property is a split-level rear garden which includes a large patio area. The front of the property provides driveway parking for two cars and there is additional residents' parking available.



Somerset Road, London, SW19



Total area (approx.): 169.1 sq. m (1820.2 sq. ft)
(Including Garage)